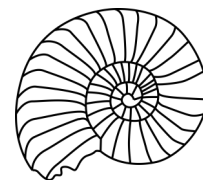


---

---

# KILVE NEWS



---

Issue 358

July 2022

---

## EDITORIAL

As you would expect, much of this month's issue covers the event-packed four days at the beginning of June, when we celebrated the Queen's Platinum Jubilee. There is a round-up from the organising committee, a full report of the Kilve CC v The Villagers cricket match, and what I hope is a representative selection of the photographs taken by Trevor Stanton at the various events. It was certainly difficult to choose which to include. I'm sure the souvenir brochure will contain even more details of it all, and we can look forward to receiving our copies in the near future.

Sadly this month the village lost Stan Eynott, who lived here for over twenty years, and was at one time involved in many village activities. A tribute from Robbie, who knew him well, is on p12.

Finally, two requests. Please continue to send me in articles, photographs and drawings for inclusion in Kilve News. This is your newsletter, and I would like it to reflect life in the village. And secondly, can anybody tell me why bindweed grows so fast?

Jenny

**Contact the Editor on 01278 741663**

**e-mail [jakent@btinternet.com](mailto:jakent@btinternet.com)**

**or text on 07745 805006**

## CONGRATULATIONS



Many congratulations to Phyllis Lemon who was 99 on 8 June. A group of villagers gathered outside her sitting-room and sang *Happy Birthday* to her, with Bruce and Alison Eyley providing the music on trumpet and trombone. Fresh from her Easter Bake Off victory, Pat Woolley made the cake. Phyllis didn't want her photograph published, but you can all admire the cake!

And belated birthday wishes and congratulations to Norman Pinn, who celebrated his 90th birthday at the end of May. There must be something in the Kilve air.



## ISN'T SHE BEAUTIFUL!

There were a lot of very ingenious and amusing entries in the scarecrow competition (funny how many of them were carrying bottles) but the winner was Sally Quinn of Hilltop Lane, with this amazing figure. I cannot imagine how long it took Sally to design and make her, but she is really lovely.

## INTERNATIONAL CRICKET COMES TO KILVE

Have you been following the England men's tour to the Netherlands? In the first ODI match England broke the world record by scoring 498 in their 50 overs — amazing cricket! And on 17 July, Kilve CC are hosting VRA Amsterdam CC, the Dutch club on whose ground the England matches were played. Shall we see similar scores then? Why not go down to the Beach Ground and find out? Spectators are always welcome.



# HOW KILVE CELEBRATED THE PLATINUM JUBILEE

## TOGETHERNESS!

June 2nd, and like many villages and towns throughout the country, Kilve enjoyed four days of fun-filled activities to celebrate the Queen's Platinum Jubilee. From spectacular scarecrows to the Big Lunch attended by some 140 people in the outdoor centre (courtesy of Kilve Court), it was four days of great fun and a real sense of belonging to the community.

A huge, huge thank you to everyone who made it possible: our sponsors, raffle prize donors, village organisations and individuals who gave of their time, money, and skills.

Cameras, mobile phones and the like snapped at every possible moment and we are pleased to inform you all that we are in the process of making a souvenir brochure of the occasion, a copy of which will be delivered to every household in the village, hopefully, in the not too distant future.

We are also pleased to report that because of everyone's generosity we managed to balance the books, with just a little to spare and it is our intention that the surplus will be spent on a commemorative tree which in turn will form part of the Queen's Green Canopy.

So many of you have remarked how the events over the four days brought a real sense of togetherness within the village, not surprisingly after all the traumas and restrictions that the pandemic gave us. We hope very much that that sense of togetherness will prevail on many occasions and for a long time to come.

*Your Jubilee Committee: Sheila Collins, Alison and Bruce Eyley, Simon Blackley and Robbie Rutt.*



*And here they all are, deserving our very great thanks for producing such a wonderful four days. It was a great achievement, and I think they should be duly pleased with the results. Pats on the back all round!*



**Thursday 2 June** — after the cricket match (see p9 for a report and more photos) came the lighting of the Beacon, which was apparently the best and brightest in the area. It was certainly very warm!



**Friday 3 June** — the children worked hard (with Simon's help) to create their own memorial display in the village hall.



The village hall committee put a great deal of effort into providing us with a memorable (and delicious) cheese and wine evening. It was very enjoyable — thank you all.



**Saturday 4 June** — 4pm at the church, where we all ate delicious cakes, admired the floral cascade and applauded those who knitted, crocheted and sewed it all together. Then into the church for songs of praise, with carefully chosen hymns.



And those with stamina went on to the hog roast at the Hood Arms.



**Sunday 5 June** — the oldest villager (Phyllis Lemon) and the youngest (Emily Leggett) were amongst those at the Big Lunch. Some took the opportunity to enjoy the facilities of Kilve Court, including the maze and the climbing wall. Some of us ate in the outdoor centre, some in the marquee, the erection of which provided an example of more teamwork.



Robbie compered the lunch, announcing the winners of the scarecrow competition and the treasure hunt, and the organising committee showed their teamwork again during the raffle, drawing tickets, identifying prizes and delivering prizes to winners.

The winning scarecrow is shown on p1, but the judge was so entertained by this entry from the Scott family that an unexpected second prize was awarded as well.



**Monday 6 June** — I don't know about you, but I was shattered.

They were four very well-organised days, and very enjoyable. So a big thank you to everyone involved, including Trevor Stanton, who took all these photographs and more, many of which you will see in the souvenir brochure.

*Jenny*



## **KITCHEN & BATHROOM FEATURES**

Find us on <https://www.facebook.com/kandbfeatures>

### **SUPPLY & FIT OR SUPPLY ONLY**

Kitchens, Bathrooms, En-suites, Plumbing  
Floor & Wall Tiling and Electrics  
Installation to the highest standard.  
Fully insured & Free Quotations  
Quality, at prices you can afford  
Family business with over 30 years' experience.

Home: 01278 651089

Mobile: 07894140533

Email: [ridgmentc@yahoo.co.uk](mailto:ridgmentc@yahoo.co.uk)

## **Kilve's Renowned 'Mr VIKTOR'**



Reliable Carpenter  
and Odd Job Man  
No job too small

Call VIKTOR  
ON 07902327701

## **DATA CAB TAXIS**

Doniford Watchet

4 and 7 seater taxis

We can also offer Executive Airport Transfers

01984 639141



## **BIDDISCOMBES of BRIDGWATER**

**Carpets & Furniture**

**Your local Experts**

**BEDS UPHOLSTERY**

**FURNITURE**

**Quality Service Value**

**01278 422364**

[www.biddiscombes.co.uk](http://www.biddiscombes.co.uk)



## **WEST QUANTOXHEAD MOTORS**

For all your motoring needs

**SERVICING & M.O.T.**

**Cars Vans 4x4s Trailers**

**TYRES A/C DIAGNOSTICS**

**COURTESY CAR**



**CALL BEN**

**for friendly advice & free quotes**

01984 632437

or 07799 584700

## **PARKE PLUMBING AND HEATING**

Professional & reliable Plumber

Qualified in oil, gas and LPG

Boiler servicing, installation and  
breakdown repairs

Bathrooms, radiators & system upgrades

**01278 741723**

**07860 553704**

[parkeph@gmail.com](mailto:parkeph@gmail.com)

## **Quantock Lodge Pool**

**Opening times 2022**

Sunday 10.30 am to 12.30 pm Family swim

Monday 6.30 to 8.15 pm Lane swim

Tuesday 7.30 to 10 am Adults and toddlers swim

Wednesday 7.30 to 10 am Adults and toddlers

Thursday 7.30 to 10 am Adults and toddlers

Thursday 6.30 to 8.15 pm Lane swim

**Quantock Leisure Ltd.**

**Over Stowey**

**01278 733375**

[info@quantocklodge.co.uk](mailto:info@quantocklodge.co.uk)



**Jewellery repairs  
and designs by  
Stephen Howard**

Commissions  
Melts and remakes  
Stone replacements  
Restoration  
Rhodium plating  
Cleaning  
**FREE ESTIMATES**

[Find me on Facebook](#)

## **The Goldbeach Studio**

East Quantoxhead, by appointment. 07790 467536 | 01278 741570  
[goldbeach@btinternet.com](mailto:goldbeach@btinternet.com) | [www.thegoldbeachstudio.com](http://www.thegoldbeachstudio.com)

## VILLAGE MEETING 2022

About 40 people attended the meeting on 18 June. The minutes will be published on the village website in the near future, but here are some of the main points from the meeting.

**Permissive path between the village and Rowditch Lane** A vote decided that this will be called the Hilltop Jubilee Path. With luck it should open fairly soon. It will actually be a bridleway, being at least 3m wide, allowing access for cyclists and horse-riders as well as walkers. The Parish Council has applied for grants to cover the installation and maintenance of fencing. To start with, the surface will remain as grass, but this will be reviewed if erosion or very heavy use demands something more hard-wearing. A bench will be placed on the path in memory of Peter Gill, who served on the Parish Council for many years.

**Christopher Robin Park** Work on fencing the park area is due to start on 13 July, and some items of gym equipment, with protective matting, should be installed shortly afterwards. These will be for adult use; the Parish Council needs to look at the safety measures required before any children's play equipment can be installed. A tree will be bought for the park with the surplus proceeds of the Jubilee weekend.

**Quiet Lanes and traffic management** As well as Quiet Lanes signage, the steering group is asking for a pedestrian crossing of the A39 in the centre of the village (possibly with traffic lights), and an extension of the 30mph limited stretch of the road. Data collected during the Quiet Lanes surveys supports both of these aspirations. The group is working with the County Council to develop a full plan, and it is hoped that the new unitary authority will be in favour of such initiatives.

**Village contingency plan** The Civil Contingency manager from the county Council, Nicola Dawson, spoke to the meeting, and outlined the help that her department can give us in setting up our own plan. Some villagers have already volunteered to help with this; if you are interested in joining them, contact Steve Collins (01278 741077).

**St Mary's Church PCC** Some good news in that more volunteers are helping with grass cutting, flowers and cleaning, but church funds are precarious and may run out by the end of 2023. The PCC intends to step up its fund-raising, with the gin tasting this month, a carol service in December, malt tasting in January, and possibly the return of the Easter antiques fair. If there is insufficient support, we may lose the church.

**Relationships with the new unitary authority** There is a paucity of information so far on how parishes will interact with the new authority and how things will change from next April. One interesting point was that the Quantocks AONB may become the planning authority, rather than the council.

**Village plan** This requires updating, and volunteers are needed. If you are interested in the future of Kilve and would like to help, contact Steve Collins (01278 741077).

## CAN YOU HELP?

St Mary's PCC urgently needs a voluntary secretary if anyone can spare a few hours. The PCC holds 4 to 6 meetings a year which require minuting, and any other correspondence which occurs in between.

If you think you may be able to help out, please contact one of the churchwardens:

- ◆ Arthur Williams (01278 741429)
- ◆ Frances Mayor (01278 741268)

## PLAY READING

The Play Reading Group at The Tom Poole Library, Nether Stowey, are hoping to start their activity again, once they have enough readers. They meet at the Library in Castle Street, one afternoon per month.

If you are interested in joining them, please contact Sian Stafford by e-mail:

eventsandpr@thomaspoolibrary.org.uk

## HOLFORD GARDENERS GROUP

Tuesday 19 July 6pm

### Members' Open Garden Meeting in Stringston

For more details tel 01278 741173



## FLOWER SHOW

Saturday 6 August

2 — 4.15pm

Holford and District Village Hall

## GENTLEMEN'S LUNCH

The next gentlemen's lunch is on Tuesday 5 July at The Hood, at 12.30 for 1pm.

To book, please contact Arthur on 01278 741429 or [Art\\_1948@yahoo.co.uk](mailto:Art_1948@yahoo.co.uk)



### CHRIS GREEN MOWERS

Specialising in repairs and servicing of lawn mowers and other garden machinery.

Suppliers of spares and new machines  
A collection and delivery service available

07714 281188

Email [chrisgreenmowers@hotmail.co.uk](mailto:chrisgreenmowers@hotmail.co.uk)  
Wibble Farm, West Quantoxhead

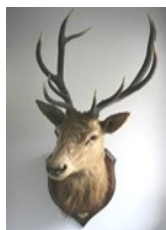
### WOODLOUSE CONSERVATION

Recognised specialists in  
Lime Rendering  
Lime Plastering  
Building Restoration  
and Conservation Projects



01984 629131 07788 810576

[www.woodlouseconservation.co.uk](http://www.woodlouseconservation.co.uk)



### EXMOOR PLUMBING

Reliable plumber  
No job too small

01984 639629

07970 632114

Radiators Cylinders Tanks Ball valves  
Bathroom suites Taps Washers Showers  
Soil pipes Waste pipes Gutters  
Drain clearance

**PLUMBING WORK COVERED**

### Pardlestone Farm

We would love to welcome your friends and family to Pardlestone Farm in Kilve where we offer bed and breakfast and a self-catering cottage – within walking distance of The Hood!



[www.pardlestonefarm.co.uk](http://www.pardlestonefarm.co.uk)

Please book online or call Mark or Ann on  
01278 256629, 07721 763993 or email

[enquiries@pardlestonefarm.co.uk](mailto:enquiries@pardlestonefarm.co.uk)

Pardlestone Farm, Pardlestone Lane, Kilve TA5 1SQ

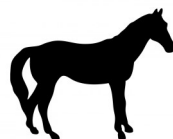
Kelvin Henson  
Painter and Decorator

Internal and External  
Old, new and business premises  
Property Maintenance

**35 YEARS EXPERIENCE**



01278 732949 07817 641645



### Purple Horse

07760 758 626

**Embroidery, Rug Cleaning & Repairs**

[sales@purplehorse.org](mailto:sales@purplehorse.org)

\*Personalised Embroidery\*

(Teamwear - Workwear - Equestrian)

\*Professional Rug Laundry and Repairs Service\*

\*Free Collections Available\*

\*Drop off at Williton Pet & Equine\*

### Williton Pet & Equine

Unit 11, Roughmoor Enterprise Centre  
Williton TA4 4AT

01984 631508

[www.willitonpetcare.com](http://www.willitonpetcare.com)

Pet \* Smallholder \* Equestrian  
Clothing for Horse & Rider

Local Delivery Available



### RUSSELL H BRYANT

PROPERTY MAINTENANCE & REPAIR  
TO DOMESTIC, AGRICULTURAL &  
EQUINE PROPERTIES  
Inc. PLUMBING REPAIRS ROOFING AND  
PLASTERING

EST 1988

L.C.G.I. & A.C.I.O.B. QUALIFIED  
FREE NO OBLIGATION QUOTES

01278 741054 07787371741

email [russellhbryant@yahoo.co.uk](mailto:russellhbryant@yahoo.co.uk)



## KILVE READING GROUP

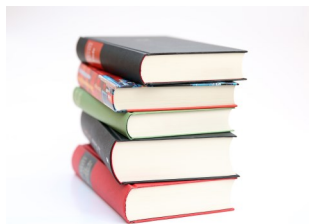
from Sue Hares

*The Fox in the Attic*, written by Richard Hughes, provided one of the most entertaining meetings enjoyed by the Group in the 12 years it has been running. Sheila Sharp opened the meeting with an incredibly interesting history of her employment with Richard Hughes and it explained so much about how the book was written. She worked for him after the publication of this particular novel and obviously read and enjoyed it. He had a bizarre approach to life and took many years over the writing of his books, which perhaps explains their format.

Only two members of the Group actually completed the book and the rest of us gave up at various stages. It was written in three sections and some made it as far as the second part but then totally lost it.

The novel was set between the two World Wars and involved a young member of the gentry from Wales. The first chapter was enjoyed by all and is incidentally the only bit Sheila can remember! The book was published in 1961 and was of its time and also the time Sheila read it. In the 21st century it was very difficult to understand. It started with what appeared to be a good story line and family saga, but then petered out into baffling ideologies and philosophies which completely "foxed" us. Apparently *The Fox* was Hitler – but I didn't get that far. It was a beautifully written book with some lovely descriptions of the countryside and the characters (of which there were many). Augustine the hero travelled between Wales and Germany at this unsettled time. One member who actually finished it and quite enjoyed it felt it should have been written as a history book as it was a fascinating period of our history.

The Group decided that the book was overworked, probably due to the fact that Hughes took so long over the writing and lost the narrative. There were supposed to be more volumes, but as Richard himself said it would be a race between him and the undertaker and the undertaker won.



*A number of Kilve residents are registered with the Quantock Medical Centre in Nether Stowey, and may be interested in this piece received from them.*

## News from the Quantock Medical Centre

We are very proud to announce that a special medal from Diabetes UK has been awarded to Helen Every, our Advanced Nurse Practitioner. Helen was given the award for living with Type 1 diabetes for 50 years. Helen was diagnosed when she was 9 years old. Type 1 diabetes is an autoimmune disease which develops when the body attacks its own insulin producing cells. It usually affects children and young people but can develop in older age. Helen has been injecting insulin for 50 yrs. She says she has experienced many changes in the management of her condition, from boiling glass syringes and metal needles (which became blunt and painful!) in a saucepan to sterilise them, to using insulin pens and Flash Glucose Monitoring. Helen has been working as a nurse for 42 years and went on to support patients with both type 1 and type 2 diabetes. When she applied to undertake her nurse training, unbelievably she had to fight discrimination because of her condition.

Alan Nabarro, whom the medal is named after, was diagnosed with type 1 diabetes in 1922, and was given six months to live. Fortunately, insulin was discovered in 1923 and he was able to manage his condition successfully over the following 55 years. He spent his career fighting discrimination for people living with diabetes. Helen says, I am happy to say that there are additional medals for those who have successfully lived even longer with diabetes. You can find the details at [https://www.diabetes.org.uk/about\\_us/medals](https://www.diabetes.org.uk/about_us/medals).



Pictured is Dr Christopher Stone, lead GP at the Quantock Medical Centre, presenting Helen with the Alan Nabarro Medal, along with her husband Geoff, son Harry, Dr Klein, Practice Manager Helen Stacey and Rose Baker, Lead Nurse.



The next meals will be on Thursday 30 June and Thursday 28 July at 12.00 for 12.30pm.

The menu provided by The Hood is always amazing and at such a fabulous price too!!

If you are interested in joining us, please let me know.

Kelly (741149)

[Kelly78stone@hotmail.co.uk](mailto:Kelly78stone@hotmail.co.uk)

Don't forget, you can view all the editions of Kilve News plus much more information about the village on the Kilve village website:

**[www.kilvevillage.co.uk](http://www.kilvevillage.co.uk)**

## COFFEE MORNING

Saturday 16 July  
10am — 12 noon  
Café/Bric-a-brac/Books



**East Quantoxhead Village Hall**



## THE HOOD ARMS, KILVE

### Opening Times

#### BAR

**Tuesday to Saturday:**  
**12 noon to 3 pm 6pm till close**  
**Sunday: 12 noon to 3pm**

#### FOOD SERVICE

**(Reservations recommended)**  
**Tuesday to Saturday:**  
**12 noon to 2pm 6pm to 9pm**  
**Sunday: 12 noon to 3pm**

**Closed Mondays**

**01278 741114**  
**[www.thehoodarms.co.uk](http://www.thehoodarms.co.uk)**



## M H KELLAWAY

### Chimney Sweep

**Aga & Rayburn Servicing**

**Wood burners serviced and installed**

**01278 741572**



## Chartered Architect

*Specialising in work to historic properties  
and buildings in sensitive landscape*

**ALINA WISNICKA** MSc Dip Arch RIBA MSc Building Conservation

Drawings for Planning  
and Listed Building Consent  
Working details and specification  
Building Contract Management

*Friendly and at reasonable rates*



T:01278 741755 m:07870305309 [alina@alinawisnicka.co.uk](mailto:alina@alinawisnicka.co.uk)

## Kilve Stores and Post Office

**01278 741214**

**[www.kilvestores.co.uk](http://www.kilvestores.co.uk)**

**[mfhirst@hotmail.com](mailto:mfhirst@hotmail.com)**

Free, local home delivery service  
Fresh bakery bread delivered daily  
Fruit & veg

Over 65 different wines in stock

Flo Gas stockist

Logs & kindling

Compost available all year

Special wine & beer offers

Brazier Smokeless Coal Stockist

**MONTHLY PREMIER SPECIAL OFFERS  
and MEGA DEALS**

**POST OFFICE – PAY POINT  
NATIONAL LOTTERY**

Newspaper deliveries to Holford & Hill Top



## KILVE STORES OFFICIAL STOCKIST

Pop into Kilve Stores to view our range of Frenchic Furniture Paint.

We stock a wide range of paints from the Original Artisan Range, the Lazy Range, and the Al Fresco Range along with all the sundry items you need including a variety of waxes, finishing coat, Freshneen brushes, stencils, sugar soap and lots more!

**Pop in and have a look  
and join the Frenchic Craze!**

**Contact us on 01278 741214 or 07766 018847**

**Facebook: Kilve Stores and Post Office**

## W.W.REFURBISHING

TILING  
SKIMMING  
PAINTING

**Call WALDI  
on 07837 918337**







## VILLAGERS RUN CHASE SINKS WITH THE SUN

The first event of the jubilee celebrations, a cricket match between the Villagers and Kilve CC, was played in perfect conditions in front of a crowd of well in excess of 100. The Villagers won the toss and put Kilve CC into bat. Despite a good effort in the field, with 3 wickets for Jamie Scott and one apiece for David Tansley and Barry Jordan, Kilve CC took advantage of the short boundary and produced 180 runs from 30 overs. Fielding highlights were Richard Marchant's catch and Sarah Hayward's run out from 30 yards.

After tea the match resumed with a challenging 6 per over required from the Villagers. Sadly, despite a strong 31 not out by Ashley Parke the other top order batsmen were all out for a total of 8. It was looking grim for the Villagers until a steady 16 from Pat Hayward and 13 from Steve Collins. Then the match turned as Kilve CC conceded a high number of wides and no balls.

Suddenly the Villagers had a chance, needing 8 from the last over. Sensing defeat, Kilve CC recalled their top fast bowler, who from the pavilion end with the sun directly behind him, produced a series of unplayable balls leaving 6 required from the last ball, which again whizzed past Mark Walton in a blur. Kilve CC deservedly won by 6 runs.

Thank you for your support on the day. The next match of the series is at 5pm on Wednesday 27 July, before the final match on Sunday 4 September. The Villagers are practising on Monday evenings between 5 & 7pm. If you are interested in joining a practice or playing, please get in touch.

*Mark Walton (Villagers Captain)*

### CHANTRY TEA GARDENS

Near Kilve Beach

Morning Coffee, Lunches,  
Afternoon Teas, Home-made Cakes  
and Ice Creams

Nick and Jacqui Dawe

01278 741457

chantry\_cottage@hotmail.com



### NEIL COBB GENERAL BUILDER

EXTENSIONS  
BATHROOMS  
ROOFING  
KITCHENS  
BRICKWORK  
STONE WORK



FREE ESTIMATES  
01278 425740 07753620961



*I found this among the archives, and thought it tied in rather nicely with Mark's report.*

## TWENTY FIVE YEARS AGO

*From Issue 102 July 1997*

Youth cricket was flourishing at Kilve CC, with about 23 young people (presumably all boys in those days) turning out for the weekly training sessions.

The Club had received generous support from the Lords' Taverners in the shape of what was described as "a lovely set of kit — bats, pads, gloves etc".

A pity there are no photographs!

this month  
**25**  
years ago

### ALAN MANCHIP

NICEIC Approved Electrical Contractor  
Domestic Commercial Industrial Agricultural  
Part P Domestic Installer Inspecting and Testing  
Portable appliance testing  
REFRIGERATION and AIR CONDITIONING  
Design Supply Install Maintain

24 HOUR EMERGENCY CALL OUT

01278 733536

Inwood farm Nether Stowey  
E mail office@alanmanchip.co.uk



### Andy Reeves

#### General Handyman

I work by the hour or by estimates. I have over 16 years experience since retiring from my full time work. I have personal liability insurance and a Henry vacuum to clear up after myself.

07971 874839 andrewree@gmail.com

Seasoned logs for sale

### ROBIN PARKER TREE SERVICES

All aspects of tree work undertaken

Felling, dismantling, pruning  
Woodland maintenance  
Garden maintenance  
Hedge trimming  
Logs and firewood for sale

01984 568047



### LAKESIDE CARPENTRY

*Custom ~ Design ~ Build*

**MYLES JONES**

07503 312961

lakesidecarpentry@hotmail.com

ALL ASPECTS OF CARPENTRY & JOINERY  
KITCHENS  
FITTED WARDROBES  
WINDOWS & DOORS  
RENOVATIONS & RESTORATION



### Tracy Wint SOFT FURNISHINGS

Having spent hundreds or even thousands on your decor, why settle for ready made or only a near match when it comes to dressing your beautiful home?

A complete, fast, friendly and personal service with quality second to none... and at a price that will undoubtedly surprise.

For your made to measure curtains, blinds or other soft furnishings simply call an expert.

**TRACY WINT  
SOFT FURNISHINGS  
01278 732734**

tracywint@btinternet.com

*Roman Blinds a speciality!*



### CHIROPODIST

*Grace Brown*

M Inst CH P Reg no. Ch23926

**FREE CONSULTATIONS**

Nail Cutting & Filing. Hard skin & Thickened Nails  
Corn & Callus Removal. Ingrowing Toe Nails  
Diabetic Foot Care Advice. General Foot Health

**Full Disabled Access**

**East Street Cannington TA5 2HJ  
01278 651251**

[www.browns-hairandbeauty.co.uk](http://www.browns-hairandbeauty.co.uk)

### BROWNS Hair & Beauty

Ladies, Gents & Children  
Modern & Friendly Environment  
Gift Vouchers Available  
Full Disabled Access

**East Street Cannington TA5 2HJ**

**01278 651251**

[www.browns-hairandbeauty.co.uk](http://www.browns-hairandbeauty.co.uk)



## VILLAGE HALL NEWS

from Sarah Hayward

### New committee update

Following the first meeting of the new committee joint Vice-Chairs were appointed: Claire Heather and Sarah Hayward. Kath Cook agreed to take on housekeeping as well. Heather Blackley has stepped down from the committee, and we'd like to thank her for her hard work, housekeeping and stepping in for bookings. We will be putting our minutes and dates on the village website: <https://killevillage.uk/about-kilve/village-hall/>

### 100 Club

The winners for May were:

1. Sue and Pete Hares
2. Pam Cuff

If you would like to join the club please contact us — the more members the bigger the prize and the funds raised!

### Afternoon tea in aid of the Air Ambulance Tuesday 12 July 3pm

The cream and jam for this event has been kindly donated by Rodda's Dairies and the makers of Tiptree jams, so even more money will go towards Air Ambulance funds. Now, cream first or jam? Tickets from Pat Woolley (01278 741157).

### Kilve open gardens / Art and Craft sale Saturday 2 July 10am — 4pm

Please contact the village hall team as soon as possible if you would like to be one of our open gardens — we'd love to see as many gardens as possible — 'cos we are nosy! To book a table to show and sell your artistic and crafty endeavours for £5 per table please get in touch. Garden tour guides from the Village Hall from 10am — £3. Refreshments available.

### Reminder: 2023 Kilve Calendar Photograph Competition: scenes and characters of Kilve Closing date for submission 1 October

Photographs (non-returnable) in envelopes labelled Calendar Competition to Village Hall Post Box, Village Stores, or any member of the Committee, name and contact details on reverse; by submitting the photograph you agree to publication by the village hall. Please keep a digital copy for publication in the event of winning a place in the calendar.

Judging will be by village members at the Annual Cheese and Wine evening on 7 October.

Calendars will be on sale from end of October — pre-orders would be much appreciated

Watch this space for curry night, Christmas party, quiz nights, films in the autumn, bingo — and if **you** have any ideas or requests, please let us know.

For more information and tickets etc. contact: Ailsa (01278 741609), or [kvh@hayward.uk.net](mailto:kvh@hayward.uk.net)

To book the hall: [kvhbookings@gmail.com](mailto:kvhbookings@gmail.com) (forms are here: <https://killevillage.uk/about-kilve/village-hall/>)

## A HELPING HAND



A few of us in the village are anxious that within our small community there may be a few people who are struggling with the excessive rise in food and energy prices. We can't possibly promise to find a complete solution but there are ways in which we can help practically.

If you are in such a position, now or in the coming months, you are invited to get in touch and we will certainly do our best to help. We must emphasise that any enquiry will be dealt with the utmost confidence.

Please contact Robbie and David:

Telephone 01278 741594

Text 07850 102874

Email [davidandrobbie@talktalk.net](mailto:davidandrobbie@talktalk.net)



### FORGET-ME-NOT CAFE

Jubilee Rooms (formerly Church Rooms),  
Castle Street, Stogursey

**Every other Wednesday 10.30 until 12.00**

### RECENT EVENTS

We had a lovely morning of celebrations to wish Rose and Merve well for their Wedding Day. Jan Ford wrote and read a beautiful poem for Rose.

We ran Tombola at the Jubilee Fete held at Burton Springs — thank you, Jennifer, Gareth, Amanda & Stan for organising such a wonderful event. We're delighted to say we raised an amazing £293 for the Café. A HUGE THANK YOU to everyone who donated prizes, including HPC, helped on the day and came along to buy tickets.

### SUMMER DATES

Wed 6 July

Wed 20 July — Summer Outing so not in the Jubilee Rooms

Wed 3 August

Wed 17 August

Wed 31 August

Forget-Me-Not Cafés provide support, companionship and a warm welcome to those who are recognising issues with their memory, as well as their carers, family, and friends.

All are welcome to come along for a cuppa and a friendly chat.

For more information please contact:

Helen: 01278 734818 [cuttelhelen@gmail.com](mailto:cuttelhelen@gmail.com)

Rose: 07507 374234 [rosechalk@icloud.com](mailto:rosechalk@icloud.com)

## DIARY DATES

**Sat 25 June 10:30am** Coffee Morning (Coffee & Cake)  
KVH

**Mon 27 June 2pm** Quantock u3a, Holford VH

**Thurs 30 June 12 noon** Ladies Who Lunch, Hood Arms

**Sat 2 July 10am — 4pm** Art & Crafts, KVH; Open Gardens, various locations. Contact committee to take part.

**Tues 5 July 12.30 for 1pm** Gentlemen's Lunch, Hood Arms

**Tues 12 July 3pm** Afternoon Tea, KVH — raising funds for Air Ambulance Service. Tickets from Pat Woolley (01278 741157).

**Sat 16 July 10 — 12 noon** Coffee morning EQVH

**Sat 16 July 7pm** Annual Gin Tasting Evening, KVH

**Sun 17 July 1pm** Cricket Match Kilve CC v VRA  
Amsterdam CC, Beach Ground

**Mon 25 July 2pm** Quantock u3a, KVH

**Wed 27 July 5pm** Cricket Match Kilve CC v The Villagers,  
Beach Ground

**Sat 30 July 10:30am** Coffee Morning (Coffee and Cake)  
KVH

**Sat 20 August 10:30am** Coffee Morning (Coffee and Cake)  
KVH — NB NOT the last Saturday due to Bank Holiday

## A FLORAL ARCH



Kilve is not the only village where knitting needles and crochet hooks have been hard at work in recent months.

This is the entrance to East Quantoxhead church; the arch is intended to remain on display for some weeks.

## OUR NEXT ISSUE

Our next issue will be for August.

Please send contributions to the Editor (contact details on page 1) or the Village Stores (marked Kilve News).

**Please note:**

**NO LATER THAN 18 JULY**

If you have reports, adverts or contributions ready before the deadline please let us have them as soon as possible. It really does help having them well in advance of the 18th.



## STAN EYNOTT

It is with much sadness that the village learnt of the passing of Stan.

I was very lucky to have known Stan and his late wife Margaret from their very first day here in Kilve. Back in the early 90's Stan and Margaret came to stay with me when I owned the Hood Arms. They remarked how much they not only liked this beautiful area in which we live, but also what a nice village Kilve was. At that time Millstream was in the throes of being built and before one could say 'Jack Robinson' they bought the property and promptly made the move to Kilve. Stan had been a well-respected member of the British Telecom Management Team but retired on moving to Kilve. Both he and Margaret enjoyed many happy years here in the village and were to be seen enjoying and helping in so many of the village activities.

Margaret sadly passed away a few years ago, and dear Stan rightly decided that he would like to see out his remaining days in the village they had made their home. A fine innings, Stan would have celebrated his 92nd birthday in August.

On behalf of the village, we extend much sympathy to his daughter Jane and the rest of the family,

*Robbie*

## SHORT MAT BOWLS

Every Monday evening at 7pm

Kilve Village Hall

Do come and join us!

## GIN TASTING

Evening  
has been arranged for

**SATURDAY 16 JULY**  
at 7pm

**Book your tickets now!**  
**£20 including finger buffet**  
from

**Robbie 741594**

or

**Mark 741095**

**(Wine ticket also available)**

**In aid of St. Mary's Kilve**