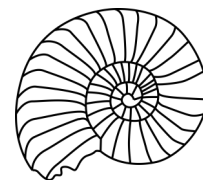

KILVE NEWS



Issue 357

June 2022

EDITORIAL

A sad start to the month, with the death after a long illness of Margaret McPheat. We all miss her presence in the shop, particularly her sharp and dry sense of humour; I often left laughing when she was behind the counter.

Margaret might have appreciated the anonymously-contributed article below, suggesting that the village is about to experience some delightful events. It all sounds most intriguing!

Some good news just as we go to press. **Parking will be free of charge** in the beach car park from 4pm on Thursday 2 June until 2am on Friday 3 June to cover the cricket match and the lighting of the beacon. Many thanks to Hugh Luttrell for this.

Jenny

Contact the Editor on 01278 741663

e-mail jakent@btinternet.com

or text on 07745 805006



Lady Whistledown has it on good authority, that the Ton is about to experience celebrations that are the highlight of the decade. Every member of this illustrious village will be able to promenade at the cricket to cheer on those brave souls in the pursuit of immortality. All is fair in love and war.

Fine victuals will be available, followed by the lighting of the beacon. This will signal to all around that Her Majesty has pleasure in observing her loyal subjects enjoying a few days' leave from their toil.

The second day of bank holiday will see the great and the good in their finery, tasting the wine and the cheese. This free event will surely be the time for sharing gossip and meeting friends and acquaintances.

It is as true today, as in the not-so-distant past, that people enjoy cake. The Floral Cascade is a triumph of craft and coordination that can be perused whilst eating cake, sipping tea and discussing all of the goings on between the unchaperoned at the Wine and Cheese on yester-eve.

That will then be put behind one, as the Songs of Praise will require full concentration to demonstrate the value of those singing lessons during one's formative years. There will be little time to sit on one's laurels, though, as the Hog Roast feast will begin at The Hood and the music and dancing is likely to go on into the small hours.

Like most celebrations that include all of the characters of our great community, Sunday will see a coming together, the like of which has not been seen for a goodly time. The Big Lunch is a street party that will allow you, dear reader, to share in this fabulous experience, that will be talked about for many a year.



MARGARET MCPHEAT

I would like to thank all who attended Margaret's funeral on 16 May, and all who have donated to Charlotte (cancer research) for doing the half marathon in her memory — this is most appreciated.

Best wishes to all.

Mac (E. McPheat)

And Matt has written this tribute.

Sadly, Margaret passed away on Saturday 30 April 2022. She was a very special friend and a Kilve Stores Legend.

Back in August 2007 I bought Kilve Stores which was on the brink of bankruptcy, no staff and generally in a very sorry state. After spending the first month or two working 80 hours per week and struggling to cope I put the word out that we needed a member of staff. Everyone said "Call Margaret, she's worked for several of the previous owners over the years". After a brief phone call, she started straight away and worked with me for pushing fifteen years.

We loved Margaret; she was such a genuine, caring person. She helped build Kilve Stores up over the years, and helped me through my first marriage and divorce!!!

When I met my wife Charlotte and her two very young children Ysabel and Georgia, she welcomed them and made them feel at home at Kilve Stores.

She worked more or less every weekend, opening up and closing the shop which enabled me, Charlotte and the girls to go out enjoy life. The girls had an amazing time growing up and most of this was made possible because of Margaret.

She never missed a birthday, even this year when she was very poorly and in and out of hospital, she didn't forget my birthday, Charlotte's or Ysabel's.

She was loved and respected by everyone in the shop, never got flustered and took everything in her stride. Loved chatting (and gossiping) to the customers.

We consider Margaret and her husband Mac to be a part of our family, they have been involved in everything since I bought the shop. We are absolutely devastated by the sad news and words cannot describe how much we miss her.

Margaret loved a glass (or five) of red wine, we toast you most evenings after work and we will remember you and talk about you forever.

We're heartbroken for her husband of 60 plus years, Mac, and children, grandchildren, and great-grandchildren.

Thanks for everything, Margaret xx

Matt



KILVE CELEBRATES

THURSDAY 2 JUNE

CRICKET MATCH

Starting at 5 pm

Kilve Village

Versus

Kilve Cricket Club

LIGHTING OF THE BEACON

9.45 pm

Prior to the lighting

You are invited to

Picnic on the beach

(Bring your own picnic, ice cream will be on sale and don't forget to take chairs, rugs, etc)

or avail yourselves of the

BARBECUE and LICENSED BAR

at the Cricket Club

NB FREE PARKING!!!

FRIDAY 3 JUNE

CHEESE AND WINE PARTY

Kilve Village Hall

6.30 to 9pm

There is no charge for this event which is being very kindly hosted by

The Village Hall Committee

The Jubilee working party:

Sheila Collins (741077), Alison and Bruce Eyley (741317), Simon Blackley(741549) and Robbie Rutt.

If you have any queries whatsoever to do with the arrangements for the Jubilee weekend please contact Robbie:

Text 07850 102874

Email davidandrobbie@talktalk.net

Telephone 01278 741594



SATURDAY 4 JUNE

A JUBILEE VILLAGE

COMPETITION

'THE SCARECROW'

A unique chance for every household to join a fun village project with a

FIFTY POUNDS

Prize for the winners!

Ideally your scarecrow should be erected on the week-end commencing **Saturday 28 May**.

Judging will take place on the morning of **Saturday 4 June** and the winners announced on **Sunday 5 June** at the Big Lunch.

FLORAL CASCADE

St. Mary's Church

4.00 pm

Afternoon tea and cake

There is no charge for this event which is being very kindly hosted by

St. Mary's PCC

followed at **5.00 pm** by

'SONGS OF PRAISE'

In the Church

EVENING VILLAGE GARDEN PARTY

The Hood Arms

Hog Roast (served from 6 to 8pm)

and musical entertainment by Sarah Randle

Tickets for this event are priced at £15 per person and you are kindly requested to

pre-purchase your tickets directly from the Hood Arms.

THE PLATINUM JUBILEE

SUNDAY 5 JUNE

CHILDREN'S FUN DAY

Kilve Court is very kindly and generously putting on a programme for all children to enjoy. Children should assemble outside the main door of Kilve Court at 10 am. There will be two qualified supervisors in attendance at all times. A break will be made at 12 noon for lunch and an additional hour of activity will recommence at 2 o'clock.

THE BIG LUNCH

Kilve Court Outdoor Centre

12 Noon

(Ticket holders only)

This will take the form of a cold buffet lunch being served from 12.30 with seating both inside the centre and also on the picnic tables outside.

(BYO liquid refreshment and glasses.
Disposable cups will be available).

Following lunch, the winners of the Scarecrow Competition and the Treasure Hunts will be announced and the draw made for the

Jubilee Raffle

Apart from more activities for the children, adults will be able, amongst other things, to explore the maze which will be open and attempt the climbing wall!!

We are also hoping to relay the Jubilee Pageant on the big TV screen.

(Please help us to ensure that Kilve Court is left litter free!)

May we ask any of you who take photos at any of the Jubilee events, if we might have a copy as we are planning to record the occasion in a Souvenir Brochure. Thank you.

FAMILY TREASURE HUNT

How well do you know Kilve?

3 routes (or do them all)

Suitable for all ages (separate sheet for children if preferred)

Collect your questions at the Cricket Match on 2 June (or download from the village website, or ask one of the working group)

Return completed sheets at the beginning of the Big Lunch (or sooner) to Sheila Collins (Putsham Farmhouse)

PRIZES FOR EACH CATEGORY

Winners will be announced at the Big Lunch

THE GREAT JUBILEE RAFFLE

We are pleased to announce that we have a great list of prizes to be won.

Tickets for the Raffle will be on sale at all the week-end events and the draw will take place at the Big Lunch on Sunday 5 June.

(As you will appreciate the whole week-end will involve quite a number of expenses and we hope very much that everyone will support the Raffle which will help to offset this).

IMPORTANT

Unless under the supervision of the Kilve Court qualified instructors, children must be accompanied and supervised by adults at all times.

The Organising Committee will NOT accept responsibility for any injury or mishap, however caused.

It is the responsibility of all attending, at whatever event, to ensure that they take home with them all litter, rubbish, bottles, etc.

KITCHEN & BATHROOM FEATURES

Find us on <https://www.facebook.com/kandbfeatures>

SUPPLY & FIT OR SUPPLY ONLY

Kitchens, Bathrooms, En-suites, Plumbing
Floor & Wall Tiling and Electrics
Installation to the highest standard.
Fully insured & Free Quotations
Quality, at prices you can afford
Family business with over 30 years' experience.

Home: 01278 651089

Mobile: 07894140533

Email: ridgmentc@yahoo.co.uk

Kilve's Renowned 'Mr VIKTOR'



Reliable Carpenter
and Odd Job Man
No job too small

Call VIKTOR
ON 07902327701

DATA CAB TAXIS

Doniford Watchet

4 and 7 seater taxis

We can also offer Executive Airport Transfers

01984 639141



BIDDISCOMBES of BRIDGWATER

Carpets & Furniture

Your local Experts

BEDS UPHOLSTERY

FURNITURE

Quality Service Value

01278 422364

www.biddiscombes.co.uk



WEST QUANTOXHEAD MOTORS

For all your motoring needs

SERVICING & M.O.T.

Cars Vans 4x4s Trailers

TYRES A/C DIAGNOSTICS

COURTESY CAR



CALL BEN

for friendly advice & free quotes

01984 632437

or 07799 584700

PARKE PLUMBING AND HEATING

Professional & reliable Plumber

Qualified in oil, gas and LPG

Boiler servicing, installation and
breakdown repairs

Bathrooms, radiators & system upgrades

01278 741723

07860 553704

parkeph@gmail.com

Quantock Lodge Pool

Opening times 2022

Sunday 10.30 am to 12.30 pm Family swim

Monday 6.30 to 8.15 pm Lane swim

Tuesday 7.30 to 10 am Adults and toddlers swim

Wednesday 7.30 to 10 am Adults and toddlers

Thursday 7.30 to 10 am Adults and toddlers

Thursday 6.30 to 8.15 pm Lane swim

Quantock Leisure Ltd.

Over Stowey

01278 733375

info@quantocklodge.co.uk



**Jewellery repairs
and designs by
Stephen Howard**

Commissions
Melts and remakes
Stone replacements
Restoration
Rhodium plating
Cleaning
FREE ESTIMATES

[Find me on Facebook](#)

The Goldbeach Studio

East Quantoxhead, by appointment. 07790 467536 | 01278 741570
goldbeach@btinternet.com | www.thegoldbeachstudio.com

PARISH COUNCIL NEWS

from Steve Collins

Kilve is entitled to seven parish councillors, but only five of the six serving councillors wished to continue in office after the local elections in May. There were no other candidates for election, so the following five were appointed unopposed:

Councillors Elizabeth Grigg, Pat Hayward, Simon Blackley, Bruce Eyley and Steve Collins.

Greg Glendell decided to step down as a councillor but many thanks to him for his very valuable achievements over the years that he served. Greg has very generously agreed to continue to represent the Parish for footpaths and bridleways.

There are at present two councillor vacancies so if anybody is interested in joining, they should in the first instance contact any councillor or the Clerk (Karen Scott).

Annual Parish Council Meeting

The first Parish Council meeting of the recently appointed councillors took place on 17 May. Steve Collins was re-elected as Chair and Bruce Eyley re-elected as vice Chair.

The financial accounts for the year ending 31 March 2022 were reviewed and a budget agreed for this year including significant provisions for the adoption of the permissive path/bridleway from Rowditch Lane to the village, Kilve Quiet Lanes and the establishment of the Christopher Robin Park.

The Council's Policies and Procedures were reviewed as required annually and following some minor amendments will be republished as appropriate.

The Annual Village Meeting was confirmed for Saturday 18 June starting at 10am until midday in the Village Hall. Refreshments will be provided and the agenda for the event will be publicised shortly.

The newly re-elected County Councillor Hugh Davies as usual attended the meeting and provided an update on the changes expected at the County Council as a consequence of the Liberal Democrats now being the majority party. We are hoping to receive a more detailed report on how the current County Council will transition to a Unitary Local Authority at the Annual Village Meeting on 18 June.

WOMEN'S CRICKET TEAM

Could you be the next Nat Sciver or Anya Shrubsole? If so, come to Kilve Cricket Club! The club now has a women's team, and we are looking for new members.

All ages and abilities are welcome. Practice sessions are held on Friday evenings. Arrive anytime after 6.00pm; official coaching is from 6.30 — 7.45 pm, with a wind-down and refreshments afterwards.

We also plan to have some matches (hopefully to include a friendly against the village) during the season. Initially this will begin as mostly Soft Ball Cricket.

If you are interested, please contact me on 07967372164 or at angelajmorley@yahoo.co.uk.



Angela Wilcox

KILVE LUNCH CLUB

from Pat Woolley

The Lunch Club started in November 2019. We regularly had 20 to 25 people enjoying a meal cooked and served by willing volunteers. Unfortunately for a number of reasons the number of Kilve residents attending has decreased considerably, therefore, after much discussion we have decided that the lunch on 15 June will be the last one. We may review this decision in the Autumn.

On Tuesday 12 July we are going to serve a Cream Tea in the Village Hall to raise money for the Air Ambulance. Tickets will be £3.50, everyone welcome. Tickets will be available at the May and June coffee mornings or from Pat Woolley, Streamside, Sea Lane (01278 741157).

HOLFORD GARDENERS GROUP

Tuesday 21 June 7.30 pm

Kew's Victorian Gem

A talk by Gena Merrett Smith

Members £1.00 Visitors £2.00

Holford and District Village Hall

A warm welcome to all

QUANTOCK FOODBANK

The foodbank was set up in 2018 and since that time has fed over 12,000 people in an area stretching from Watchet to Crowcombe, and from Stogursey to Roadwater. Needy families are referred by over 65 local agencies, such as GP surgeries, schools, councils, police, churches and more.

Last July the foodbank set up a pantry for struggling families to visit, with the aim of preventing them reaching crisis point and becoming dependent on volunteers delivering food parcels. This has proved popular as it allows some choice, but access is difficult for people who have no transport and is especially challenging for those living in isolated and rural locations.

The foodbank is now planning to buy an electric vehicle to allow it to take the pantry to those unable to visit in person. Unfortunately, the lead time for delivery of such a vehicle is about 12 months, so the team are looking at other temporary arrangements in the meantime.

The current increases in the cost of living are making the work of the foodbank even more vital. Any donations we make through Kilve Stores are especially valuable because Matt and Charlotte provide food and household items at cost, which means that the foodbank gets more for our money. Contact Matt or Charlotte if you would like to help in any way.



CHRIS GREEN MOWERS

Specialising in repairs and servicing of lawn mowers and other garden machinery.

Suppliers of spares and new machines
A collection and delivery service available

07714 281188

Email chrisgreenmowers@hotmail.co.uk
Wibble Farm, West Quantoxhead

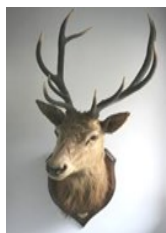
WOODLOUSE CONSERVATION

Recognised specialists in
Lime Rendering
Lime Plastering
Building Restoration
and Conservation Projects



01984 629131 07788 810576

www.woodlouseconservation.co.uk



EXMOOR PLUMBING

Reliable plumber
No job too small

01984 639629

07970 632114

Radiators Cylinders Tanks Ball valves
Bathroom suites Taps Washers Showers
Soil pipes Waste pipes Gutters
Drain clearance

PLUMBING WORK COVERED

Pardlestone Farm

We would love to welcome your friends and family to Pardlestone Farm in Kilve where we offer bed and breakfast and a self-catering cottage – within walking distance of The Hood!



www.pardlestonefarm.co.uk

Please book online or call Mark or Ann on
01278 256629, 07721 763993 or email

enquiries@pardlestonefarm.co.uk

Pardlestone Farm, Pardlestone Lane, Kilve TA5 1SQ

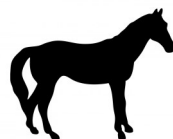
Kelvin Henson
Painter and Decorator

Internal and External
Old, new and business premises
Property Maintenance

35 YEARS EXPERIENCE



01278 732949 07817 641645



Purple Horse

07760 758 626

Embroidery, Rug Cleaning & Repairs

sales@purplehorse.org

Personalised Embroidery

(Teamwear - Workwear - Equestrian)

Professional Rug Laundry and Repairs Service

Free Collections Available

Drop off at Williton Pet & Equine

Williton Pet & Equine

Unit 11, Roughmoor Enterprise Centre
Williton TA4 4AT

01984 631508

www.willitonpetcare.com

Pet * Smallholder * Equestrian
Clothing for Horse & Rider

Local Delivery Available



RUSSELL H BRYANT

PROPERTY MAINTENANCE & REPAIR
TO DOMESTIC, AGRICULTURAL &
EQUINE PROPERTIES
Inc. PLUMBING REPAIRS ROOFING AND
PLASTERING

EST 1988

L.C.G.I. & A.C.I.O.B. QUALIFIED
FREE NO OBLIGATION QUOTES

01278 741054 07787371741

email russellhbryant@yahoo.co.uk

KILVE READING GROUP

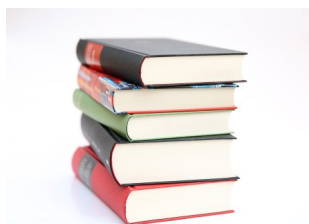
from Sue Hares

The Reading Group had a very exciting month in April! Bridgwater Library hosted a "Meet The Author" day with Hazel Prior, who coincidentally wrote *Away With The Penguins* which was our current read!

Five of us travelled to Bridgwater and met her. Unfortunately, the traffic was awful so we struggled to get there on time, but mostly made it. It was certainly worth the effort. She was a lovely girl who lives on Exmoor and *Away With The Penguins* was her second novel, the first being *Ellie And The Harp-Maker*. She told us of her life and read extracts from her books, accompanying herself on the harp. It was beautiful music and a lovely afternoon.

The novel itself, *Away With The Penguins*, proved also to be a really enjoyable read. It was well written and had a good story line. The heroine, a feisty old lady with some "baggage" took herself off to the Antarctic to look at penguins. It was "a glorious, life-affirming story". Hazel told us that she wanted to write an uplifting tale and she certainly managed that even though she involved some current issues both ecological and domestic.

The entire book was a delight and much to be recommended.



CAN YOU USE THE DEFIBRILLATOR?

On 29 April I attended the training session given in the Village Hall by Jonathan Warren from the South West Ambulance Service NHS Foundation Trust. Most of us had previously attended first aid courses, though for me at least this was the first one to cover the use of a defibrillator. It was very straightforward, and not as intimidating as I had feared! I was particularly pleased that shouting loudly for help was one of the first actions you should take, as I already knew how to do that.

We covered the procedures for treating a casualty until help arrives, including a reminder of how to give CPR. Apparently the current song to prompt the correct rhythm is *Baby Shark*, though *Nellie the Elephant* and the Bee Gees' *Stayin' Alive* were probably more familiar to most of us. Jonathan did say that it was probably best not to sing the words if we were using the last one.

The Kilve defibrillator is on the wall of The Hood Arms nearest to Kilve Stores. Elizabeth Grigg is the Guardian of the defibrillator, and she is responsible for checking it and sending a monthly report to SWASFT. Should anyone need help, Elizabeth is available on 01278 741645 or 07765 994013.

At the end of the session I felt much more confident that I might be able to help in an emergency (apart from just shouting). I believe that SWASFT aims to repeat the training annually, and I thoroughly recommend it.



Jenny



The next meals will be on Thursday 30 June and Thursday 29 July at 12.00 for 12.30pm.

The menu provided by The Hood is always amazing and at such a fabulous price too!!

If you are interested in joining us, please let me know.

Kelly (741149)

Kelly78stone@hotmail.co.uk

COFFEE MORNING

Saturday 18 June
10am — 12 noon
Café/Bric-a-brac/Books



East Quantoxhead Village Hall

QUANTOCK u3a

The Quantock u3a is now established, and has its meetings on the 4th Monday of each month, starting at 2pm. Just to keep us all on our toes, however, and to ensure that every village has a turn, the meetings will rotate around different village halls.

The list below is correct at the moment. But things can change, so it would be worth checking the venue if you want to attend a meeting. Contact Karen Scott on 07910 706916.

June 27	Holford VH
July 25	Kilve VH
August	no meeting
September 26	venue to be agreed
October 24	venue to be agreed
November 28	venue to be agreed
December	no meeting



From the beginning of the year, residents of East Quantoxhead have been knitting and crocheting flowers in readiness for our Queen's Platinum Jubilee. A floral arch will decorate the entrance to St Mary's EQ with other floral decorations inside the Church.

All on display for a few weeks from 31 May. Visitors welcome



THE HOOD ARMS, KILVE

Opening Times

BAR

Tuesday to Saturday:
12 noon to 3 pm 6pm till close
Sunday: 12 noon to 3pm

FOOD SERVICE

(Reservations recommended)
Tuesday to Saturday:
12 noon to 2pm 6pm to 9pm
Sunday: 12 noon to 3pm

Closed Mondays

01278 741114
www.thehoodarms.co.uk



M H KELLAWAY

Chimney Sweep

Aga & Rayburn Servicing

Wood burners serviced and installed

01278 741572



Chartered Architect

*Specialising in work to historic properties
and buildings in sensitive landscape*

ALINA WISNICKA MSc Dip Arch RIBA MSc Building Conservation

Drawings for Planning
and Listed Building Consent
Working details and specification
Building Contract Management

Friendly and at reasonable rates



T:01278 741755 m:07870305309 alina@alinawisnicka.co.uk

Kilve Stores and Post Office

01278 741214

www.kilvestores.co.uk

mfhirst@hotmail.com

Free, local home delivery service
Fresh bakery bread delivered daily
Fruit & veg

Over 65 different wines in stock

Flo Gas stockist

Logs & kindling

Compost available all year

Special wine & beer offers

Brazier Smokeless Coal Stockist

**MONTHLY PREMIER SPECIAL OFFERS
and MEGA DEALS**

**POST OFFICE – PAY POINT
NATIONAL LOTTERY**

Newspaper deliveries to Holford & Hill Top



KILVE STORES OFFICIAL STOCKIST

Pop into Kilve Stores to view our range of Frenchic Furniture Paint.

We stock a wide range of paints from the Original Artisan Range, the Lazy Range, and the Al Fresco Range along with all the sundry items you need including a variety of waxes, finishing coat, Freshneen brushes, stencils, sugar soap and lots more!

**Pop in and have a look
and join the Frenchic Craze!**

Contact us on 01278 741214 or 07766 018847

Facebook: Kilve Stores and Post Office

W.W.REFURBISHING

TILING
SKIMMING
PAINTING

**Call WALDI
on 07837 918337**



OUR NEXT ISSUE

Our next issue will be for July.

Please send contributions to the Editor (contact details on page 1) or the Village Stores (marked Kilve News).



Please note:

NO LATER THAN 18 JUNE

If you have reports, adverts or contributions ready before the deadline please let us have them as soon as possible. It really does help having them well in advance of the 18th.

CHURCH FLOWERS

Sally Quinn and Joy Orritt have taken over the organisation of flower arrangements for the church. They are now looking for anyone who could volunteer their time, maybe an hour or so once every 3 months to help them. You don't need to be an experienced flower arranger, as guidance will be given. (Nor do you have to provide your own flowers!)



If you would like to help, please contact either Sally or Joy:

Sally Quinn 741770 sallyquinn60@googlemail.com

Joy Orritt 741672 mumisbest1@hotmail.co.uk

CHANTRY TEA GARDENS

Near Kilve Beach

Morning Coffee, Lunches,
Afternoon Teas, Home-made Cakes
and Ice Creams

Nick and Jacqui Dawe

01278 741457

chantry_cottage@hotmail.com



NEIL COBB GENERAL BUILDER

EXTENSIONS
BATHROOMS
ROOFING
KITCHENS
BRICKWORK
STONE WORK



FREE ESTIMATES

01278 425740 07753620961

AN EVENTFUL MONTH

Phil Quinn was repairing the roof over the downstairs loo on 7 April when his ladder slipped away from him. As he fell, his head unfortunately struck a metal boot-scraper, leaving him unconscious for a few minutes, and resulting in a bleed on the brain.

Due to the swift intervention of all the medical services, Phil is expected to make a full recovery within a year.

Phil and Caron wish to thank all the residents of Kilve who sent kind wishes and gave support at a time when he felt extremely vulnerable.

Phil is one of Kilve's beekeepers, but while he was recovering he was unable to play a full role in looking after his hives. During this period Caron found that her beekeeping knowledge and experience grew dramatically, especially when one of their colonies swarmed unexpectedly a couple of weeks after Phil's accident. This has inspired her to contribute the following article. JK

SWARMING BEES

Sometime between April and mid-July a sizable portion of a strong and healthy honeybee colony, including the queen bee, may decide to vacate the hive in a swarm and look for a new nest. They leave behind the means for the remaining bees to rear a new queen and build up strength. If you're lucky, the swarm will find a nearby branch or bush in your garden, and this makes it a lot easier to retrieve using a cardboard box, cotton sheet, smoker, secateurs, spare nucleus box and, most importantly, patience. As long as the queen is present when you do the rehiving, the rest of the swarming bees will follow.

Swarming is a natural occurrence in the life cycle of a honeybee colony, and the bees tend to be very good-tempered during this amazing process.

Caron Quinn



Phil (foreground) and fellow beekeeper Neil Wellum retrieving the swarm.

ALAN MANCHIP

NICEIC Approved Electrical Contractor
Domestic Commercial Industrial Agricultural
Part P Domestic Installer Inspecting and Testing
Portable appliance testing
REFRIGERATION and AIR CONDITIONING
Design Supply Install Maintain

24 HOUR EMERGENCY CALL OUT

01278 733536

Inwood farm Nether Stowey
E mail office@alanmanchip.co.uk



Andy Reeves

General Handyman

I work by the hour or by estimates. I have over 16 years experience since retiring from my full time work. I have personal liability insurance and a Henry vacuum to clear up after myself.

07971 874839 andrewree@gmail.com

Seasoned logs for sale

ROBIN PARKER TREE SERVICES

All aspects of tree work undertaken

Felling, dismantling, pruning
Woodland maintenance
Garden maintenance
Hedge trimming
Logs and firewood for sale

01984 568047



LAKESIDE CARPENTRY

Custom ~ Design ~ Build

MYLES JONES

07503 312961

lakesidecarpentry@hotmail.com

ALL ASPECTS OF CARPENTRY & JOINERY
KITCHENS
FITTED WARDROBES
WINDOWS & DOORS
RENOVATIONS & RESTORATION



Tracy Wint SOFT FURNISHINGS

Having spent hundreds or even thousands on your decor, why settle for ready made or only a near match when it comes to dressing your beautiful home?

A complete, fast, friendly and personal service with quality second to none... and at a price that will undoubtedly surprise.

For your made to measure curtains, blinds or other soft furnishings simply call an expert.

TRACY WINT
SOFT FURNISHINGS
01278 732734

tracywint@btinternet.com

Roman Blinds a speciality!



CHIROPODIST

Grace Brown

M Inst CH P Reg no. Ch23926

FREE CONSULTATIONS

Nail Cutting & Filing. Hard skin & Thickened Nails
Corn & Callus Removal. Ingrowing Toe Nails
Diabetic Foot Care Advice. General Foot Health

Full Disabled Access

East Street Cannington TA5 2HJ

01278 651251

www.browns-hairandbeauty.co.uk

BROWNS Hair & Beauty

Ladies, Gents & Children
Modern & Friendly Environment
Gift Vouchers Available
Full Disabled Access

East Street Cannington TA5 2HJ

01278 651251

www.browns-hairandbeauty.co.uk

VILLAGE HALL NEWS

from Sarah Hayward

AGM and New Committee

Thank you to everyone who came along to the AGM — it was a great turnout. The minutes from the AGM will be on the village website eventually. But the most important news is that a new committee was formed. First of all Tony Mudge has decided to stand down as Chair and we would like to thank him for all that he has done. Elizabeth Grigg, who stepped into the breach, has agreed to carry on as Chair this year — as long as we don't abandon her! Ailsa Robbins is carrying on her good work as Treasurer and Claire Heather as secretary. Vice-Chair will be agreed at the next meeting. Other roles have been taken up as follows:

Maintenance: Barry Whitehead and Brian Ward

Bookings: Frances Mayor

Housekeeping: TBA

Events / lunch club / first aid: Kate Lindley

Events support: Kath Cook

Policies and publicity: Sarah Hayward with support from Ailsa.

100 Club

The winners for April were:

1st: Brian Mundy

2nd: Heather Blackley

If you would like to join the club please contact us — the more members the bigger the prize and the funds raised!

Kilve Open Gardens/Art and Craft sale, Saturday 2 July 10am to 4pm

Please contact the village hall team if you would like to be one of our open gardens as soon as possible — we'd love to see as many gardens as possible — 'cos we are nosy! To book a table to show and sell your artistic and crafty endeavours for £5 per table please get in touch. Garden tour guides from the Village Hall from 10am.

Reminder: 2023 Kilve Calendar Scenes and characters of Kilve Photograph Competition

Closing date for submissions: Saturday 1 October

Photographs (non-returnable) in envelopes labelled Calendar Competition to Village Hall Post Box, Village Stores, or any member of the committee, name and contact details on reverse; by submitting the photograph you agree to publication by the village hall. Please keep a digital copy for publication in the event of winning a place in the calendar.

Judging by village members at the Annual Cheese and Wine evening on Friday 7 October

Calendars will be for sale from the end of October; pre-orders would be much appreciated.

Watch this space for a cream tea, films in the autumn, bingo and more. If **you** have any ideas or requests, please let us know.

For more information and tickets etc. contact: Ailsa (01278 741609), or kvh@hayward.uk.net

To book the hall: kvhbookings@gmail.com (forms are here: <https://kilvevillage.uk/about-kilve/village-hall/>)

Diary dates are now on the back page.

GENTLEMEN'S LUNCH

The next gentlemen's lunch is on Tuesday 7 June at The Hood, at 12.30 for 1pm.

To book, please contact Arthur on 01278 741429 or Art_1948@yahoo.co.uk

TWENTY FIVE YEARS AGO

From Issue 101 June 1997

Peter Hares was in training to take part in the London to Brighton Cycle Race to raise money for the British Heart Foundation.

And the Parish Council was making strong representations to the district and county councils on the grounds that the construction of Millands Lane was seen as imposing "an urban road into a rural setting".

this month
25
years ago



FORGET-ME-NOT CAFE

Church Rooms, Castle Street, Stogursey
Every other Wednesday 10.30 until 12.00

We recently enjoyed a fun morning with the talented Stogursey Strummers ukulele group. They played a variety of tunes from pop to country! Everyone sang and played instruments! Hopefully the Strummers will be back again soon.

Ewen Huffman, the HPC Chaplain, came along for coffee. EDF very kindly donated lots of tombola prizes for the Jubilee Fete Tombola, so a big THANK YOU to them. This will enable us to raise money to have a trip out this summer.

SUMMER DATES

Wednesday 8 June
Wednesday 22 June
Wednesday 6 July
Wednesday 20 July
Wednesday 3 August
Wednesday 17 August
Wednesday 31 August

Forget-Me-Not Cafés provide support, companionship and a warm welcome to those who are recognising issues with their memory, as well as their carers, family, and friends.

All are welcome to come along even if just for a cuppa and a chat. There are a variety of activities such as music, singing, arts and crafts, quizzes.

For more information please contact:

Helen: 01278 734818 – cuttellhelen@gmail.com

Rose: 07507 374234

DIARY DATES

Sat 28 May 10.30am — 12 noon Coffee Morning (Coffee & Cake), Plant Sale and Table Top Sale (table hire £3) — sell your unwanted gifts, crafts, jams, pickles etc. Set-up time for sale goods 9.30, KVH

Thurs 2 June 5pm Jubilee Cricket Match, Kilve CC
9.45pm Lighting of the Beacon, at the beach

Fri 3 June Afternoon Children's events, KVH
Evening Cheese and Wine Evening, KVH

Sat 4 June 4pm Floral Cascade with tea and cake
5pm Songs of Praise, both at St Mary's Church

Sun 5 June 10am — 3pm Children's activities, Kilve Court
12 noon The Big Lunch Kilve Court

Tues 7 June 12.30pm Gentlemen's Lunch, Hood Arms

Wed 15 June 12.30pm Lunch club, all welcome. £7 for a 2 course lunch. Tickets from Pat Woolley (01278 741157) KVH

Sat 18 June 10am Kilve Annual Village Meeting, KVH
10am — 4pm Family Open Day, Kilve Court
10am — 12 noon Coffee Morning, EQVH

Tues 21 June 7.30pm Holford Gardeners Group, Holford VH

Sat 25 June 10.30am — 12 noon Coffee Morning, KVH

Mon 27 June 2pm Quantock u3a, Holford VH

Thur 30 June 12 noon Ladies Who Lunch, Hood Arms

Sat 2 July 10am — 4pm Art & Crafts, KVH; Open Gardens, Various locations

Tues 12 July Cream Tea in aid of air Ambulance, KVH

Sat 16 July Annual Gin Tasting Evening, KVH

SHORT MAT BOWLS

Every Monday evening at 7pm

Kilve Village Hall

Do come and join us!

CHEAPER PARKING

Did you know that you can buy a Somerset West and Taunton parking permit that will allow you to park in most of the car parks in Williton, Watchet, Minehead, Dunster and Dulverton without further charge?

The shoppers' short stay permit costs £40 for a year and allows you to park for two hours a day. This saves you having to scabble about finding coins for the meter, and at a minimum of £1.10 a time you can save quite a lot of money over the year. There are various ways to activate the free parking on each occasion; I find texting the easiest, as you don't need an internet signal, but you can use the parking app if you prefer, or make a phone call.

Go to www.somersetwestandtaunton.gov.uk and search for parking permits. Setting up an account is not too difficult, and the people at the end of the help line are very good at sorting out your problems if you have any. (I speak from experience...)

MEMORIES OF OTHER JUBILEES

Pat Woolley has reminded me of various Kilve memorials of earlier significant royal dates.

1897 Queen Victoria's Diamond Jubilee, celebrated with the clock on the Village Hall.



1953 The oak tree by the phone box was donated by Mrs Cooke-Hurle of Kilve Court, and planted by Sam Thorne, to commemorate Queen Elizabeth II's Coronation.

1977 Queen Elizabeth II's Silver Jubilee was marked by the planting of the cotoneaster tree outside the Village Hall.



2002 A commemorative booklet was produced to mark Queen Elizabeth II's Golden Jubilee, but as far as I can find, there was no physical memorial.

2012 Queen Elizabeth II's Diamond Jubilee was celebrated by the redevelopment of the Village Hall garden to create an accessible social space with bee- and insect-friendly planting, with donations of plants from local residents and HRH The Prince of Wales.



2022 I believe that the new permissive path between the village and Rowditch Lane will be named to commemorate the Platinum Jubilee; might it be worthwhile planting a tree as well?

After a lapse of 2 years
 we are pleased to announce that the

GIN TASTING

Evening

has been arranged for

SATURDAY 16 JULY

Book your tickets now!

£20 including finger buffet

from

Robbie 741594 or Mark 741095

(Wine ticket also available)

In aid of St Mary's Kilve

Please note the new date.