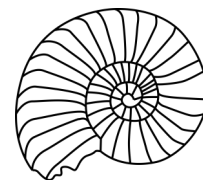


---

---

# KILVE NEWS



---

Issue 355

April 2022

---

---

## EDITORIAL

Is spring on its way at last? As I write this, the sun is shining, the birds are singing, the bees are taking pollen in and the fields are becoming less muddy for dog-walking. Let's hope things do finally improve after what has been a very difficult month. The aftermath of the storms, the pandemic which seems reluctant to end, and now the tragic situation in Ukraine are all in the background whatever we are doing.

Even though we can't influence events, there are things we can do, such as helping neighbours out. More recently, we have donated money and necessary supplies for the people in Ukraine, and you can read more about this below.

Other items this month include success at the National Exhibition Centre in Birmingham, an intriguing article about The Hut in Sea Lane, and details of an interesting new competition from the Village Hall. There is also a notice of a defibrillator training session. I hope you enjoy reading it all. Don't forget, I am always glad to receive your contributions.

And finally, if you don't already subscribe to the Village Hall 100 Club, why not use the form on the back page to join? The hall will benefit from your subscription and you might win a prize.

Jenny

**Contact the Editor on 01278 741663**

**e-mail [jakent@btinternet.com](mailto:jakent@btinternet.com)**

**or text on 07745 805006**

## WELCOME

A busy month in Putsham Mead! A very special welcome to Emily Susan Ann Leggett, who was born on 23 February. Many congratulations to Anneliese and Sam. I'm sure Dylan will enjoy having a new playmate.

And we are delighted to welcome Jackie and Steve Skinner and their Italian Greyhound Maisie, who have moved into no 8.

We hope that you will all have a long and happy time in Kilve.

---

## UKRAINE APPEAL

Pam Cuff has forwarded £472 to The Red Cross from the church collections and the donation boxes in the shop and the pub. Considering that the boxes were there for less than a week, this is a remarkable total.

In addition, Penny Jordan, Alan Keen and Roger Cuff took 3 car loads of donated items to Taunton to be sent to Ukraine.



## NEW BEGINNINGS — KILVE'S EASTER STORY?

In 1969 Phyllis Lemon planted a tree in the churchyard in memory of her first husband, Arthur Nuttall, and her parents. The tree was a *Cercis siliquastrum*, which is notable for its beautiful pink blossom early in the year, before any leaves arrive. Its common name is the Judas tree, as it was believed that Judas Iscariot hanged himself on a tree of this type.

A year ago the tree was found to have a large split in it and was deemed to be dangerous, so it was decided to coppice it in the hope that it would regrow. Bruce Eyley is a master wood-turner and he has made an outstanding candlestick from the wood.



This now has pride of place in the church window and at Easter will hold the Paschal candle (the first candle to be lit, representing the light of Christ as a symbol of life dispelling the darkness of death). The Easter Sunday service is Holy Communion at 9.30am.

Happily, the Judas tree in the churchyard is still growing, as is its sister tree in the garden of Sunnyside in Millands Lane, which Phyllis also planted.

*Thank you to Phyllis Lemon and Simon Blackley for this story. It has answered the question I regularly asked when walking past Sunnyside — what type of tree would flower in the depths of winter? Now I know. JK*

---

## TERRY WILLIAMS

It is with much sadness that we have to record the passing of Terry Williams.

Terry was a long time participant in village life. Many of our older residents will recall the badminton evenings, which he and his late wife Jean used to hold every week in the Village Hall, and friends and neighbours will have very happy memories of the yearly staged 'Sunray Olympics', when he and Jean used to open their garden and put on a splendid array of games for various teams to participate in.

Terry enjoyed playing bridge and painting. A lifelong passion of his was for the game of golf and although he had to forgo playing in recent years he was both the founder and President of the Kilve Golf Klub.

On behalf of the village we would like to extend much sympathy to his family and many friends.

### KITCHEN & BATHROOM FEATURES

Find us on <https://www.facebook.com/kandbfeatures>

#### SUPPLY & FIT OR SUPPLY ONLY

Kitchens, Bathrooms, En-suites, Plumbing  
Floor & Wall Tiling and Electrics  
Installation to the highest standard.  
Fully insured & Free Quotations  
Quality, at prices you can afford  
Family business with over 30 years' experience.

Home: 01278 651089

Mobile: 07894140533

Email: [ridgmentc@yahoo.co.uk](mailto:ridgmentc@yahoo.co.uk)

### Kilve's Renowned 'Mr VIKTOR'

Reliable Carpenter and Odd Job Man  
No job too small



Call VIKTOR  
ON 07902327701

### DATA CAB TAXIS

Doniford Watchet  
4 and 7 seater taxis

We can also offer Executive Airport Transfers

01984 639141



### BIDDISCOMBES of BRIDGWATER

Carpets & Furniture  
Your local Experts  
BEDS UPHOLSTERY  
FURNITURE



Quality Service Value

01278 422364

[www.biddiscombes.co.uk](http://www.biddiscombes.co.uk)

### WEST QUANTOXHEAD MOTORS

For all your motoring needs

SERVICING & M.O.T.

Cars Vans 4x4s Trailers

TYRES A/C DIAGNOSTICS

COURTESY CAR



CALL BEN

for friendly advice & free quotes

01984 632437

or 07799 584700

### PARKE PLUMBING AND HEATING

Professional & reliable Plumber  
Qualified in oil, gas and LPG  
Boiler servicing, installation and  
breakdown repairs  
Bathrooms, radiators & system upgrades

01278 741723

07860 553704

[parkeph@gmail.com](mailto:parkeph@gmail.com)

### Quantock Lodge Pool

Opening times 2022

Sunday 10.30 am to 12.30 pm Family swim

Monday 6.30 to 8.15 pm Lane swim

Tuesday 7.30 to 10 am Adults and toddlers swim

Wednesday 7.30 to 10 am Adults and toddlers

Thursday 7.30 to 10 am Adults and toddlers

Thursday 6.30 to 8.15 pm Lane swim

Quantock Leisure Ltd.

Over Stowey

01278 733375

[info@quantocklodge.co.uk](mailto:info@quantocklodge.co.uk)



Jewellery repairs and designs by Stephen Howard

Commissions  
Melts and remakes  
Stone replacements  
Restoration  
Rhodium plating  
Cleaning  
FREE ESTIMATES

Find me on Facebook

### The Goldbeach Studio

East Quantoxhead, by appointment. 07790 467536 | 01278 741570  
[goldbeach@btinternet.com](mailto:goldbeach@btinternet.com) | [www.thegoldbeachstudio.com](http://www.thegoldbeachstudio.com)



## PROPOSED PLATINUM JUBILEE CELEBRATIONS JUNE 2022

Last month we told you about the proposed timetable of events which are being planned for the village in celebration of the Queen's Platinum Jubilee and in the May edition of Kilve News we shall publish a full and detailed list of all the arrangements.

In the meantime we need to make preparations for the 'BIG LUNCH' which is planned to take place at Kilve Court on

### SUNDAY 5 JUNE

Obviously we need to know exactly how many people need to be catered for and, to this end, tickets for those who wish to attend the lunch will shortly be available.

The proposed menu for the lunch is:



Coronation chicken with apricots  
Honey roast ham  
Vegetarian quiche

Homemade coleslaw  
Tomato & basil salad  
Mixed green salad  
Hot new potatoes

Pavlova with cream & seasonal fruit  
Lemon cheesecake  
Fruit salad

A nominal charge of £2 (**or your donation!**) per adult will be made. Children's tickets are free of any charge but must be applied for.

**TICKETS will be on sale at the monthly Village Hall Coffee Mornings on Saturdays 26 March and 30 April 30.**

When collecting and paying for your tickets would you please tell us three things:

1. Any vegetarian or special dietary requests.
2. Whether your household will be entering the Scarecrow Competition.
3. Whether you might wish to avail yourselves of the evening barbecue being organised at the Cricket Club on Thursday 2 June (normal prices apply).

As you will have seen in last month's Kilve News the day at Kilve Court will include a full programme of children's activities (with a few special ones for adults to join in!).

These will start at 10 am and end at 3 pm with a break for everyone to join in for lunch from 12.30 to 2 pm.

May we once again remind you that we are looking for some kind-hearted businesses and individuals who would be happy to make a donation to our funds (which will help out with the expenses which will be incurred), and/or perhaps a raffle prize. If you would like to be included, you are asked to contact Sheila Collins, who will give you all the details. Although specific amounts will not be divulged, a full list of donors will be acknowledged in our May update.

AND very importantly:

We are seeking volunteers to help out with various aspects of the celebrations, such as help with children's activities, making cakes for the Saturday afternoon tea, and some help at the Big Lunch on the Sunday.

YOUR helping hand would be so much appreciated and if you would be kind enough to contact one of the organising committee members, we can make a note of your kind offer and act accordingly.



### A JUBILEE VILLAGE SCARECROW COMPETITION

A unique chance for every household to join a fun village project with a

**FIFTY POUND**

**Prize for the winners!**

### YOUR ORGANISING COMMITTEE

Sheila Collins (741077)  
Alison and Bruce Eyley (741317)  
Simon Blackley (741549)  
Robbie Rutt (741594)

**Working to give you all an enjoyable and memorable Platinum Jubilee Celebration!**

Any suggestions or ideas are always welcome.





### CHRIS GREEN MOWERS

Specialising in repairs and servicing of lawn mowers and other garden machinery.

Suppliers of spares and new machines  
A collection and delivery service available

07714 281188

Email [chrisgreenmowers@hotmail.co.uk](mailto:chrisgreenmowers@hotmail.co.uk)  
Wibble Farm, West Quantoxhead

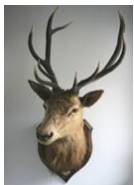
### WOODLOUSE CONSERVATION

Recognised specialists in  
Lime Rendering,  
Lime Plastering  
Building Restoration  
and Conservation Projects



01984 629131 07788 810576

[www.woodlouseconservation.co.uk](http://www.woodlouseconservation.co.uk)



### EXMOOR PLUMBING

Reliable plumber  
No job too small

01984 639629

07970 632114

Radiators Cylinders Tanks Ball valves  
Bathroom suites Taps Washers Showers  
Soil pipes Waste pipes Gutters  
Drain clearance

**PLUMBING WORK COVERED**



### Pardlestone Farm

We would love to welcome your friends and family to Pardlestone Farm in Kilve where we offer bed and breakfast and a self-catering cottage – within walking distance of The Hood!

[www.pardlestonefarm.co.uk](http://www.pardlestonefarm.co.uk)

Please book online or call Mark or Ann on  
01278 256629, 07721 763993 or email

[enquiries@pardlestonefarm.co.uk](mailto:enquiries@pardlestonefarm.co.uk)

Pardlestone Farm, Pardlestone Lane, Kilve TA5 1SQ

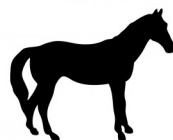
Kelvin Henson  
Painter and Decorator

Internal and External  
Old, new and business premises  
Property Maintenance

35 YEARS EXPERIENCE



01278 732949 07817 641645



### Purple Horse

07760 758 626

**Embroidery, Rug Cleaning & Repairs**

[sales@purplehorse.org](mailto:sales@purplehorse.org)

\*Personalised Embroidery\*

(Teamwear - Workwear - Equestrian)

\*Professional Rug Laundry and Repairs Service\*

\*Free Collections Available\*

\*Drop off at Williton Pet & Equine\*

### Williton Pet & Equine

Unit 11, Roughmoor Enterprise Centre  
Williton TA4 4AT

01984 631508

[www.willitonpetcare.com](http://www.willitonpetcare.com)



Pet \* Smallholder \* Equestrian  
Clothing for Horse & Rider  
Local Delivery Available

### RUSSELL H BRYANT

PROPERTY MAINTENANCE & REPAIR  
TO DOMESTIC, AGRICULTURAL &  
EQUINE PROPERTIES  
Inc. PLUMBING REPAIRS ROOFING AND  
PLASTERING

EST 1988

L.C.G.I. & A.C.I.O.B. QUALIFIED  
FREE NO OBLIGATION QUOTES

01278 741054 07787371741

email [russellhbryant@yahoo.co.uk](mailto:russellhbryant@yahoo.co.uk)

## KILVE READING GROUP

from Sue Hares

*Small Things Like These* proved to be a little gem of a book. Short, succinct and to the point. However it carried a mighty punch.

Written by Claire Keegan and dedicated to all the women and children who suffered in Ireland's Magdalen laundries, it was beautifully written, evoking the wonderful Irish vernacular. It was heart wrenching and emotional, but at the same time a very enjoyable read. An excellent Reading Group choice.

The Group remains at full capacity.



## KILVE FLORAL CASCADE

(Sponsored by Kilve News)

With enthusiast help from many willing hands, we have started sewing flowers onto the netting and our cascade is really taking shape.

Sewing sessions are advertised in advance and at present they are taking place in the village hall. We are indebted to the Committee for gifting us this generous help.

We intend to move the cascade into Pardlestone Farmhouse's barn as soon as the weather warms up!

Please join us if you can. It is a lovely, chatty couple of hours with hot drinks and cake provided! Only very basic sewing skills are required. Non-sewers are also very welcome. This is our village project and we want everyone to feel involved.

Thank you for your continued support.

Claire Walton 01278 741095

Pat Woolley 01278 741157



WOW just WOW! The LWL meal for Feb (that was moved to 3 March), was brilliant! Massive thanks to all at The Hood – you really outdid yourselves!! Such delicious food and impeccable service as usual.

The next two LWL meals will be on Thurs 31 March and Thursday 28 April. If you would like to join us, please contact me.

Kelly (741149)

[Kelly78stone@hotmail.co.uk](mailto:Kelly78stone@hotmail.co.uk)

### EASTER COFFEE MORNING

Café/Bric-brac/Books

Saturday 16 April 10-12 noon

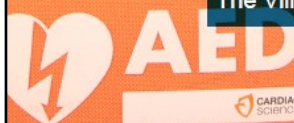
East Quantoxhead Village Hall



## Defibrillator Awareness Session

Friday 29th April, 2pm

The Village Hall, Kilve, TA5 1EA



Contact

Elizabeth Grigg  
01278 741645

Free attendance  
EVERYONE IS WELCOME

## HOLFORD GARDENERS GROUP



### *My Way of Growing Fuschias*

a practical talk and demonstration

by Peter Holloway

Holford and District Village Hall

Tuesday 19 April 7.30pm

Members £1.00 Visitors £2.00

A warm welcome to all

## A NEW CHAMPION!



*Hi to all my friends in Kilve. My mum took me to Crufts again this year.*

*It was great to see all my bearded buddies again. Once again I had to have a bit of a wash and try to stay clean all day!*

*However, I really put on a show for my mum. I won my class in Limit and went on to win best bitch of the breed. This win has now given me my 3rd championship certificate which now makes me a Champion. I am now officially called Champion Rembrandt After Eight Delite (bit posh for my liking!). My mum was really pleased, even producing a few tears of joy.*

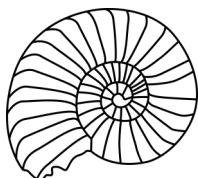
*You probably won't see me looking glamorous much cos I'm now looking forward to getting back to normal and getting filthy! Ha! Ha!*

*Lots of licks to everyone,*

*Love from  
Gracie xxx*

*Mum and Dad are of course Julie and Bob Turner, of Millands Lane. Gracie, now four and a half, is not their first Champion; they achieved the same feat with Hattie, Gracie's grandmother. Hattie will be 15 in June. She won best of breed at Crufts 11 years ago; consequently she went through into the pastoral group and made the cut into the last seven. A very distinguished family!*

JK



## VILLAGE AGENT NEWS

from Izzy Sylvester

Spring is in the air, and we are all starting to venture out as the weather improves and now all restrictions have been lifted.

### Get Outside in Somerset

It has been a little damp in Somerset, but good news is the start of spring is on its way! Bringing longer and lighter days, milder weather and hopefully... a much-needed dose of vitamin D. Get ready for spring adventures and outdoor fun with *Get Outside in Somerset*.

From activities to events and challenges, you can find a roundup of our latest stories and all the great stuff happening near you at [www.getoutsideinsomerset.co.uk](http://www.getoutsideinsomerset.co.uk)

Do you want to find things to do in Somerset this spring, or find activities for all abilities, or need some help setting some goals and intentions? We have lots of interesting blogs for you, along with opportunities to volunteer and ways to be active. All information can be found on the website or on our social media channels. Take a look today at [www.getoutsideinsomerset.co.uk/news](http://www.getoutsideinsomerset.co.uk/news)

### Talking Cafés

Many of our Talking Cafés have returned with no need to book or make an appointment.

To find your local Talking Café visit: <https://somersetagents.org/talking-cafes/>

Or watch our Talking Cafés LIVE on Facebook <https://somersetagents.org/talking-cafes/talking-cafe-live-sessions/> every week we have guests talking, answering questions.

We have over 300 recordings available to watch back so you never miss out. Visit: <https://www.youtube.com/channel/UC5goIPHD91Ie4VDI5NMJdrQ>

### Could you REHOME your old phone?

By donating an unused phone to us, YOU can help reduce loneliness and isolation for people in West Somerset, as well as help in their everyday lives such as doing their shopping online and staying connected to friends and family. Could you REHOME your old phone?

We will:

- \* refurbish the phone
- \* remove any personal data
- \* provide the new owner with a SIM card
- \* support them to use the phone with video tutorials and install apps that will help them to keep in touch with their loved ones

Check your 'bits and bobs' drawer where old devices lurk waiting to be loved again! To donate, please contact your local Village Agents Izzy and Ruth.

For free confidential advice and support please phone Izzy Sylvester on 07931 018045 or email [izzy@somersetcc.org.uk](mailto:izzy@somersetcc.org.uk) or Ruth Wake on 07947901240 or [ruthw@somersetcc.org.uk](mailto:ruthw@somersetcc.org.uk).



Community Council for Somerset (CCS), Viney Court, Viney Street, Taunton, TA1 3FB

Tel: 01823 331 222 Web: [www.somersetagents.org](http://www.somersetagents.org)  
Email: [info@somersetcc.org.uk](mailto:info@somersetcc.org.uk)

## THE STORY OF THE HUT

from Graham Keating



Walking down Sea Lane, you'll probably have noticed an enchanting wooden building near the junction with Hilltop Lane and perhaps wondered about it.

The Hut has been owned by the same family for 86 years, though this is the second building to bear the name. One of its owners, John Derrick, kindly shared some photos and stories with me recently and I thought they would be of wider interest.

The original Hut was a WW1 Nissen Hut, dismantled and transported from the Norton Fitzwarren Army camp in 1921 and, 15 years later, John's uncle, Mervyn Tyrrell, bought it from Minehead Scouts for the princely sum of £50. Mervyn was killed when his ship was shelled in the Straits of Malacca during the evacuation of Singapore, and ownership of The Hut then passed to John's grandparents, Harold and Edith Tyrrell. They would travel to Kilve by bus from their home in Bristol for family holidays, the start of a tradition that has continued over five generations.

In 1940 The Hut was requisitioned by the government and a family of London evacuees lived in it until 1944; moving to sleepy Kilve must have come as quite a culture shock for them, and the poorly insulated building would have been cold and damp in winter.

John's earliest holiday memories of Kilve are from the age of 4, in 1948, when the freedom to play on the beach was a wonderful change from normal life in Bristol. Walking up to Barker's Stores on the A39 (now The Old Post Office) for an ice cream was also a special treat.

John remembers that the paraffin cooking range in The Hut caused terrible condensation in cooler weather, so in 1952 his grandfather built a separate cookhouse, just outside the front door.

By the 1980's, the much-loved Nissen Hut was at the end of its life so John and his sister Janet, with their respective families, embarked on its replacement.

Today, The Hut is still much loved by John and Janet's extended family and its ownership has now passed to a family trust to ensure that it will be enjoyed by many generations to come.



*The rear view of the original Hut - photo from the 1970's.*



*John with sister Janet and cousins Andrew and Rosemary c.1948 when you could safely stand in the road to take a photo!*



*The cookhouse to the left and the outside toilet (known to the family as 'The Loo with the View' because the door facing the stream would habitually be left open) to the right.*



*The kit building under construction in 1988 - it was one of several designs drawn up as holiday homes for the Forestry Commission.*

**ALAN MANCHIP**

NICEIC Approved Electrical Contractor  
Domestic Commercial Industrial Agricultural  
Part P Domestic Installer Inspecting and Testing  
Portable appliance testing  
REFRIGERATION and AIR CONDITIONING  
Design Supply Install Maintain

24 HOUR EMERGENCY CALL OUT

01278 733536

Inwood farm Nether Stowey  
E mail office@alanmanchip.co.uk



**GOUDE GARDENING**

**Hedges, Lawns & Tree Care  
Weeding & Planting  
Garden Clearance**

Call Paul on  
01984 631899  
07804 828193  
goudegardening@yahoo.com



**ROBIN PARKER  
TREE SERVICES**

All aspects of tree work undertaken  
Felling, dismantling, pruning.  
Woodland maintenance  
Garden maintenance  
Hedge trimming  
Logs and firewood for sale



01984 568047

*Tracy Wint*  
SOFT FURNISHINGS

Having spent hundreds or even thousands on your decor, why settle for ready made or only a near match when it comes to dressing your beautiful home?

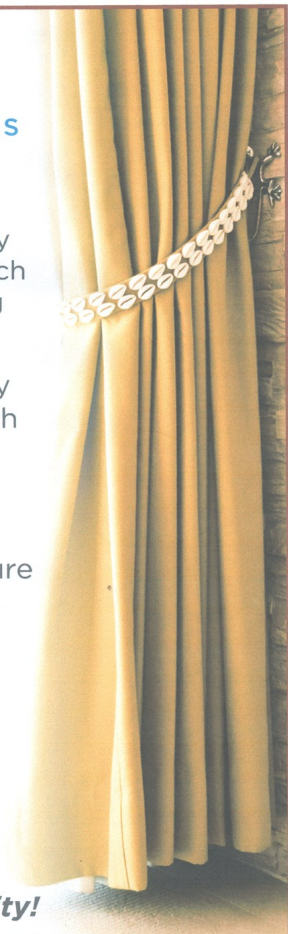
A complete, fast, friendly and personal service with quality second to none... and at a price that will undoubtedly surprise.

For your made to measure curtains, blinds or other soft furnishings simply call an expert.

**TRACY WINT  
SOFT FURNISHINGS  
01278 732734**

tracywint@btinternet.com

*Roman Blinds a speciality!*



**LAKESIDE CARPENTRY**

*Custom ~ Design ~ Build*

**MYLES JONES**

07503 312961

lakesidecarpentry@hotmail.com

ALL ASPECTS OF CARPENTRY & JOINERY  
KITCHENS  
FITTED WARDROBES  
WINDOWS & DOORS  
RENOVATIONS & RESTORATION



**BROWNS**  
Hair & Beauty

Ladies, Gents & Children  
Modern & Friendly Environment  
Gift Vouchers Available  
Full Disabled Access

East Street Cannington TA5 2HJ

01278 651251

[www.browns-hairandbeauty.co.uk](http://www.browns-hairandbeauty.co.uk)

**CHIROPODIST**

*Grace Brown*

M Inst CH P Reg no. Ch23926

**FREE CONSULTATIONS**

Nail Cutting & Filing. Hard skin & Thickened Nails  
Corn & Callus Removal. Ingrowing Toe Nails  
Diabetic Foot Care Advice. General Foot Health

**Full Disabled Access**

East Street Cannington TA5 2HJ

01278 651251

[www.browns-hairandbeauty.co.uk](http://www.browns-hairandbeauty.co.uk)



## VILLAGE HALL NEWS

### Photograph competition

The Village Hall Committee is introducing a new venture: a photograph competition to produce a 2023 Kilve Calendar showing scenes and characters of Kilve. (Shades of *Countryfile*?)

There will be at least 12 winning prizes of inclusion in the Kilve 2023 calendar.

To enter the competition, you should submit hard copy photographs, with agreement for publication by the village hall, and your name and contact details on the reverse. Please enclose your photographs in an envelope labelled Calendar Competition to the Village Hall Post Box, Village Stores, or any member of the committee.

Please keep your digital copy for publication if you are a winner as your hard copy will be non-returnable.

**Closing date for submission: Saturday 1 October.**

Judging will be by members of the village at the Annual Cheese and Wine evening on Friday 7 October.

Calendars will be for sale from end of October – pre-orders would be much appreciated.

### 100 Club

The 100 Club winners for February were:

1st Kate Allen    2nd Jennie Mundy

100 Club tickets are still available at coffee mornings and from the Village Stores. Please support your Village Hall!

### And finally

Would anybody be interested in running and/or taking part in a **CHESS CLUB** at the hall?

If so, please would you contact Claire Heather 01278 741654.

### Diary dates

**26 March** Coffee Morning and **Easter Bake Off competition**

- ◆ Classes for Cake and Bread making.
- ◆ Entry fees Adults £2 Children £1.
- ◆ 1<sup>st</sup> & 2<sup>nd</sup> prizes for both Children and Adults.
- ◆ All entries to be in Village Hall Denovan room by 10.15 am for judging.

**22 April** Film Night – *The Last Bus* starring Timothy Spall & Phyllis Logan

**30 April** AGM 10.am followed at 10.30 by Coffee and Cakes

**28 May** Coffee Morning (Coffee & Cake), Plant Sale and Table Top Sale (table hire £3) — sell your unwanted gifts, crafts, jams, pickles etc

**3 June — Jubilee Weekend** Friday afternoon Children's events; Friday evening Cheese and Wine Evening hosted by Hall Committee

**25 June** Coffee Morning

**2 July** Open Gardens/ Art & Crafts in Village Hall

*Please, we still need more people willing to open their gardens 10 – 4.*

- ◆ Craft/Art tables £5
- ◆ Pictures for sale – 10% sale price
- ◆ General pictures/photographs for show — no charge
- ◆ Artists to supply own display medium

Further information from Ailsa (01278 741609) or members of the committee.

### GENTLEMEN'S LUNCH

The next gentlemen's lunch is on Tuesday 5 April at The Hood, at 12.30 for 1pm.

To book, please contact Arthur on 01278 741429 or [Art\\_1948@yahoo.co.uk](mailto:Art_1948@yahoo.co.uk)

### NEIL COBB GENERAL BUILDER

EXTENSIONS  
BATHROOMS  
ROOFING  
KITCHENS  
BRICKWORK  
STONE WORK



FREE ESTIMATES  
01278 425740    07753620961

### OUR NEXT ISSUE

Our next issue will be for May.

Please send contributions for the 356th edition to the Editor (contact details on page 1) or the Village Stores (marked Kilve News).



Please note

**NO LATER THAN 15 APRIL**

If you have reports, adverts or contributions ready before the deadline please let us have them as soon as possible. It greatly helps having them well in advance of the 15th.

### TWENTY FIVE YEARS AGO

From Issue 99 April 1997

Engineers for Channel 5, which was just starting to broadcast, visited the village to retune video recorders (remember them?). Televisions tuned to the Mendip station were able to receive the new channel, but those who relied on the Kilve booster station were told that they might have to wait for some considerable time before the Channel 5 signal was available.





### THE HOOD ARMS, KILVE

#### Opening Times

#### BAR

Tuesday to Saturday:  
12 noon to 3 pm 6pm till close  
Sunday: 12 noon to 3pm

#### FOOD SERVICE

(Reservations recommended)  
Tuesday to Saturday:  
12 noon to 2pm 6pm to 9pm  
Sunday: 12 noon to 3pm

Closed Mondays

01278 741114  
www.thehoodarms.co.uk

### Kilve Stores and Post Office

01278 741214

[www.kilvestores.co.uk](http://www.kilvestores.co.uk)

[mfirst@hotmail.com](mailto:mfirst@hotmail.com)

Free, local home delivery service  
Fresh bakery bread delivered daily

Fruit & veg

Over 65 different wines in stock

Flo Gas stockist

Logs & kindling

Compost available all year

Special wine & beer offers

Brazier Smokeless Coal Stockist

**MONTHLY PREMIER SPECIAL OFFERS and MEGA DEALS**

**POST OFFICE – PAY POINT NATIONAL LOTTERY**

Newspaper deliveries to Holford & Hill Top



### M H KELLAWAY

#### Chimney Sweep

Aga & Rayburn Servicing

Wood burners serviced and installed

01278 741572



KILVE STORES OFFICIAL STOCKIST

Pop into Kilve Stores to view our range of Frenchic Furniture Paint.

We stock a wide range of paints from the Original Artisan Range, the Lazy Range, and the Al Fresco Range along with all the sundry items you need including a variety of waxes, finishing coat, Freshneen brushes, stencils, sugar soap and lots more!

**Pop in and have a look and join the Frenchic Craze!**

Contact us on 01278 741214 or 07766 018847

Facebook: Kilve Stores and Post Office



### Chartered Architect

Specialising in work to historic properties and buildings in sensitive landscape

ALINA WISNICKA MSc Dip Arch RIBA MSc Building Conservation

Drawings for Planning

and Listed Building Consent

Working details and specification

Building Contract Management

Friendly and at reasonable rates



T:01278 741755 m:07870305309 [alina@alinawisnicka.co.uk](mailto:alina@alinawisnicka.co.uk)

### W.W.REFURBISHING

TILING  
SKIMMING  
PAINTING  
Call WALDI

on 07837 918337





## THE LYCH GATE

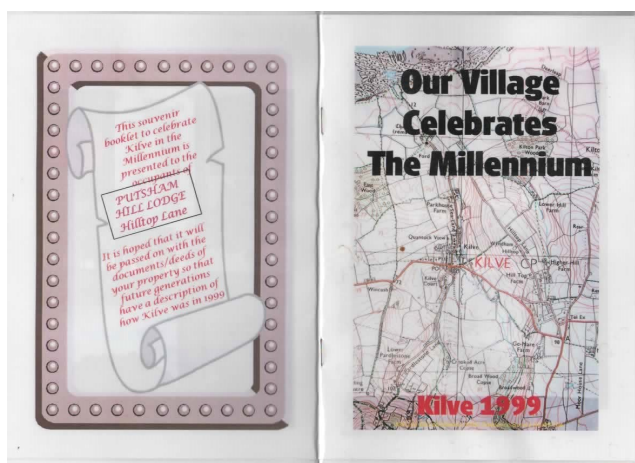
It is excellent news that the church lych gate (Kilve's memorial to the fallen of World War One) has finally been repaired.

St Mary's PCC would again like to express their gratitude to The Fairfield Trust, the family of the late Lou and Marion Burton and the Parish Council for the financial support which enabled this work to be undertaken.

## JEAN MCCORMACK

Some of you who have lived in Kilve a long while may remember Jean, who passed away peacefully on 1 March at her beloved Deanwood in East Sussex.

She moved to Putsham Hill Lodge, Hilltop, with Mac in the early '60s. They were instrumental in producing the Millennium Village record.



Each household should have their own copy.

Jean's niece, Sheila Darling, asked if this remembrance could be put in the Kilve News as she so enjoyed the copies we sent her.

We will miss Jean and our exchange of letters each year.

*Bruce and Alison Eyley*

Don't forget, you can view all the editions of Kilve News plus much more information about the village on the Kilve village website:

**[www.killevillage.co.uk](http://www.killevillage.co.uk)**



## FORGET-ME-NOT CAFE

Church Rooms, Castle Street, Stogursey  
Every other Wednesday 10.30 until 12.00

### SPRING DATES AND EVENTS

- Wed 13 April – Making traditional Easter Bonnets
- Wed 27 April – Singing with Stogursey Ukulele Group
- Wed 11 May – Coffee and chat
- Wed 25 May
- Wed 8 June

Forget-Me-Not Cafés provide support, companionship and a warm welcome to those who are recognising issues with their memory, as well as their carers, family, and friends.

All are welcome to come along even if just for a cuppa and a chat. There are a variety of activities such as music, singing, arts and crafts, quizzes.

For more information please contact:

Helen: 01278 734818 – [cuttelhelen@gmail.com](mailto:cuttelhelen@gmail.com)

Rose: 07507 374234

## BUMBLEBEES ARE BACK!

from Neil Wellum

This is an encouraging sign of spring. Bumblebees are some of the most important insect pollinators. There are about 24 different species of bumblebee in Britain, but the one I have seen most is the buff-tailed bumblebee (*Bombus terrestris*).

The queen is large, some 20mm long. She hibernates alone underground over the winter. From as early as February, she will venture out on finer days to feed and find a new nest site. She is not too fussy and will nest in burrows of former mouse nests, in compost heaps and in underground tunnels in earth banks. When she finds a new nest site, she builds a little pot of nectar to help her survive any bad weather. Then she collects pollen and lays her first eggs in a small cluster. She spreads her body over the eggs and vibrates her wing muscles to keep them warm under her furry coat.

Once the first worker bees emerge, they start to collect pollen and nectar and the queen continues laying. By summer, there may be several hundred workers in the nest and the queen turns her attention to the next generation, laying some eggs that will become male drones and then a few virgin queens. Mating takes place towards the end of summer. The males and workers will die off and only the queens will survive. They leave the nest and look for somewhere to hibernate, sometimes from as early as August. Then it all starts again the following spring.

# THE 100 CLUB NEEDS YOU!

SUPPORT YOUR VILLAGE HALL BY JOINING THE 100 CLUB.  
HALF THE FUNDS RAISED GO TO THE VILLAGE HALL  
AND HALF TO TWO '100 CLUB' CASH PRIZES.

THE COST IS JUST £12 FOR SIX MONTHS.

YOU MAY DROP YOUR MONEY OFF AT KILVE STORES  
IN AN ENVELOPE MARKED 'KILVE VH 100 CLUB'  
(CHEQUES PAYABLE TO KILVE VILLAGE HALL,  
PLEASE INCLUDE YOUR NAME AND TELEPHONE NUMBER).

ALTERNATIVELY, YOU MAY TAKE THE MONEY TO THE VILLAGE HALL COFFEE MORNING ON  
THE LAST SATURDAY OF EACH MONTH, WHERE THE '100 CLUB' DRAW TAKES PLACE, AND  
MEET LOTS OF VERY NICE PEOPLE.

OR, USE THE STANDING ORDER FORM BELOW.

FOR MORE INFORMATION CALL CLAIRE HEATHER ON 01278 741654

THANK YOU

REGISTERED CHARITY 304569

## STANDING ORDER FORM — KILVE VILLAGE HALL 100 CLUB (REGISTERED CHARITY 304569)

PLEASE POST DIRECT TO YOUR BANK OR SET UP VIA ONLINE BANKING USING DETAILS BELOW

To the Bank Manager (name and full address of Bank) .....

I/We hereby authorise and request you to debit my/our account

Name ..... Sort code: ..... Account number: .....

Amount (eg £12/£24): ..... Frequency (6 months membership): half yearly on \_\_\_\_ January and \_\_\_\_ July

Beginning Date: ..... End Date: Until further notice ..... Number of Payments: n/a

And Credit Kilve Village Hall Sort Code 60-03-27 Account Number 53248198

Quoting Reference: ..... 100 Club  
(e.g. Ann Smith 100 Club if £12 paid for one membership or Ann and Andrew Smith 100 Club if £24 paid for two memberships)

Signed: ..... Name in block capitals: ..... Date: .....

Please detach and hand this section to Claire at Coffee Morning or leave at Kilve Stores marked Kilve VH 100 Club, or in Village Hall post box.

To: Kilve VH 100 Club (c/o Claire Heather)

From: ..... Contact Number: .....

Address: .....

I have set up a standing order for ONE/TWO/THREE (delete as appropriate) membership(s) of the Kilve VH 100 Club starting in  
..... (please insert date of commencement).

I agree to you keeping my details in order that I/we may be contacted regarding my/our membership i.e. notification of prize win.

Signed: ..... Name in block capitals: ..... Date: .....