



KILVE NEWS



Issue 352

December 2021

Merry Christmas

EDITORIAL

Christmas is a joyous time and I am rather hoping that despite the on-going pandemic, I can start the festive 'feeling' with this Christmas Edition of Kilve News. We have two pages of Christmas Greetings from villagers who have kindly donated some £510 for the Rare Dementia Group. Enjoy a wonderful month and from all of us on the Kilve News Team, we send to each and everyone of you our collective best wishes for a **'Very Happy Christmas'**.



Robbie

Contact the Editor on 01278 741594
or e-mail at davidandrobbie@talktalk.net

VILLAGE LUNCH CLUB CHRISTMAS LUNCH



KILVE VILLAGE HALL
WEDNESDAY

DECEMBER 15th at 12.30 pm

A glass of something to start followed by Roast Turkey with all the trimmings, (Vegetarian alternative if requested) with Christmas Pudding or Lemon Cheesecake for dessert.

Everyone in the village is welcome to join us (maximum of 25). Tickets, which cost £10 per person, must be bought by 8th of December, are available at Coffee morning or from Pat Woolley telephone 741157

LADIES and GENTS LUNCH GROUPS A COMBINED CHRISTMAS LUNCH



AT THE HOOD ARMS
THURSDAY

DECEMBER 9th at 12.30 pm

Please contact

Kelly Stone (741149) Or
Arthur Williams (741429)

CHRISTMAS TREE LIGHTING CEREMONY



at Kilve Stores
THURSDAY DECEMBER 2nd
See 'Shop News' for details



CHRISTMAS BINGO!
DETAILS ON
PAGE 5



KITCHEN & BATHROOM FEATURES

Find us on <https://www.facebook.com/kandbfeatures>

SUPPLY & FIT OR SUPPLY ONLY

Kitchens, Bathrooms, En-suites, Plumbing
Floor & Wall Tiling and Electrics
Installation to the highest standard.
Fully insured & Free Quotations
Quality, at prices you can afford
Family business with over 30 years experience.
Home: 01278 651089
Mobile: 07894140533
Email: ridgmentc@yahoo.co.uk

Kilve's 'Renowned' 'Mr VIKTOR'

Reliable Carpenter
and 'Odd Job' Man
No job too small



Call VIKTOR
ON 07902327701

DATA CAB TAXIS

Doniford Watchet
4 and 7 seater taxis
16 seater Mini Bus
We can also offer
Executive Airport
Transfers
01984 639141




**Jewellery repairs
and designs by
Stephen Howard**

Commissions
Melts and remakes
Stone replacements
Restoration
Rhodium plating
Cleaning
FREE ESTIMATES

 Find me on Facebook

The Goldbeach Studio

East Quantoxhead, by appointment. 07790 467536 | 01278 741570
goldbeach@btinternet.com | www.thegoldbeachstudio.com

WEST QUANTOXHEAD MOTORS

For all your motoring
needs

SERVICING M.O.T.

Cars, Vans 4x4s Trailers
TYRES A/C DIAGNOSTICS
COURTESY CAR

CALL BEN
for friendly advice & free quotes



BIDDISCOMBES of BRIDGWATER

Carpets & Furniture

Your local Experts
**BEDS UPHOLSTERY
FURNITURE**

Quality Service Value

Tel:- 01278 422364

www.biddiscombes.co.uk



Quantock Lodge Pool

Opening times 2019

Sunday 10.30 to 12.30 pm Family Swim

Monday 6.30 to 8.30 pm Lanes Swim

Tuesday 7.45 to 10.15 am Adult Swim

Thursday 7.45 to 10. am Adult Swim

6.30 to 8.15 pm Lanes Swim

Quantock Leisure Ltd.

Over Stowey

01278 733375

info@quantocklodge.co.uk



PARKE PLUMBING AND HEATING

Professional & reliable Plumber
Qualified in oil, gas and LPG
Boiler servicing, installation and
breakdown repairs
Bathrooms, radiators & system upgrades
01278 741723
07860 553704
parkeph@gmail.com

PETER GILL

It is with much sadness that we have to report the death, of Peter Gill who passed away on October 22nd.



Steve Collins, Chairman of our Parish Council , 'remembers'

'Peter and Bette moved to Kilve in 1989. Ever since, they have been part of the fabric of our village life. Not long after arriving, Peter joined the Parish Council, in the early 1990's, attending his last meeting on the 28th of September this year. These decades of performing a voluntary public service are a testament to his dedication to the local community.

Peter was also a regular attendee at the monthly Gents lunches and enjoyed the rough and tumble of the boisterous banter amongst the participants. On a very memorable Gents lunch that took place on Mark Walton's birthday in January 2016 he became a member of the notorious 'Kilve 6', a group that continued the celebration until around 7pm, or so we are told. In addition to Mark other members of this degenerate group were Messrs Williams, Cuff (senior), Collins and Sansom. Some of these had a challenge making it home and fortunately Peter's was the closest!

A true gentleman. Members of the Parish Council, Gents lunch attendees and the villagers of Kilve, Peter we salute you.'

0-0-0

'I would like to thank everyone for their help and very kind messages and cards of sympathy sent to me and the family on Peter's death. It was wonderful to be joined by so many of you who were able to come to the funeral and afterwards at the village hall.

It is a very sad time, but the thought of the village support gives us so much strength and uplift at this time.'

Thank you all so much.
Bette, Caroline and Vee.
0-0-0-0-0-0-0-0-0-0

Congratulations!

It is always such a pleasure to hear some exciting news about some of our younger readers here in the village.

'A little bird' has told us that Charlotte Scott of Old Rectory House recently won her category in verse speaking at the Taunton Drama Festival and this for the second year in succession.

Congratulations Charlotte from all of us.



WELCOME!

It is always a pleasure for us to welcome, on behalf of the village, new residents, and not least at Christmas time. Barbara Finniken has taken up residence at 8 Putsham Mead and The Hughes family, that is Tim, Claire, Abbie, Ella and the two dogs Archie and Isla have moved in to their new home—Oak Tree House in Hilltop.



We very much hope that all of you will have a long and happy stay here in Kilve

ST.MARY'S KILVE SUNDAY SERVICES

December 5th
Holy Communion at 11 am



December 12th
Family Service at 11 am

December 19th
Holy Communion at 9.30 am



**DECEMBER 25TH
10.30am
CHRISTMAS MORNING
FAMILY SERVICE**



**CHRISTMAS CAROLS
AT ST.MARY'S
SATURDAY AFTERNOON
DECEMBER 18th
At 2.30 pm**



CHRIS GREEN MOWERS

Specialising in repairs and servicing of lawn mowers and other garden machinery.

Suppliers of spares and new machines
A collection and delivery service available

Tel: 07714 281188

Email chrisgreenmowers@hotmail.co.uk
Wibble Farm, West Quantoxhead

WOODLOUSE CONSERVATION

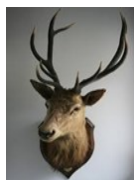
Recognised specialists in
Lime Rendering,

Lime Plastering
Building Restoration
and Conservation Projects

01984 629131

07788 810576

www.woodlouseconservation.co.uk



EXMOOR PLUMBING

Reliable plumber

No job to small

01984639629

07970632114

Radiators Cylinders

Tanks Ball valves

Bathroom Suites Taps Washers

Showers

Soil Pipes Waste Pipes Gutters

Drain Clearance

PLUMBING WORK COVERED



Pardlestone Farm

We would love to welcome your friends and family to Pardlestone Farm in Kilve where we offer bed and breakfast and a self-catering cottage – within walking distance of The Hood!

www.pardlestonefarm.co.uk

Please book online or call Mark or Ann on 01278 256629, 07721 763993 or email enquiries@pardlestonefarm.co.uk

Kelvin Henson
Painter and Decorator
Internal and External
Old, new and business premises
Property Maintenance

'35 YEARS EXPERIENCE'

Tel:-

01278 732949

Mobile

07817 641645



Purple Horse

07760 758 626

**Embroidery, Rug Cleaning
* Repairs**

sales@purplehorse.org

Personalised Embroidery

(Teamwear - Workwear - Equestrian)

Professional Rug Laundry and Repairs Service

Free Collections Available

Drop off at Williton Pet Equine



Williton Pet & Equine

Unit 11,
Roughmoor Enterprise Centre
Williton TA4 4AT
01984 631 508

www.willitonpetcare.com

Pet * Smallholder * Equestrian
Clothing for Horse & Rider
Local Delivery Available



RUSSELL H BRYANT

PROPERTY MAINTENANCE & REPAIR
TO DOMESTIC, AGRICULTURAL &
EQUINE PROPERTIES
Inc. PLUMBING REPAIRS ROOFING AND
PLASTERING

EST 1988

L.C.G.I. & A.C.I.O.B. QUALIFIED
FREE NO OBLIGATION QUOTES

01278 741054

Mobile 07787371741

email russellhbryant@yahoo.co.uk



HALLOWEEN THANKS

From Kelly Stone

I wanted to say a massive thank you to everyone who got involved with the Halloween celebrations this year. The children and Brian Woolley, Pat Hayward and Sophie Carr – you all dressed up, handed out treats, decorated and baked....it was so wonderful.



Kilve Stores are looking for a new member of staff in the New Year to work in the shop and Post Office. Would suit an active, retired person looking for a few shifts each week. For more information pop in the shop and see Matt or email mfhirst@hotmail.com

EAST QUANTOXHEAD CHRISTMAS MARKET

Saturday December 11th
at E.Q. Hall 10-12
Market Café/Mince Pies/
Tombola



READING GROUP

from Sue Hares

The book chosen for November was "The Glass House" a novel written by Eve Chase. This proved to be a popular choice enjoyed by the majority of the Group but not everyone. It was a split time line tale with each chapter narrated by a different character, which could be quite challenging. Nevertheless, this didn't impact too much on the enjoyment and was necessary to the story. The biggest criticism was the end, which we didn't think very satisfactory at all! Apart from that, a good book.

The Group continues to enjoy the hospitality of The Hood but is still unfortunately at full capacity.



KILVE VILLAGE HALL

B I N G O

FRIDAY 17TH

DECEMBER

DOORS AND BAR

OPEN 7 P.M.

EYES DOWN 7.30 P.M.

£1 PER GAME

**CHRISTMAS THEMED
PRIZES**

KILVE VILLAGE HALL MONTHLY DRAW

Congratulations to our latest winners
Shirley Dixon and Robbie Rutt



HOLFORD GARDENERS GROUP

Christmas Social

Tuesday December 21st at Holford and
District Hall 7.30pm

Members £1.00 Visitors £2.00

A Warm Welcome to all



ALAN MANCHIP

NICEIC Approved Electrical Contractor
Domestic Commercial Industrial Agricultural
Part P Domestic Installer Inspecting and Testing
Portable appliance testing

REFRIGERATION and AIR CONDITIONING

Design Supply Install Maintain
24 HOUR EMERGENCY

CALL OUT

01278 733536

Inwood farm Nether Stowey
E mail office@alanmanchip.co.uk

**GOUDE GARDENING**

Hedges, Lawns & Tree Care
Weeding & Planting
Garden Clearance

Call Paul on
01984 631899
07804 828193
goudegardening@yahoo.com

**ROBIN PARKER
TREE SERVICES**

All aspects of tree work undertaken
Felling, dismantling, pruning.
Woodland maintenance
Garden maintenance
Hedge trimming
Contact us on
01984 568047

**NEIL COBB
GENERAL BUILDER
EXTENSIONS**

BATHROOMS
ROOFING
KITCHENS
BRICKWORK
STONE WORK
FREE ESTIMATES

**LAKESIDE CARPENTRY**

Custom ~ Design ~ Build

MYLES JONES

07503 312961

lakesidecarpentry@hotmail.com
ALL ASPECTS OF CARPENTRY & JOINERY
KITCHENS
FITTED WARDROBES
WINDOWS & DOORS
RENOVATIONS &
RESTORATION

**Tracy Wint Soft Furnishings**

for curtains, blinds and a whole lot more...

Rose Cottage
Shurton
Stogursey
Somerset
TA5 1QE

01278 732734

tracywint@btinternet.com

The only limits are your imagination....

**BROWNS**
Hair & Beauty

Ladies, Gents & Children
Modern & Friendly Environment
Gift Vouchers Available
Full Disabled Access
**East Street Cannington TA5
2HJ**

01278-651251

www.browns-hairandbeauty.co.uk

CHIROPODIST

Grace Brown

M Inst CH P Reg no. Ch23926

FREE CONSULTATIONS

Nail Cutting & Filing. Hard skin & Thickened Nails
Corn & Callus Removal. Ingrowing Toe Nails
Diabetic Foot Care Advice. General Foot Health

Full Disabled Access

East Street Cannington TA5 2HJ

01278 651251

www.browns-hairandbeauty.co.uk

Its back!

MALT TASTING EVENING



Saturday January 22nd

KILVE VILLAGE HALL

At 7 pm

Tickets £20

to include a 'Hogmanay Supper'

Now available from

Mark Walton

(01278 741095)

Wine ticket also available

A fund raising event for

St Mary's Kilve



KILVE FLORAL CASCADE

(Sponsored by Kilve News)

Interest in our project has been incredible so far. Thanks to all our creative friends, we now have almost 500 flowers towards our target of 1400.

We are also delighted to report that Kilve News have offered to buy the netting for our display and we are most grateful for this generous support.

There is still plenty of time to get involved, making, donating materials or spreading the word. Flowers can be knitted, crocheted, fabric or felt, in any bright or pastel rainbow colour. They need to be approx. 10cm – 20cm (4" – 8"). If you would prefer to donate materials e.g. wool, fabric, felt etc. for others to use, there is a drop box in the church porch. Please **DO NOT** leave completed flowers in the box as they are too precious! They can be left at Park House, Streamside or village coffee mornings. We would also be pleased to collect them. Any queries please contact one of us on the numbers below.

Many thanks and Happy Christmas!

Claire Walton 01278 741095

Pat Woolley 01278 741157

(I thought you might like to know that I chose to support this project as it was Claire's idea and it shows a little of the gratitude we owe her for being Treasurer of Kilve News and managing our finances so well—Editor)

OUR NEXT ISSUE

Our next issue will be a **COMBINED** issue for January **AND** February Contributions for the 353rd edition to Robbie, or the Village Stores (marked Kilve News)



Please note

NO LATER THAN DECEMBER 12th

If you have reports, adverts or contributions to hand before the deadline please let us have them as soon as possible. It greatly helps having them well in advance of the 12th.

POPPY DAY APPEAL

In our last issue we mentioned how difficult it was going to be for this year's appeal, and we asked for your support in donating in the collecting tins which had been placed in Kilve Stores and the Hood Arms..

We are truly delighted to tell you that your response, as ever, was generous 'to a fault' and a total of over £320 was raised for the appeal. Grateful thanks to everyone who contributed and special thanks to Matt, Charlotte, Paul, Tracey and Simon who organised the village response.



TWENTY FIVE YEARS AGO

From Issue 96 December 1996

A report on the very popular and regular meeting of the 'Second Monday Club', indicated that the December talk was entitled 'Worst in living Memory', a review of some of the more significant recorded aspects of astronomical, meteorological and terrestrial phenomena which had effected Britain up to the end of the 19th century.

this month
25
years ago

YOUR NEW EDITOR

Some of you will have been turning each page very erratically to see if a mention would be made of someone who would be taking on the task as your new Editor. Well I am so pleased to tell you that a volunteer has stepped forward which is a great relief to me personally and to you, dear reader, the best bit of news in this whole issue!

I shall be editing the up-coming combined issue for January and February, and your new Editor will be taking charge for the March issue. But there I am leaving you in suspense! I thought it would be a nice idea to make the announcement as the first item of the first edition of 2022, so all will be revealed next month.



?

'THE HOOD ARMS' KILVE**Opening****Times****BAR****Tuesday to Saturday****12 noon to 3 pm 6pm till close****Sunday****12noon to 3pm****FOOD SERVICE****(Reservations recommended)****Tuesday to Saturday****12 noon to 2pm and 6pm to 9pm****Sunday 12 noon to 3pm****(Closed Mondays)****Tel:- 01278 741114****Website :-****www.thehoodarms.co.uk****Kilve Stores and Post Office****01278 741214****www.kilvestores.co.uk****mfhirst@hotmail.com**

Free, local home delivery service
Fresh Bakery Bread delivered daily
Fruit & Veg.

Over 65 different wines in stock

Flo Gas Stockist

(We no longer stock Calor)

Logs & Kindling

Compost available all year

Special Wine & Beer Offers

MONTHLY PREMIER SPECIAL OFFERS**and MEGAS DEALS****Brazier Smokeless Coal Stockist****POST OFFICE -PAY POINT****NATIONAL LOTTERY**

Newspaper deliveries to Holford & Hill Top

M H KELLAWAY**Chimney Sweep****Aga & Rayburn****Servicing****Wood Burners****serviced and installed****01278 741572**

Frenchic 
Furniture Paint®

KILVE STORES OFFICIAL STOCKIST
Pop into Kilve Stores to view our range of
Frenchic Furniture Paint

We stock a wide range of paints from the
Original Artisan Range, the Lazy Range,
and the Al Fresco Range along with all
the sundry items you need including a variety of
waxes, finishing coat, Freshneen
brushes, stencils, sugar soap and lots
more!

Pop in and have a look and join the**Chartered Architect**

*Specialising in work to historic properties
and buildings in sensitive landscape*

**ALINA WISNICKA** MSc Dip Arch RIBA MSc Building Conservation

Drawings for Planning

and Listed Building Consent

Working details and specification

Building Contract Management

Friendly and at reasonable rates**W.W.REFURBISHING**

**TILING
SKIMMING
PAINTING
Call WALDI
ON 07837918337**

T:01278 741755 m:07870305309 alina@alinawisnicka.co.uk



We are once again happy to take orders for all your Christmas drinks, anything bought by the case will be discounted by 10% and you can collect in-store, or we can deliver locally. Please place orders by **Saturday 18th December**. See Matt for more details! We can also order in any Glenmore bakery products including mince pies, Christmas puddings etc. Ask Matt or Charlotte for more details.

Mulled wine & mince pies for all. This will take place on **Thursday 2nd December**, gathering outside the shop at 6.00pm and the lights will go on around 6.30pm



With Christmas fast approaching its time to take a few days off.

Christmas Opening Hours

<u>Christmas Opening Hours</u>	
Christmas Eve	8.00am – 11.00am
Christmas Day	Closed
Boxing Day	Closed
Monday 27 th	Closed
Tuesday 28 th	Closed
Wednesday 29 th	9.00am – 12.00pm
Thursday 30 th	9.00am – 12.00pm
New Year's Eve	9.00am – 12.00pm
New Year's Day	Closed
Sunday 2 nd January	Closed
Monday 3 rd January	Closed
Tuesday 4 th January	Back to normal hours

Fresh bread, milk, fruit & veg will be delivered daily and Newspapers will be available on these days.

We would like to take this opportunity to thank everyone for your support and loyalty throughout 2021. I say this a lot but, without this we would not have a shop and post office in the village.

We wish everyone an incredibly Merry Christmas and a Happy New Year.

[illegible]

Kilve then and now – mapping the changes from Graham Keating

We've found a really fascinating website that's run by the National Library of Scotland. It allows you to zoom into any location in the UK and look at maps from different years. For Kilve, the oldest is a black and white OS map from 1895 and it shows the village as two distinct hamlets – Kilve, at the junction of Sea Lane and Hilltop Lane, and Putsham, on the A39.



If you would like to see more interesting maps and old photos you can do so at this web address.

<https://maps.nls.uk/geo/explore/>





Update from Kilve Parish Council's traffic committee.

We reported, briefly in last month's Kilve News on the site meeting between the parish council's traffic committee and Somerset county's highways commissioning officer, regarding our proposals for Quiet Lanes status. During the meeting we walked and drove along our lanes to put our case forward and familiarise the officer with the locations. He was supportive of our proposal and explained that the next stage was for SCC highways engineers to examine the site with regard to the likely minor works (mainly signage) needed. The engineers will then make an estimate of the costs of such works and inform us of this. Costs are likely to be minimal; again largely regarding signage. We informed the officer that the parish council would be prepared to contribute to these costs. We also sent SCC information about how much volunteer time and the 'costs' of this we, as parishioners had already spent regarding the surveys and report writing we had already done. This has helped our case significantly and reduced the amount of time SCC need to spend to assess the case.

During our site visit, we mentioned a range of other highways issues in Kilve that we are concerned about, included the following. The broken parapet in Hilltop Lane; the stone wall repairs needed in Sea Lane; the flooding of premises in October due to a freak storm and the failure of storm water to drain into the stream at the bridge over the A39; the frequency and timing of gully sucking/storm drain clearing throughout the parish. We asked that highways engineers looked into these matters and reported back to us.



Photo: broken parapet, Hilltop Lane; November 2021.

If as a parishioner you have any highways issues you are concerned about, in addition to reporting these to SCC highways, you can always ask us, as your parish council to report your concerns for you. You can do this via our website or by emailing

Cllr Greg Glendell on mail@greg-parrot.co.uk and Cllr Bruce Eley on bruceeyley@aol.com

OUR NEXT ISSUE

A 'gentle reminder' to all our contributors that our next issue is a COMBINED one for January and February.

'Deadline' December 12th

Please refer to page 7 for full details
Thank you.



HONEYBEE DIARIES

from Neil Wellum



I decided to call the honey bee doctor a few weeks ago. All seemed to be going well in the apiary, but then I noticed that I was still seeing a disturbingly high natural drop of Varroa mites, even after the usual late summer treatment. Left unchecked, I realised that this could lead to serious virus problems over the winter and, worst case, to colony collapse. Somehow, I have managed not to lose a colony to date, though I know that one day I surely will and I'm dreading it. In the meantime, I will do my level best to keep them healthy.

I went through the process of trying to work out what I might have done wrong: always blame the beekeeper first. What signs had I missed when inspecting the colonies and when assessing mite infestation levels? Had the late summer mite treatment been ineffective for some reason? Could there have been a mite invasion by infested bees absconding to look for a new home from a colony collapsing elsewhere? There are numerous possibilities.

The honey bee doctor is actually a government inspector from the National Bee Unit. They are very experienced beekeepers in their own right, who are based around the country, and they are highly trained in the detection, prevention and treatment of bee diseases and pests. We discussed the problem and agreed that I should do a further and different treatment immediately. It seems my report was not the first one she had received this year in a similar vein, though they are not sure why it might be happening.

The extra treatment has been administered and I am keeping a close eye on the hives. They seem to be responding OK and are getting into their winter clusters, there being only a little ivy left for the bees to forage on now. However, I won't really know until next spring if I did enough to help them get through the chilly forage-free winter months. The colonies will get one further planned mite treatment in mid-December, during the brood less period in the hives, which is just part of the normal controls I do every year. I also give them a Christmas treat of bakers' fondant, if I think their food reserves need a top up.

Hopefully, things will then start all over again next spring, as the colonies expand and forage. I can start to think again about swarm prevention and control, getting a honey crop, keeping them healthy and so it goes on. There is always something to do. I'm still only in my third year of beekeeping and never cease to marvel at these little animals and what they are capable of. They have been around in recognisable form as honey bees for about 26 million years or so, based on the fossil record, so I reckon they can teach *Homo sapiens* a thing or two. We are complete beginners by comparison and prone to making mistakes!

I will get the results of the honey DNA analysis in the spring and will see if I can share the results with you. It will be interesting to confirm what plants the bees visited.

Finally, I have done a silly little statistical exercise to give you a rough idea how much foraging the bees did this season. Based on the amount of honey I removed from the hives (36%) and what I left behind for the bees (64%), I calculated that they undertook something like 15,200,000 bee flights. Now we know why they are called workers! I hope you have enjoyed a look into a year of beekeeping and I am grateful to Robbie for giving me the opportunity to write this piece for Kilve News.

(It's us who are so grateful! A thoroughly interesting series of articles. Thank you Neil. Editor)

A HEARTFELT THANK YOU from 'THE ODD SQUAD'

We would like to thank you; the residents of Kilve, for supporting and giving to The Odd Squad's donation page to help fund Rare Dementia Support. Your generosity has been truly overwhelming, not just your donations but also from your kind words, physical support and the many hugs. We spent two and a half weeks and drove over 1400 miles making mad, crazy memories with some of our favourite people.

Our journey took us from Kilve, to Bedford, Lowestoft, Lincoln, Harrogate, Northumberland, Edinburgh, Ullswater, Snowdonia and our grand finale in The Brecon Beacons. We were given challenges and tasks to do along our route, each one for people to donate amounts of money. We stopped at various pit stops, to include Michelle's Café, The Big Red Barn and were joined by various guests, one being a stag on his weekend who popped on board Barbara in just his mankini. Another favourite was dodging the rain to buy sandwiches, but Suzy came out with a bottle of champagne instead!

Some of our favourite challenges were to dress in lycra and perform 5 yoga poses in a supermarket, we didn't have lycra but pink tu tu's seemed to be sufficient and looked great on Suzy and Chris (All 6 foot 4 of him). We also had to act/dress as animals in public, and so together we went off to have breakfast, much to the amusement of staff and customers at Otterburn Mill. Along with hedgehog chasing and gnome impersonations, these were just a few of the crazy things we got up to. But one of our favourite challenges was to write and perform a sea shanty, which I have to say we excelled at. Written, music composed, fancy dress and performed within two hours of said challenge, it was hilarious.

We met with family and friends on our journey, all of whom made it memorable in one way or another. Ali was thrilled to meet up with his younger brother Robbie and spent some quality time with him. Ken and Ginny visited in Lowestoft; it was lovely to see them. Andy an old workmate of Ali's surprised him in Ullswater, and there were a lot of hugs. Richard and Grant joined us in Snowdonia where we not only experienced the worst weather and meal in the worst pub, (which we have sworn never to talk about again) but we made it a positive memory and laughed together. We loved Richard's impersonation of Ruth Madoc performing his 'Hi de Hi' routine.

Sophie and I took on one of the scarier challenges of riding Velocity 2 the fastest and longest zip wire in the world, with speeds of up to 120mph. It was exhilarating, a lot of fun and I am so thankful to have shared that experience with her. Whilst in Brecon we were delighted to be joined by our friends David, Robbie, Carol and Dean. We had taken along some fancy dress to coax them into wearing for a challenge, but true to form they bought their own Somerset smocks, wigs and hats and another special memory was made. (This is one of my favourite video's, hearing Sophies laughter in the background) I think she turned to Robbie and said, 'Well I wasn't expecting that!'

It was quite a journey and we certainly made special memories. Importantly our journey taught us a lot about human nature and kindness. A quote from Chris 'The greatest memory I'll have of this trip is there are far more 'really nice' people in this world than there are 'not so nice' It has been an eye opener"

Continued >>>>>>>
In the next column

All our journey including challenges can be seen on Facebook, type in The Odd Squad Road Trip, and be prepared to giggle. There is one more video to be aired of The Village People = £££££'s ??

So far, we have raised £3,403.30, if we were lucky enough to raise £5k it will be matched by a secret donor.

This will make an amazing difference to building the first Rare Dementia Support Centre in the UK. If you would still like to donate, please follow this direct link

<https://uk.virginmoneygiving.com/Team/TheOddSquad>



Wishing you all a very Merry Christmas and a positive 2022,
with love
The Odd Squad

Post script to the above.

(Like Richard and Grant (from Pardlestone Lane), David and I were truly delighted to join Ali and Mel together with their 'minder', Suzy Gacon, on part of their journey raising awareness of the Rare Dementia Support Centre and in so doing raising some much needed funds for ongoing research. If that wasn't good enough in itself, it was really so rewarding for us, and indeed everyone who supported them along the way, to see Ali and their friend Sophie, who both suffer severely from this Rare Dementia, being able to create memories which ironically they might not remember for long but will be so important to their respective partners—Mel and Chris. As you will have already read in my few 'Editorial lines' on the front page, the accompanying donations given to me with the 'Christmas Greeting' pages raised a magnificent sum of some £510, and I am so so delighted, on your behalf to be giving this to Mel, Ali, Sophie and Chris in a fervent hope that it will get them that little bit further towards their £5000 target. Robbie)



Ali, Mel, Chris , Sophie and Suzy
(and not to be left out!!...Alfie)

**TO ALL OUR FRIENDS IN KILVE, HOLFORD & EAST
QUANTOXHEAD BEST WISHES FOR
A HAPPY CHRISTMAS AND A PEACEFUL NEW YEAR**

**Sheila & Steve
Putsham Farmhouse**



**Edre & Neil
Wayfarers**

**Del, Rodney and
Grandad
Pardlestone Barton**



**Penny & Barry
Putsham Mead**

**Sheila
Putsham Mead**

**Dorothy
May Cottage**

**Grace
1 Old Ham**

**Jamie, Lisa,
Minnie, Dotty &
Charlotte
Old Rectory House**

**Matt, Charlotte,
Ysabel, Georgia,
Baxter, Doris and
everyone at
Kilve Stores**

**Alison & Bruce
Putsham Hill Lodge**

**Ailsa
Putsham Mead**

**Simon, Heather,
Ben Charlotte Nat
& Buddy
The Old Rectory**

**Elizabeth & family
Great Hanger House**

**Shirley & Mike
Mill Close**

**David and Robbie
Grantchester**



**Kate and Dave
Mill Lodge**

**Claire & Mark
Park House**



**Ali, Mel Laura and
Frankie
Millands Lane**

**Neil, Jenny & Jago
Milllands Lane**

**Stan
Millstream**

**Pat & Brian
Streamside**

**TO ALL OUR FRIENDS IN KILVE, HOLFORD & EAST
QUANTOXHEAD BEST WISHES FOR
A HAPPY CHRISTMAS AND A PEACEFUL NEW YEAR**

**Mary & Andy
4 Old Ham**



**Joan
Millands Lane**

**Dianne & Graham
Parkhouse Cottage**

**Bette
Little Orchard**

**Trevor & Margaret
Church Cottage**



**Ween, Alan & Poppy
Pincop**

**Mary & 'Oscar'
Jasmine Cottage**



**Douglas
and 'his humans'
Adam, Tracy, Addy
& Izzy
The Old Post Office**



**Margaret
Bears Leet**



**Nick & Nicky
The Cider Barn**

**Mair & Arthur
Albertene**

**Mark and Jill
Bryher**

**Pam & Roger
Millands Farm**



**Norman
Putsham Mead**

**Frances & Jonathan
Quantock View**

**Richard
In Wellington**

**Suzy and Alfie
Terra Firma**



**Wendy & Eugene
2 Old Ham**

**Pat & Sarah
Kilve Mill**