

# 350 KILVE NEWS 350

Issue 350

October 2021



## EDITORIAL

This month heralds our 350th edition of Kilve News. It has been a 'long journey' since November 1987 and my fervent hope is that somewhere along the line, that you, dear reader, have enjoyed receiving and reading our monthly contributions. A big thank you to everyone who has contributed over these last 34 years and not least to our friends at Kilve Court without whom, we would never have managed to get to number 350.

There is another 'special' issue coming your way next month too, but more about that in November.

I must also draw your attention, this month, to two contributions which really spell out the meaning of 'Tear and Joy'. Joy when two young people find love and have a wedding day to remember and 'Tear' when the loveliest of men, at just 49 years old, is suffering from a rare form of dementia. Ali Davison and his wife Mel are hoping to create memories before it is too late and in doing so raise some money for Rare Dementia Support. Needless to say if you are able to help, it would be so welcomed.



*Robbie*

Contact the Editor on 01278 741594  
e-mail at [davidandrobbie@talktalk.net](mailto:davidandrobbie@talktalk.net)  
or text on 07850 102874

You can view all our editions of Kilve News  
at  
**KILVE VILLAGE WEBSITE**  
[www.kilvevillage.co.uk](http://www.kilvevillage.co.uk)

**KILVE VILLAGE HALL**

**CHEESE AND WINE**

SOFT DRINKS, TEA AND COFFEE ALSO AVAILABLE  
**FRIDAY 15<sup>TH</sup> OCTOBER**



**6 – 8 P.M.**

**AN OPPORTUNITY FOR NEW  
AND LONG-TERM RESIDENTS  
OF KILVE TO MEET AND GET  
ACQUAINTED**

**FREE EVENT**

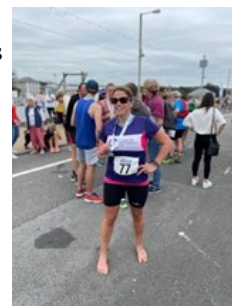
THOUGH – MONETARY DONATIONS ALWAYS WELCOME

## WELL DONE CHARLOTTE !!

'Well, I DID IT!!!! My time was 2 hours and 6 minutes which I have been told by a few people, is a very respectable effort for a first Half marathon. Out of 290 ladies that entered, I finished in 99th place, so I was quite pleased with myself and, to be honest, just happy to have completed it. I've never been so happy to see Matt and the girls' smiling faces at the finish line. At times it was so hard, but I did not stop once and ran every single step even though at times, especially up the hills, I wanted to stop. It was brutal! At the toughest parts when I was struggling, I thought of all you wonderful people who have sponsored me. So the way you all supported me, not just by donations but chatting to me and asking me how the training was going has been able to help me deal with the situation. It has just been truly amazing and I just don't have the words to express my gratitude.

**My running total of sponsorship is £2027.00**

I am now going to put my feet up. I may not be finished with running, so you may still see me out and about with my music on, appreciating our amazing village on foot and thinking there really is no better place to live than Kilve. From the bottom of my heart, thank you so much!!!  
A very tired Charlotte.'



**KITCHEN & BATHROOM FEATURES**

Find us on <https://www.facebook.com/kandbfeatures>

**SUPPLY & FIT OR SUPPLY ONLY**

Kitchens, Bathrooms, En-suites, Plumbing  
 Floor & Wall Tiling and Electrics  
 Installation to the highest standard.  
 Fully insured & Free Quotations  
 Quality, at prices you can afford  
 Family business with over 30 years experience.  
**Home: 01278 651089**  
**Mobile: 07894140533**  
 Email: [ridgmontc@yahoo.co.uk](mailto:ridgmontc@yahoo.co.uk)

Kilve's 'Renowned'  
 'Mr VIKTOR'  
 Reliable Carpenter  
 and 'Odd Job' Man  
 No job too small



Call VIKTOR  
 ON 07902327701

**DATA CAB TAXIS**

Doniford Watchet  
 4 and 7 seater taxis  
 16 seater Mini Bus  
 We can also offer  
 Executive Airport  
 Transfers  
 01984 639141



**Jewellery repairs and designs by Stephen Howard**

Commissions  
 Melts and remakes  
 Stone replacements  
 Restoration  
 Rhodium plating  
 Cleaning  
**FREE ESTIMATES**

Find me on Facebook

**The Goldbeach Studio**

East Quantoxhead, by appointment. 07790 467536 | 01278 741570  
[goldbeach@btinternet.com](mailto:goldbeach@btinternet.com) | [www.thegoldbeachstudio.com](http://www.thegoldbeachstudio.com)

**WEST QUANTOXHEAD MOTORS**

For all your motoring needs



**SERVICING M.O.T.**

Cars, Vans 4x4s Trailers  
**TYRES A/C DIAGNOSTICS**  
**COURTESY CAR**

**CALL BEN**  
 for friendly advice & free quotes

**BIDDISCOMBES of BRIDGWATER**

**Carpets & Furniture**  
 Your local Experts  
**BEDS UPHOLSTERY**  
**FURNITURE**



Quality Service Value

**Tel:- 01278 422364**

[www.biddiscombes.co.uk](http://www.biddiscombes.co.uk)

**Quantock Lodge Pool**

Opening times 2019  
 Sunday 10.30 to 12.30 pm Family Swim  
 Monday 6.30 to 8.30 pm Lanes Swim  
 Tuesday 7.45 to 10.15 am Adult Swim  
 Thursday 7.45 to 10. am Adult Swim  
 6.30 to 8.15 pm Lanes Swim

Quantock Leisure Ltd.

Over Stowey

01278 733375

[info@quantocklodge.co.uk](mailto:info@quantocklodge.co.uk)



**PARKE PLUMBING AND HEATING**

Professional & reliable Plumber  
 Qualified in oil, gas and LPG  
 Boiler servicing, installation and  
 breakdown repairs  
 Bathrooms, radiators & system upgrades  
**01278 741723**  
**07860 553704**  
[parkeph@gmail.com](mailto:parkeph@gmail.com)

**TWENTY FIVE YEARS AGO**

From Issue 94  
It was reported that the Village Hall Committee had received some £180 in response to their 'appeal' for funds to pay for new chairs for the hall.



**OUR NEXT ISSUE**

Our next issue will be for NOVEMBER Contributions for the 351st edition to Robbie, or the Village Stores (marked Kilve News)



**Please note**  
**NO LATER THAN OCTOBER 15th**

If you have reports, adverts or contributions to hand before the deadline, please let us have them as soon as possible. It greatly helps having them well in advance of the 15th.

**ST.MARY'S KILVE**

**SUNDAY**  
**OCTOBER 3rd**  
Holy Communion 11 am

**SUNDAY**  
**OCTOBER 10th**  
Family Service 11 am

**SUNDAY**  
**OCTOBER 17th**  
Holy Communion 9 30 am



**HOLFORD GARDENERS GROUP**

Holford and District Village Hall  
October 19<sup>th</sup> 7.30pm  
*'Climate Change Garden'*  
A Talk by Sally Morgan  
Members £1.00 Visitors £3.50  
All Welcome

East Quantoxhead  
Village Market and Coffee Morning  
Saturday  
October 16th  
10—12 noon

**Kilve Village Hall News**  
**MESSAGE FROM THE CHAIR**

As life continues to get back to some sort of normality, the Village Hall events are starting to resume and we are delighted to announce a Cheese and Wine tasting event on Friday 15<sup>th</sup> October (6pm-8pm) to say hello to some new residents to Kilve village.

Any comments or suggestions for future events can be addressed to chairkvh@gmail.com

Regards  
Tony

\*\*\*\*\*

**Upcoming events :**

**COFFEE MORNING – 25<sup>th</sup> Sept, 30<sup>th</sup> Oct**

**KILVE LUNCH CLUB - 13<sup>th</sup> October**

**Cheese & Wine – Fri 15<sup>th</sup> October (6-8pm)**

\*\*\*\*\*

**100 Club**

Congratulations to our latest winners:-

**Mair Williams and Neil Wellum**

**READING GROUP**  
from Sue Hares



For the September meeting the Group read "The Colour of Bee Markham's Murder" written by Sarah J. Harris. The book was not well received mainly due to the fact that the narrator, a young boy, suffered from too many syndromes including synaesthesia and prosopagnosia (face blindness and autism). He saw and heard people as colours which proved to be quite challenging for the reader. It was however a good story line, but could have been made a more enjoyable read with less complications. Unfortunately, the Group is at full capacity.

*Tracy Wint Soft Furnishings*

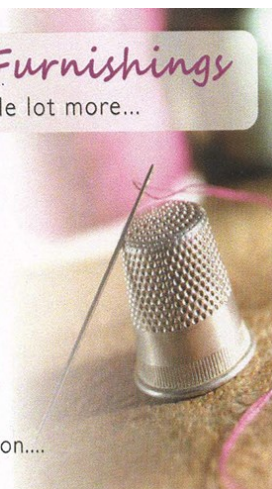
for curtains, blinds and a whole lot more...

Rose Cottage  
Shurton  
Stogursey  
Somerset  
TA5 1QE

**01278 732734**

tracywint@btinternet.com

The only limits are your imagination....





### CHRIS GREEN MOWERS

Specialising in repairs and servicing of lawn mowers and other garden machinery.

Suppliers of spares and new machines  
A collection and delivery service available

Tel: 07714 281188

Email [chrisgreenmowers@hotmail.co.uk](mailto:chrisgreenmowers@hotmail.co.uk)  
Wibble Farm, West Quantoxhead

## WOODLOUSE CONSERVATION

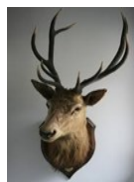
Recognised specialists in  
Lime Rendering,

Lime Plastering  
Building Restoration  
and Conservation Projects

01984 629131

07788 810576

[www.woodlouseconservation.co.uk](http://www.woodlouseconservation.co.uk)



### EXMOOR PLUMBING

Reliable plumber

No job to small

01984639629

07970632114

Radiators Cylinders

Tanks Ball valves

Bathroom Suites Taps Washers

Showers

Soil Pipes Waste Pipes Gutters

Drain Clearance

**PLUMBING WORK COVERED**



## Pardlestone Farm

We would love to welcome your friends and family to Pardlestone Farm in Kilve where we offer bed and breakfast and a self-catering cottage – within walking distance of The Hood!

[www.pardlestonefarm.co.uk](http://www.pardlestonefarm.co.uk)

Please book online or call Mark or Ann on 01278 256629, 07721 763993 or email [enquiries@pardlestonefarm.co.uk](mailto:enquiries@pardlestonefarm.co.uk)

Kelvin Henson  
Painter and Decorator  
Internal and External  
Old, new and business premises  
Property Maintenance



'35 YEARS EXPERIENCE'

Tel:-

01278 732949

Mobile

07817 641645

## Purple Horse

07760 758 626

**Embroidery, Rug Cleaning**

**\* Repairs**

[sales@purplehorse.org](mailto:sales@purplehorse.org)

\*Personalised Embroidery\*

(Teamwear - Workwear - Equestrian)

\*Professional Rug Laundry and Repairs Service\*

\*Free Collections Available\*

\*Drop off at Williton Pet Equine\*



## Williton Pet & Equine

Unit 11,

Roughmoor Enterprise Centre

Williton TA4 4AT

01984 631 508

[www.willitonpetcare.com](http://www.willitonpetcare.com)

Pet \* Smallholder \* Equestrian

Clothing for Horse & Rider

Local Delivery Available



## RUSSELL H BRYANT

PROPERTY MAINTENANCE & REPAIR  
TO DOMESTIC, AGRICULTURAL &  
EQUINE PROPERTIES  
Inc. PLUMBING REPAIRS ROOFING AND  
PLASTERING

EST 1988

L.C.G.I. & A.C.I.O.B. QUALIFIED  
FREE NO OBLIGATION QUOTES

**01278 741054**

Mobile 07787371741

email [russellhbryant@yahoo.co.uk](mailto:russellhbryant@yahoo.co.uk)



## KILVE GOLF KLUB

### Monthly update

On Thursday 26<sup>th</sup> August 13 players competed in an 18 hole match, at Enmore Park GC, which was in stunning condition. The winners were: Trevor Stanton with 35 points in the 18 hole competition. David Davison was nearest the pin with a tee shot that ended up 6 inches from the 2<sup>nd</sup> hole, just inside Trevors tee shot, which was a mere 12 inches away. Jim Hatt returning to the village, won the most accurate drive comp. Jim was presented with a club shirt, in recognition of his contribution to the society. It is hoped he will return from the south coast for more of our fixtures.

On Thursday 9<sup>th</sup> September a 9 hole competition was keenly competed, resulting in 2 new winners. Mandy Hoare was first in the stableford competition, with 14 pts and Robbie Rutt won the Putting comp with a mere 14 putts.

We have two upcoming "friendly" fixtures, on Saturday 16<sup>th</sup> October we play a match against Kilve Cricket Club at Minehead. Later in October we have a match against a Holford village team at Cannington.

Finally, our end of season awards dinner will be held at The Hood Arms on Friday 26<sup>th</sup> November.

We will continue to play fixtures through the winter so if you are interested in finding out more or playing, please get in touch. The society has members from Cannington GC, Minehead GC and Enmore Park GC.

Mark Walton [mtwalton@btinternet.com](mailto:mtwalton@btinternet.com) Tel: 741095.

### KILVE 'VILLAGERS' CRICKET

The final match of the three-match series, against Kilve CC, took place on Saturday 11<sup>th</sup> September. Having lost the first two matches, we were hoping to end the series with a win. Kilve CC batted first and scored 133 for 5, in their allotted 25 overs. Sadly the "Villagers" again fell short of the run target by 18 runs, scoring 115 for 9. The Villager highlights being, David Tansley 35 runs not out, Pat Hayward 17 runs. With the ball Steve Collins and Dan Sefton both took two wickets and David Tansley one.

The real highlight of the day was being part of a match played in good spirit with player ages ranging from 14 to over 70. Three generations of the Wilcox family played for Kilve CC. Between the two teams there were 5 women players.

Thank you to all at Kilve CC for marvellous hosting yet again. We have now had 3 years of warm up matches, next year is going to be the "Villagers"! If anyone is interested in playing in 2022 series, please contact

Mark Walton [mtwalton@btinternet.com](mailto:mtwalton@btinternet.com) Tel: 741095.

### KILVE SHORT MAT BOWLS

The 2021/2022 season got off to a good start on the evening of Monday September 13<sup>th</sup> when ten players got together for their first game of the new season. It was particularly encouraging to welcome a couple of new members.

A reminder that the Bowls Club meet weekly in the Village Hall of a Monday evening with a start time of 7 pm. There is always a warm welcome for anyone to come along and see if they would like to join in. Your contact in the village for any enquiries is Robbie (741594)



## Kilve & Holford Play Reading Group

The late Kilve residents of Doreen and Olaf Chedzoy founded the group as long ago as 1989, when prior to that, they had organised play reading groups in the north of England before they moved here to Somerset. In the beginning, I am reliably informed that readings were held of an evening, but the dark hours were not always congenial for travelling or walking home and it was agreed after one particularly cold winter to meet in future of an afternoon, once a month from October through to March or April.

I first joined the group - or rather - I had to be invited to join - as it was the procedure in those days by Doreen and at my first meeting, I have a vivid recollection of sitting in a cosy armchair in front of a blazing fire in the lounge of Mary Hoose's house in East Quantoxhead, on a cold afternoon with eight or nine other ladies plus of course Olaf, listening to them speaking their parts of a play - the title of which I shamefully admit I do not remember (despite the little black book!) but thinking as I looked out of the window across the fields watching the sun setting, that it was a very pleasant way to spend a winters' afternoon. At the first couple of meetings, I was given small parts; it can be a little intimidating if you're not used to reading aloud to others or have made speeches, or indeed have never trod the boards, but of course you don't have to be a budding thespian...once you're into the role, it can come quite easy and you find yourself involving yourself in the character. My experience was of friendliness and encouragement, especially if you pronounced a word wrong! The plays were varied, some very funny (and could be risqué!) and you would find yourself unable to play the part for giggling, which in turn made everyone else start laughing and it would be a while before you could reclaim your composure!

A few years have passed since those early meetings and six years ago, whilst on holiday, I received a text message on my 'phone from one of the play readers to say, that they had decided I should become the organiser of the group (there's democracy for you!) Being some hundreds of miles away I was not in a position to argue! Since then, we have had a lot of changes as sadly some of those founding members are no longer with us, but although new people joined, our number has depleted, which brings us to the position we now find ourselves in. I wish to stand down as 'organiser' but it's doubtful that any of the existing members will want to take over, so I am hoping that this little history of the Play Reading Group might attract some people, especially those new to the district who would like to join the group and perhaps get involved with the management; I am of course, more than willing to show them the ropes, which isn't difficult, it's a matter of choosing - with others - the plays from the County Library, and arranging convenient dates and venues. It has always been the 'norm' to meet of an afternoon, take turns in hosting and to provide light refreshments, however, the meetings do not have to be held of an afternoon, they do not have to be held all through the winter, they can be held any-time through the year, a garden on a warm summers day would be more than agreeable and it doesn't always have to be 'play' reading, we can read poetry, essays, interesting articles or even stories of your own life you could share, there are many options!

We just need some new 'blood' and if you feel you can transfuse some, do please get in touch with me, it would be a great shame for this little group to cease.

**Mo (Plomgren) – Holford**  
**Tel: 01278 741152 or email:**  
**[plomdove4145@googlegmail.com](mailto:plomdove4145@googlegmail.com)**

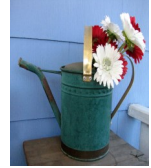
**ALAN MANCHIP**

NICEIC Approved Electrical Contractor  
 Domestic Commercial Industrial Agricultural  
 Part P Domestic Installer Inspecting and Testing  
 Portable appliance testing  
 REFRIGERATION and AIR CONDITIONING  
 Design Supply Install Maintain  
 24 HOUR EMERGENCY  
 CALL OUT  
 01278 733536  
 Inwood farm Nether Stowey  
 E mail office@alanmanchip.co.uk

**GOUDE GARDENING**

**Hedges, Lawns & Tree Care**  
**Weeding & Planting**  
**Garden Clearance**

Call Paul on  
 01984 631899  
 07804 828193  
 goudegardening@yahoo.com



**LOCAL HARDWOOD LOGS  
 DELIVERED**

£70 PER CUBIC METRE  
 TO ORDER OR MORE  
 INFORMATION  
 CALL  
 NICK THORNE  
 741216 or  
 079774501511



**NEIL COBB  
 GENERAL BUILDER  
 EXTENSIONS**

BATHROOMS  
 ROOFING  
 KITCHENS  
 BRICKWORK  
 STONE WORK  
 FREE ESTIMATES  
 TEL 01278 425740  
 Or Mobile 07753620961

**LAKESIDE CARPENTRY**

*Custom ~ Design ~ Build*

**MYLES JONES**

07503 312961

lakesidecarpentry@hotmail.com  
 ALL ASPECTS OF CARPENTRY & JOINERY  
 KITCHENS  
 FITTED WARDROBES  
 WINDOWS & DOORS  
 RENOVATIONS &  
 RESTORATION

**ROBIN PARKER  
 TREE SERVICES**

All aspects of tree work undertaken  
 Felling, dismantling, pruning.  
 Woodland maintenance  
 Garden maintenance  
 Hedge trimming  
 Contact us on  
 01984 568047



**BROWNS**  
 Hair & Beauty

Ladies, Gents & Children  
 Modern & Friendly Environment  
 Gift Vouchers Available  
 Full Disabled Access  
**East Street Cannington TA5  
 2HJ**  
**01278-651251**  
[www.browns-hairandbeauty.co.uk](http://www.browns-hairandbeauty.co.uk)

**CHIROPODIST**

*Grace Brown*

M Inst CH P Reg no. Ch23926

**FREE CONSULTATIONS**

Nail Cutting & Filing. Hard skin & Thickened Nails  
 Corn & Callus Removal. Ingrowing Toe Nails  
 Diabetic Foot Care Advice. General Foot Health

**Full Disabled Access**

**East Street Cannington TA5 2HJ**  
**01278 651251**  
[www.browns-hairandbeauty.co.uk](http://www.browns-hairandbeauty.co.uk)

## HONEYBEE DIARIES

from Neil Wellum

I extracted a second batch of honey three weeks after the first. The honey was quite different, more viscous and a bit darker, with some complex and delicious flavours. This told me that the bees had just been up onto the heather, which I could see as large patches of purple on the hills. It is only a round trip of just over two miles and well within their range. Now they have turned their attention enthusiastically to the late flowering sedum in the garden; last up before winter will be the ivy. I always try to let the ivy flower before cutting the hedge, which is why it looks ragged at the moment. That's my excuse, anyway!

Autumn is fast approaching and I am giving all my colonies some treatment against the dreaded Varroa mite. This involves putting an approved treatment based on the essential oil thymol into each hive. The small Varroa mites (1-1.5mm) don't like it, but it doesn't harm the bees. Fewer mites in turn means fewer instances of harmful viruses for which the mites act as a vector. A bad virus outbreak in winter can seriously weaken and even destroy a honeybee colony. As Covid 19 has reminded us, viruses are all around and this is just as true for the bees. If they can stay strong and healthy, then their chances of beating off a viral infection are that much greater. That is why I think it is so important to give them a helping hand at this time of year. One day, as our UK bees build greater natural resistance to the mites, it should be possible to avoid chemical intervention, but I don't think we are quite there yet, based upon what I have learned, unless you are prepared to accept colony losses in true Darwinian style.

At present, the queen is laying the eggs that will turn into the winter bees and those are the bees I need to protect. A winter worker bee is much longer lived than her summer sisters because she has less foraging to do and a lower metabolic rate. She does have the important job of getting the colony through to start the new year in early spring. She must look after the queen and help keep the colony warm, drawing on the stores of honey they built up through the summer.

One of my last jobs of the season is to make sure the bees have enough honey in the hives to get them through the winter. A strong colony will need about 40lbs of honey to feed them until the spring. I think mine are OK already, but if in doubt, I can top up their supplies with ordinary sugar syrup.

I have also just started a series of tutorials with some Master beekeepers in the Somerset Beekeepers' Association leading to an exam in November. This will be my third exam this year. So far, I have taken exams on honeybee management and honeybee biology. This module is about pests, diseases and poisoning, so every time I visit the hives I will no doubt become increasingly neurotic about every little health concern I see!

It's worth finishing off this month by mentioning that the Exmoor Beekeepers' Association is holding its annual honey show at the Methodist Hall in Minehead on Saturday 9 October. It's open to the public from 11am and closes at 4pm. There'll be honey for sale and much more. It will be my first show as a member and I have been roped into a job already! Hope I might see some Kilve residents there.



A couple of recent photos from Neil to accompany his article 'Honeybee Diaries'



**'THE HOOD ARMS' KILVE**

**Opening Times**

**BAR**

**Tuesday to Saturday**

**12 noon to 3 pm 6pm till close**

**Sunday**

**12noon to 3pm**

**FOOD SERVICE**

**(Reservations recommended)**

**Tuesday to Saturday**

**12 noon to 2pm and 6pm to 9pm**

**Sunday 12 noon to 3pm**

**(Closed Mondays)**

**Tel:- 01278 741114**

**Website :-**

**www.thehoodarms.co.uk**

**Kilve Stores and Post Office**

**01278 741214**

**[www.kilvestores.co.uk](http://www.kilvestores.co.uk)**

**[mfhirst@hotmail.com](mailto:mfhirst@hotmail.com)**

Free, local home delivery service  
Fresh Bakery Bread delivered daily  
Fruit & Veg.

Over 65 different wines in stock

Calor & Flo Gas Stockist

Logs & Kindling

Compost available from March

Special Wine & Beer Offers

**MONTHLY PREMIER SPECIAL OFFERS** Cheapest Coal in the Area!

Order 10 Bags for a further 10% discount

**POST OFFICE -PAY POINT**

**NATIONAL LOTTERY**

**HOME DELIVERY**

**OPEN**

**Frenchic**   
Furniture Paint®

KILVE STORES OFFICIAL STOCKIST  
Pop into Kilve Stores to view our range of  
Frenchic Furniture Paint

We stock a wide range of paints from the  
Original Artisan Range, the Lazy Range,  
and the Al Fresco Range along with all  
the sundry items you need including a va-  
riety of waxes, finishing coat, Freshneen  
brushes, stencils, sugar soap and lots  
more!

**Pop in and have a look and join the**

**M H KELLAWAY**

**Chimney Sweep**

**Aga & Rayburn**

**Servicing**

**Wood Burners**

**serviced and installed**

**01278 741572**

**Chartered Architect**

*Specialising in work to historic properties  
and buildings in sensitive landscape*

**ALINA WISNICKA** MSc Dip Arch RIBA MSc Building Conservation

Drawings for Planning

and Listed Building Consent

Working details and specification

Building Contract Management

*Friendly and at reasonable rates*



T:01278 741755 m:07870305309 [alina@alinawisnicka.co.uk](mailto:alina@alinawisnicka.co.uk)

**W.W.REFURBISHING**

TILING  
SKIMMING  
PAINTING

Call WALDI

ON 07837918337





## THE ODD SQUAD ..... 'driving memories'

Welcome to our adventure 'with dementia'. A silly crazy idea that was born after consuming ridiculous amounts of 'Old Tom Crisp' gin along with a few glasses of pink Bouvet! It's amazing how wonderfully brave and daring you become once under the influence. But apparently the best laid plans can emerge from fun, frolics and hilarity!

Well I hope by the time you read this article we will either be packing up to leave or well on our way?

We will be driving in convoy; like a 2021 version of Wacky races! across the country, up the Eastern coast to Scotland.

We then follow on down the western coast through the beautiful scenery of the Lake district and into Wales, before heading home.

This adventure started out to be a trip to make some special memories, but too much gin and fizz has made it grow into a fundraising adventure. You may be thinking, well that's quite an easy journey but why is it so important? Well two of our squad; Ali and Sophie carry a very rare gene mutation called Presenilin 1 (PSEN1) This very rare gene is inherited through families, each family member having a 50/50 chance of inheriting. The mutation manifests as a Rare form of Familial Early Onset Alzheimer's disease (FAD). Unlike typical Alzheimer's which usually occurs in people in their 70's and 80's FAD occurs much earlier, in their 40's & 50's or in the case of our family as early as their 30's. There is a widespread lack of understanding and a shortage in the resources needed to support those families affected like ours. We want to shout out loud and help to change this.

Rare Dementia Support (part of The National Brain Appeal) Is a world leading UK based service led by the UCL Dementia Research Centre (DRC) They aim to empower, guide and inform people living with a rare dementia diagnosis and those who care about them.

Most of you know Ali, (pictured below) either from riding his bike, running, or from the years (12 to be exact) of him being the bonkers practical joker of Kilve. Ali carries this rare gene and as most of you know is now symptomatic to FAD. Despite this he is still giving his body (!!!) and time to the Dementia Research Centre in the hope that he will be part of the amazing tribe we have formed there to find a cure for dementia, not just FAD but for anyone out there that may be affected in the future, it could be your mum, dad, granny sister ?



### So that's the medical bit over with.... Now onto the bit you really want to read about?

Evie & Elsie will be leaving Kilve on the morning of the 10th October, along with their drivers Mel and Suzy and passengers, Ali, Alfie & Harley. We will be driving across the country to a secret location and then onwards to Lowestoft, where the real adventure begins.

The Hollies in Lowestoft is home to '**Barbara the good life bus**' Barbara is a beautiful bright yellow lady, 35ft long and pretty wide. Yes Barbara is a converted American School Bus, she is driven by Chris and chief navigator Sophie is her passenger. We will spend two nights together to finalise plans and to meet up with Grant from the Lowestoft Gin Distillery. Grant will be helping us by providing some of the Old Tom Crisp Gin range which we will be promoting along the way, not only because they are delicious but because they are named after my great grandfather.

**How can you help??** Well whilst on this journey we hope to be taking on some very silly and unauthorized challenges, in exchange for donations to our fundraising page. We don't know what these challenges will be so we may just need some audience participation? Photographic and/or video evidence can be supplied, and some will take place live on Facebook or Instagram.

This is a one off journey as 'The Odd Squad' and it is really very important to us. We understand that these past 18 months have been difficult for all, we are not begging for huge donations (although any £1 spared would be great) We have a secret donor who will double the amount if we make it to £1000.00 so we are asking you all for as much exposure as you can? ..

You may work for, or have your own business that can help out in some way, Whether financially supporting us or sharing our journey on your own business media sites?

We are very lucky to have had some financial support from **Purple Heart Wishes** - a charity that helps people with a terminal illness to fulfil a wish. They are helping with some of the campsite costs. We have decided that our fundraising will be split 90% to Rare Dementia Support and 10% back to Purple Heart Wishes, so that another family can benefit.

So please **FOLLOW 'THE ODD SQUAD' on Instagram, facebook & Twitter** and **SHARE SHARE SHARE ..** if you can spare a £1 or two then fabulous!

If you are a budding Dick Dastardly or a Penelope Pitstop and want to join us for any part of the journey, we welcome fellow adventurers, especially if you're up for a challenge! Please DM The Odd Squad for an itinerary

Thank you for reading

To donate

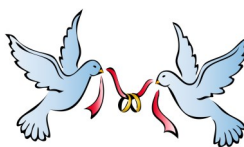
<https://virginmoneygiving.com>

and search for The Odd Squad and click on Melinda Davison





September 1st, a very special day in the life of Sophie Spence, daughter of Lizzie and Paul Spence of the 'Hood Arm,s' when she was married to Alex Kinna at St. Mary's church. A wedding is always a joyous occasion and not least this one, being the first wedding for some years at the church and the biggest celebration held in Kilve since the start of the pandemic.



We would like to say a huge thank you to everyone who helped make Sophie and Alex's wedding. such a wonderful and memorable day.

We honestly have never experienced such kindness and generosity from so many lovely people.

Thank you to Trevor for the lovely photos and to so many of you for all the petals, lavender and rosemary you so happily let me come and collect. I think you will all agree the end result was worth it.

The confetti shot looks amazing.

Kilve is certainly a special village that we as a family have grown to love but only because of the special people in it.

You all scrubbed up wonderfully well. although I expected nothing less. Looking around the garden at the Hood you all looked so happy which made the whole day so worth while. It's been a tough year or so for everyone so hopefully a little bit of normality for us all.

Thank you also for all the many gifts and cards you left for the new Mr and Mrs Kinna which was very generous and unexpected.

Sophie and Alex are away for a few days. as two weddings is exhausting stuff, all that celebrating! On their return they will be back to thank you all personally.

A big shout out for the lovely folk of Kilve!

Paul and Lizzie Spence