



KILVE NEWS



Issue 346

June 2021

EDITORIAL

Just a couple of words from me as space is rather limited this month. Easing of restrictions and the weather, as usual not cooperating, but I do so hope this finds you all well and optimistic that the days ahead in June will be something to cherish.

Stay safe and well.

Robbie

Contact the Editor on 01278 741594
or e-mail at davidandrobbie@talktalk.net
Or text on 07850 102874

KILVE VILLAGE WEBSITE

www.kilvevillage.co.uk



Pride of place!

On our front page and quite rightly so.

June 8th and Phyllis Lemon, who we believe is Kilve's oldest resident, will be celebrating her 98th birthday.

On behalf of the whole village, we extend to Phyllis many many congratulations and best wishes for a very Happy Birthday.



Our front page of Kilve News invariably has a message of 'Welcome' on its front page, as we welcome new residents to our village, however this month it is, sadly, a 'FAREWELL'



Anette and Alan Hopper had owned St George's in Sea Lane for over 30 years and after an illustrious career as a very senior officer in the Royal Air Force, Alan, together with his wife, became permanent residents in Kilve over 25 years ago. During this time they have been known for their great contribution to village life. Many will remember, with affection, the delightful Malt Tasting evenings which they organised. Alan has served over 25 years as Secretary to the PCC and for Kilve News they have had a significant input with Alan acting as 'proof reader' (to a very thankful Editor) and Annette being one of the very first in the village to undertake the home distribution of Kilve News once it had been printed. Just a couple of mentions of the many many contributions they have undertaken for our village. As they move to their new home on 'the other side of the hill', we offer them our collective thanks for all they have done and wish them much happiness in their new home.

0~0~0~0~0~0~0

On the subject of 'time in the village', a little bird tells us that Vera and William Smith of 'Dolphins' in Hilltop Lane will be celebrating 25 years in the village on June 14th. Guess what....you're nearly a 'local'!! Seriously, we are very heartened to hear how much you have enjoyed your 25 years in Kilve and we hope there will be many more to come.

"Kilve Ashes 2021"

The much anticipated cricket series, where a team of Villagers take on Kilve CC, is back for the 3rd year. It is a three match series with the first game on Saturday 26th June. Here is the catch, we need more players for the Villagers team. No experience required. All kit provided. Nets practice starts on Tuesday 1st June at 6pm. It is a social opportunity to get out in the fresh air and enjoy some exercise, followed by refreshments!

For more information contact Mark Walton. Tel 741095. Now the really good news. The first game will include an afternoon of entertainment and an evening of Live music, "Burning Cow" festival. More details on page 10.

KITCHEN & BATHROOM FEATURES

Find us on <https://www.facebook.com/kandbfeatures>

SUPPLY & FIT OR SUPPLY ONLY

Kitchens, Bathrooms, En-suites, Plumbing
Floor & Wall Tiling and Electrics
Installation to the highest standard.
Fully insured & Free Quotations
Quality, at prices you can afford
Family business with over 30 years experience.
Home: 01278 651089
Mobile: 07894140533
Email: ridgmontc@yahoo.co.uk

Kilve's 'Renowned'
'Mr VIKTOR'
Reliable Carpenter
and 'Odd Job' Man
No job too small



Call VIKTOR
ON 07902327701

DATA CAB TAXIS

Doniford Watchet
4 and 7 seater taxis
16 seater Mini Bus
We can also offer
Executive Airport
Transfers
01984 639141



Jewellery repairs
and designs by
Stephen Howard

Commissions
Melts and remakes
Stone replacements
Restoration
Rhodium plating
Cleaning
FREE ESTIMATES

Find me on Facebook

The Goldbeach Studio

East Quantoxhead, by appointment. 07790 467536 | 01278 741570
goldbeach@btinternet.com | www.thegoldbeachstudio.com

WEST QUANTOXHEAD MOTORS

For all your motoring
needs

SERVICING M.O.T.

Cars, Vans 4x4s Trailers
TYRES A/C DIAGNOSTICS
COURTESY CAR

CALL BEN
for friendly advice & free quotes



BIDDISCOMBES of BRIDGWATER

Carpets & Furniture

Your local Experts
BEDS UPHOLSTERY
FURNITURE

Quality Service Value

Tel:- 01278 422364

www.biddiscombes.co.uk



Quantock Lodge Pool

Opening times 2019

Sunday 10.30 to 12.30 pm Family Swim

Monday 6.30 to 8.30 pm Lanes Swim

Tuesday 7.45 to 10.15 am Adult Swim

Thursday 7.45 to 10. am Adult Swim

6.30 to 8.15 pm Lanes Swim

Quantock Leisure Ltd.

Over Stowey

01278 733375

info@quantocklodge.co.uk



PARKE PLUMBING AND HEATING

Professional & reliable Plumber
Qualified in oil, gas and LPG
Boiler servicing, installation and
breakdown repairs
Bathrooms, radiators & system upgrades
01278 741723
07860 553704
parkeph@gmail.com

TWENTY FIVE YEARS AGO

From Issue 91 June 1996
This issue reported on the Village Hall AGM. It was stated that the hall had just undergone full redecoration and new curtains had been fitted. Village Hall chair, Christine Denovan said it was now hoped that proposed fund raising ideas would enable the hall to replace the 'worn out and shabby chairs'.



READING GROUP

from Sue Hares

"Little Fires Everywhere" was the book chosen for the May meeting. This novel written by Celeste Ng was set in present day Ohio involving a "perfect" man made village for middle America. Naturally all was not perfect! After a slow start it became generally a very enjoyable read with a few criticisms. Certainly an author to read again.

The Group will continue with meetings on Zoom until such time as "normal" life resumes!

Unfortunately, the Group is at full capacity and there is currently a waiting list.



OUR NEXT ISSUE

Our next issue will be for July Contributions for the 347th edition to Robbie, or the Village Stores (marked Kilve News) **Please note**

NO LATER THAN JUNE 15th

If you have reports, adverts or contributions to hand before the deadline please let us have them as soon as possible. It greatly helps having them well in advance of the 15th



Kilve Village Hall News

from Tony Mudge

The Village Hall committee continue to meet over ZOOM calls.

100 Club

The draw continues to be made remotely at the moment via a random number generator and the latest winners were:

Grace Thorne and Ray Franklin

FOR SALE

A table kindly donated by GeMare Farm over a year ago for the antiques and collectors fair is up for sale. A tan colour wood rather like yew. It's about 1930ish with cabriole legs the measurements are as follows:- 35" wide 28" high 48" long 6" deep. when both flaps are down

The legs that hold the flaps up move on tiny brass wheels. It's condition is good for it's age and it is currently being stored at Hilltop Farm. We are asking for £40 which would go to church funds. It would be lovely if someone local would like to purchase this, to keep it in Somerset.

Please contact Joy Orritt to ask for more details on 01278 741672 or mobile 07711317903.

(Not enough space to include a good-sized photo but if you contact the Editor he is happy to forward one by e-mail)

JUNE VILLAGE AGENT NEWS

The world is finally opening back up again! **We are really looking forward to being able to get back out in the community to see our clients!**

The re-opening of services will bring great relief to the many thousands of unpaid Carers in Somerset who have not had access to respite facilities for a considerable length of time.

There is also **The Filo Project** for Somerset residents The Filo Project offers high quality day care for small groups of older people that have memory loss or moderate dementia.

You can call them on **0333 939 8225** or visit <https://www.thefiloproject.co.uk/>

We Hear You provides free therapeutic support to children, families and individuals in Somerset affected by cancer and other life-threatening conditions. Their face-to-face services are reopening and you can contact them on 01373 455 255 or visit <https://www.wehearyou.org.uk/>

If you are an unpaid Carer, please do get in touch – you may not feel you need any help and support right now, but we can just check in with you, so you know what's available if and when you feel you would benefit from further advice. Right now, we can help you with anything from finding a sitting service if you have a hospital appointment, a package of care if you or a family member are returning from hospital, or provide you with a little rest from cooking with our 'Carer Packs' - delicious pre-made meals for you and the person you care for. We can help make your everyday life a little easier, check you are receiving the correct benefits and look at the whole family support need, especially as we work closely with your doctor's surgery and adult social care. We have a freephone Carers Advice line you can call 0800 31 68 600 or text 'CARER' to 78070 and the Carers Advice line will call you back.

Whether or not you care for someone you may need a little extra help at home. From personal care, Carers respite to household jobs a micro-provider could be just what you're looking for! Micro-providers are providers of very small, community based care and support services.

As Village Agents, we can help connect you with the right micro-provider for your needs - and it may be that you have more than one undertaking different tasks for you, as many have different areas of expertise.

It's also a great career opportunity to become a micro-provider. It's very rewarding and worth considering if you want to start a new career or fresh challenge! You would be well supported starting up with the Somerset Micro-enterprise Project -

<https://www.somerset.gov.uk/social-care-and-health/somerset-micro-enterprise-project/> - you can become an accredited provider, decide your hours and what areas of work you want to do – call Rhys on 07788350806 for more information.

The **Crisis Fund** is distributed by our Village and Community Agents to help people in crisis situations and for whom a small grant can make a huge difference in their life

We would love to raise £5,000 in 2021 for the Crisis Fund in West Somerset,

West Somerset: <https://localgiving.org/charity/somersetcrisisfund/project/westsomersetcrisisfund/>

For free confidential advice and support telephone 07931 018045 or email Izzy Silvester on 0izzy@somerestrcc.org.uk



CHRIS GREEN MOWERS

Specialising in repairs and servicing of lawn mowers and other garden machinery.

Suppliers of spares and new machines
A collection and delivery service available

Tel: 07714 281188

Email chrisgreenmowers@hotmail.co.uk
Wibble Farm, West Quantoxhead

WOODLOUSE CONSERVATION

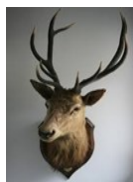
Recognised specialists in
Lime Rendering,

Lime Plastering
Building Restoration
and Conservation Projects

01984 629131

07788 810576

www.woodlouseconservation.co.uk



EXMOOR PLUMBING

Reliable plumber

No job to small

01984639629

07970632114

Radiators Cylinders

Tanks Ball valves

Bathroom Suites Taps Washers

Showers

Soil Pipes Waste Pipes Gutters

Drain Clearance

PLUMBING WORK COVERED



Pardlestone Farm

We would love to welcome your friends and family to Pardlestone Farm in Kilve where we offer bed and breakfast and a self-catering cottage – within walking distance of The Hood!

www.pardlestonefarm.co.uk

Please book online or call Mark or Ann on 01278 256629, 07721 763993 or email enquiries@pardlestonefarm.co.uk

Kelvin Henson
Painter and Decorator

Internal and External
Old, new and business premises
Property Maintenance

'35 YEARS EXPERIENCE'

Tel:-

01278 732949

Mobile

07817 641645



Purple Horse

07760 758 626

**Embroidery, Rug Cleaning
* Repairs**

sales@purplehorse.org

Personalised Embroidery

(Teamwear - Workwear - Equestrian)

Professional Rug Laundry and Repairs Service

Free Collections Available

Drop off at Williton Pet Equine



Williton Pet & Equine

Unit 11,
Roughmoor Enterprise Centre

Williton TA4 4AT

01984 631 508

www.willitonpetcare.com

Pet * Smallholder * Equestrian
Clothing for Horse & Rider
Local Delivery Available



RUSSELL H BRYANT

PROPERTY MAINTENANCE & REPAIR
TO DOMESTIC, AGRICULTURAL &
EQUINE PROPERTIES
Inc. PLUMBING REPAIRS ROOFING AND
PLASTERING

EST 1988

L.C.G.I. & A.C.I.O.B. QUALIFIED
FREE NO OBLIGATION QUOTES

01278 741054

Mobile 07787371741

email russellhbryant@yahoo.co.uk

The saying goes 'Busy as a Bee', and it certainly seems appropriate for Neil since his last contribution. I have learnt more about bees in the last four months than in the last four decades and I hope you, dear reader, you are finding it as interesting as I am. Editor

HONEYBEE DIARIES from Neil Wellum



It's been a busy month. Although temperatures are still below average, we have had some lovely sunny days, and the bees are foraging well. There has been a lot of activity from all three hives, so much so in fact that I have had to create a fourth hive. The bee population in one of my hives was growing rapidly and I noticed they were starting swarm preparations. A swarm happens when bees consider that their colony is strong enough for the queen and some of its members to go and establish another colony somewhere else. They need to ensure that they leave the colony in a good position, so they won't swarm without preparing for a new replacement queen. The workers had built a number of queen cells and the queen was laying eggs in them. If the larvae in these cells are fed royal jelly, you will have new queens emerging after 16 days, but you will lose the original queen with a prime swarm well before then.

I decided not to wait for that to happen, and carried out a control measure known as the 'artificial swarm'. There are different methods, but they all involve splitting the colony into two parts. I moved the hive about eight feet away and placed a new hive on the original position. The queen, the nurse bees and the brood stayed in the hive which was moved. The flying bees all went back to the original site because they have memorised its location. Separating the flying bees from the queen and brood stops the swarming impulse. It is the flying bees who call the shots when it comes to organising the swarm and finding a new home, and without a queen and some wax building nurse bees, the swarm cannot survive.

The flying bees quickly realise that they are queenless, so I provided them with the means to raise a new queen. I gave them a couple of frames of eggs and young larvae and the bees did the rest by making emergency queen cells. They made ten in all and I worked out roughly when the virgin queens would emerge. After that, you leave them alone and allow one of the virgin queens to mate and settle into laying eggs for the new artificially swarmed colony. There is only room for one mated and laying queen in each colony, so there is usually something of a battle royal between the emerging virgin queens until there is only one left. Sometimes, though, something different can happen. An emerging virgin queen can detect the presence of other sealed queen cells in the hive, and may think that she should swarm, as there is another queen at hand. She emits a high-pitched tooting which tells the workers not to release the other virgin queens from the brood cells. The yet-to-emerge queens will emit quacking 'let me out' noises in return.

One day, to my surprise, a reasonable sized swarm emerged. For five minutes there was the appearance of a chaotic loose cloud of bees above the hive. Gradually the cloud drifted 15 metres to the south and the swarm settled on a branch close to the ground. I managed to recover the swarm in a box and brought them back. I laid a sheet on the ground with a board sloping up to the hive entrance. I shook the swarm out of the box onto the sheet and watched in awe as a flowing mass of bees slowly walked up the board back into the hive. It's called 'walking in the swarm'. Continued>>>>>>

Next day, I listened under the hive and heard a virgin queen's persistent tooting and realised they would probably try and swarm again if I didn't do something more. So, I took a look in the hive and found three still sealed queen cells. I opened them very carefully. Two were empty, but out from one walked a healthy-looking virgin queen. She wandered off along the frame, attended by a gathering royal court of workers, without so much as a thank you! I'm hoping she will now mate and thrive. She may have had the last laugh, because the virgin queens that emerged first will probably have fought each other. (When I returned the swarm to the hive, I did glimpse a virgin queen who looked to have been fighting and was very groggy.) Trouble is the queen I released needs some fine weather so she can go on a mating flight or two and it's been raining for nearly two days now, with little sign of settled weather anytime soon. She has to mate in the first four weeks of her life or it's too late. Next time, I will be able to let you know if she has been successful. Hopefully she will.

Kilve & District W.I. from Sue Ayshford

Sadly, our WI has become a victim of the coronavirus pandemic! Our numbers have been declining over the past few years and we have tried to recruit new members but it appears that everyone is "too young for the WI"! Over the past year three of our members have died and one has gone into a home. The remaining members, especially the more mature among us, have decided not to venture out too much. This has left us with just 12 members and the committee has decided that it is not viable.

Kilve & Dist. WI was formed in 1942 and we still have a founder member - it just goes to show that living in Kilve is very good for one's health. Over the years, we have had as many as 45 members and have enjoyed a variety of speakers, been on outings, learnt lots of skills and have fully embraced this wonderful Institution. We are going to have a final get-together in June when it will be officially closed by the County Federation.

In sorting out all the paperwork I have amassed over the years as secretary, I have come across the first ever minute book. It tells us that the first meeting was held in Kilve Village Hall on Thursday 19th June 1942 at 3.15 pm and that 34 members enrolled - and remember, this was during the war when lots of menfolk were away fighting, so to get 34 ladies together was quite a feat. 12 ladies were appointed to the committee and many of the names listed are still remembered today! Mrs. T.M. Trayler was elected President. She remained in that position until November 1944 when Mrs. Dorothy M. Preedy took over.

All of this memorabilia will now be housed in the Somerset Records office (along with that already there) so that it will be saved for posterity. If anyone, in future, wants to write a history of Kilve and its activities there is a wealth of information.

We are very sad not to have made it 80 years but maybe in the future a bright young spark might like to open a new WI group. We can but hope but in the meantime as the saying goes "Thanks for the memories".



ST. MARY'S KILVE
GIFT APPEAL JUNE 13TH — JUNE 20TH

Our parish church has been a central part of village life for hundreds and hundreds of years. During this time it will have been witness to many extraordinary happenings down through the ages and history will surely record the Covid 19 pandemic as one of them. The daily well- being and maintenance of the church is the task of the Parochial Church Council and this has hinged on many fund raising events, not least the noted annual Antique and Collectors Fair. Like so many other activities, this year, once again, it was not possible to hold this event and the P.C.C. is now looking to fill the financial gap, which is particularly harsh this year, caused by its cancellation.

We are inviting you as a Kilve resident to consider a donation to our fund, so that the well-being of the church can continue.

We realise that there are many calls on the generosity of people, particularly at this time, but we would be most appreciative of any help you are able to give.

With grateful thanks

St. Mary's P.C.C.

0-0

If you would like to contribute to our Gift Appeal you are invited to put your donation in the attached envelope.

- a) If you wish for your gift to be anonymous there is no need to complete the details.
- b) If you are a U.K. tax payer, you are invited to gift aid your donation (this enables us to claim an extra 25pence for every pound). If you wish to do this you must enter your **postcode and sign the envelope.**
- c) If you would like to donate by cheque, this should be made Payable to ‘Kilve P.C.C.’
- d) If you would like to donate by bank transfer, the BACS details are Account Number 95274006 Sort Code 60 24 05(Nat West Bank)

We will regard any declaration and your donation as confidential.

Your donation envelope may be left at Kilve Stores or passed to any of the following who will also be very pleased to collect if you ask them.

Arthur & Mair Williams (741429) Roger & Pam Cuff (741229)

Frances Mayor (741268)

Simon Blackley (741549) Robbie Rutt (741594)



ALAN MANCHIP

NICEIC Approved Electrical Contractor
Domestic Commercial Industrial Agricultural
Part P Domestic Installer Inspecting and Testing
Portable appliance testing

REFRIGERATION and AIR CONDITIONING
Design Supply Install Maintain

24 HOUR EMERGENCY

CALL OUT

01278 733536

Inwood farm Nether Stowey
E mail office@alanmanchip.co.uk

**GOUDE GARDENING**

Hedges, Lawns & Tree Care
Weeding & Planting
Garden Clearance

Call Paul on
01984 631899
07804 828193

goudegardening@yahoo.com



**LOCAL HARDWOOD LOGS
DELIVERED**

£70 PER CUBIC METRE

TO ORDER OR MORE
INFORMATION

CALL
NICK THORNE

741216 or
079774501511



**NEIL COBB
GENERAL BUILDER
EXTENSIONS**

BATHROOMS
ROOFING
KITCHENS
BRICKWORK
STONE WORK
FREE ESTIMATES
TEL 01278 425740
Or Mobile 07753620961

**LAKE SIDE CARPENTRY**

Custom ~ Design ~ Build

MYLES JONES

07503 312961

lakesidecarpentry@hotmail.com
ALL ASPECTS OF CARPENTRY & JOINERY
KITCHENS
FITTED WARDROBES
WINDOWS & DOORS
RENOVATIONS &
RESTORATION



**ROBIN PARKER
TREE SERVICES**

All aspects of tree work undertaken
Felling, dismantling, pruning.
Woodland maintenance
Garden maintenance
Hedge trimming
Contact us on
01984 568047



BROWNS
Hair & Beauty

Ladies, Gents & Children
Modern & Friendly Environment
Gift Vouchers Available
Full Disabled Access

**East Street Cannington TA5
2HJ**

01278-651251

www.browns-hairandbeauty.co.uk

CHIROPODIST

Grace Brown

M Inst CH P Reg no. Ch23926

FREE CONSULTATIONS

Nail Cutting & Filing. Hard skin & Thickened Nails
Corn & Callus Removal. Ingrowing Toe Nails
Diabetic Foot Care Advice. General Foot Health

Full Disabled Access

East Street Cannington TA5 2HJ

01278 651251

www.browns-hairandbeauty.co.uk



THANK YOU TO PAUL

Saturday March 15th was quite a special day for our 'renowned postie' ~ Paul Smith. Not only was it his birthday but it was an opportunity for the village as a whole to say thank you for nearly 24 years of service. Following a suggestion in Kilve News that it would be a nice gesture to honour Paul's service to the village and pending his retirement, a collection was initiated. Some 38 households responded and on the 15th a cheque in the sum of £400 was presented to Paul, together with many plaudits for all his kindnesses as our postman here in Kilve. As was stated on the morning, there was some other good news too, in that Paul will be continuing as our postman for a little while longer, not only for personal reasons but also whilst the head office in Bridgwater re-arrange deliveries.

The following letter has been received from Paul and his wife Sandra

TO ALL MY FRIENDS IN KILVE

I would like to extend a huge and sincere thank you to the Kilve community for the kindness and generosity shown to me over my years as your Postman.

Thanks to every one of you for all your cards and gifts and your kind comments. You are a special bunch of people and I feel very humbled!

Special thanks from myself and Sandra to Robbie, for his thoughtfulness, consideration and efforts in arranging my "retirement" presentation event, which of course was done with his inimitable style and humour! It was a damp morning and thank you to everyone who turned out. I was overwhelmed.

I feel so lucky that I have truly enjoyed every day of my job and have made unforgettable friends and memories.

However, you have all made my job feel so rewarding that I feel I can't "let go" quite yet, and I intend to carry on as your postie for just a little while longer. I'm afraid you haven't seen the last of me yet!

With warm wishes to you all

Paul and Sandra

THE QUANTOCK FOODBANK

Judging by e-mails circulating in the village it would seem that other people are wishing to organise the villages' contributions to the Food Bank, and therefore after spear-heading this campaign for the last ten years, I have decided to step down. Apart from a personal thank you, two other words of thanks. To all those wonderful people who have contributed over the years a thank you from the West Somerset Food Cupboard and in latter years the Quantock Foodbank and a very special thank you from all the families in West Somerset who have benefitted from your kindness and generosity. Robbie



KILVE QUIET LANES - NEWS

We've now had time to digest the data from the Sea Lane and Hilltop Lane radar detectors that Somerset County Council installed for a week over Easter. The Hilltop camera showed very few vehicle movements, but the Sea Lane device echoed the results of our manual surveys.

The first graph showed the average number of vehicles per day and that, as we expected, weekends are the busiest times on Sea Lane, though not by a huge margin; remember, though, that the week when the survey was done, within the Easter school holidays.

The second graph showed us that the average speed of vehicles passing the radar detector, which was mounted on the 30mph road sign near Winter's Tale. The average speed was below 30mph, which may come as a surprise when many of us feel that many cars travel too fast on the lane. Only 4% of vehicles passed the detector at more than 30mph.

This data will be included into our Quiet Lanes application to Somerset County Council. The volume of traffic, and the high percentage of vulnerable road users measured in our manual survey, both fit the Quiet Lanes criteria, particularly as there are no defined pathways for pedestrians. The vehicle speed results show that **most** vehicles obey the 30mph limit of the upper half of Sea Lane, so extending the 30mph limit all the way to the Church would be a reasonable step to protect vulnerable road users without inconveniencing vehicle drivers who are mostly just driving to a beach for pleasure rather than commuting to a workplace. Extending the speed limit, as well as the Quiet Lanes signage that would be part of a successful application, would help remind the minority of drivers who drive too fast that they are putting others' lives at risk.

If it's successful, our Quiet Lanes application will not reduce the number of vehicles on Sea Lane, or the other lanes in Kilve, nor will it in any way limit the use by farm vehicles or commercial vehicles. What it will do is raise driver awareness of the risks to the many vulnerable road users on our lanes and, if we are successful in extending the 30mph limit, it would allow 'Speedwatch' surveys to tackle speeding by a small minority of drivers.

'THE HOOD ARMS' KILVE**Opening Times****BAR****Tuesday to Saturday****12 noon to 3 pm 6pm till close****Sunday****12 noon to 3pm****FOOD SERVICE****(Reservations recommended)****Tuesday to Saturday****12 noon to 2pm and 6pm to 9pm****Sunday 12 noon to 3pm****(Closed Mondays)****Tel:- 01278 741114****Website :-****www.thehoodarms.co.uk****Kilve Stores and Post Office****01278 741214****www.kilvestores.co.uk****mfhirst@hotmail.com**

Free, local home delivery service
Fresh Bakery Bread delivered daily
Fruit & Veg.

Over 65 different wines in stock

Calor & Flo Gas Stockist

Logs & Kindling

Compost available from March

Special Wine & Beer Offers

MONTHLY PREMIER SPECIAL OFFERS Cheapest Coal in the Area!

Order 10 Bags for a further 10% discount

POST OFFICE -PAY POINT**NATIONAL LOTTERY****HOME DELIVERY****OPEN****M H KELLAWAY****Chimney Sweep****Aga & Rayburn****Servicing****Wood Burners****serviced and installed****01278 741572****Chartered Architect**

*Specialising in work to historic properties
and buildings in sensitive landscape*

ALINA WISNICKA MSc Dip Arch RIBA MSc Building Conservation

Drawings for Planning

and Listed Building Consent

Working details and specification

Building Contract Management

Friendly and at reasonable ratesT:01278 741755 m:07870305309 alina@alinawisnicka.co.uk

Frenchic 
Furniture Paint®

KILVE STORES—OFFICIAL STOCK-IST

Pop into Kilve
Stores to view our range of Frenchic
Furniture Paint

We stock a wide range of paints from the
Original Artisan Range, the Lazy Range,
and the Al Fresco Range along with all
the sundry items you need including a variety of
waxes, finishing coat, Freshneen
brushes, stencils, sugar soap and lots
more!

W.W.REFURBISHING

**TILING
SKIMMING
PAINTING
Call WALDI**

ON 07837918337

BURNING COW

A FAMILY FRIENDLY CELEBRATION OF FREEDOM

SATURDAY JUNE 26TH 2PM UNTIL LATE

MUSIC UNTIL THE BURNING COWS COME HOME



CRICKET MATCH - VILLAGE
VERSUS KILVE CC

HUMAN FRUIT MACHINE

BEAT THE BATSMAN

RAFFLE

TEAS

STALL

DONNELLY (LEVELLERS, WONDER STUFF)

JON SEVINK AND DAN

BBQ AND VEGETARIAN FOOD

DISCO AND DJS UNTIL LATE

HUMAN SACRIFICE

LIVE MUSIC

LATE BAR

TICKETS FREE - PLEASE CONTACT DAN SEFTON 07887946288

ROCKY 07876747578 OR MARK WALTON 07711008304

LOCALS ONLY NO TROUBLE