



KILVE NEWS



Issue 345

May 2021



SOMERSET DAY MAY 11TH



EDITORIAL

We come up from Somerset where the
cider apples grow,
We've come to see your Majesty and how the world
do go
And when you're wanting anyone, just kindly let us
know
We'll all come up from Somerset because we love you
so

0-0-0-0-0-0-0

How be on my luvers?

I de know that some of ee aint so local
as the rest of us but we all d' live
yer, so can I ask ee all to raise a glass
or three on the 11th and give a toast to
lovely Zummerset, this beautiful
village us d'live in and all the
wonderful people us d'have as friends
and neighbours. Righty are!



Robbie

Contact the Editor on 01278 741594

Text on 07850 102874

or e-mail at davidandrobbie@talktalk.net

KILVE VILLAGE WEBSITE

www.kilvevillage.co.uk

Welcome

This month it is our pleasure to welcome Phil and
Caron Quin who have just moved in to Hazeldene in
Millands Lane. We hope very much that you enjoy a long
and happy stay in Kilve.



A real joy, at last, to be able to actually inform you all of
some events coming up....it's been a long time!

KILVE VILLAGE HALL



COFFEE MORNING
29th May from 10.30
am
(including plant sale.)



EAST QUANTOXHEAD

Court House Gardens open for the NCS scheme
on Sunday May 9th

Refreshments available from 'Dovedale'
garden [opp pond] 2-5pm
0-0-0-0-0-0-0

HOLFORD GARDENERS GROUP

PLANT SALE Saturday May 22nd 10-1

Holford and District Village Hall Carpark

'UNSUNG HEROES'

Throughout these last 12 months we have been delighted
to mention many people who have been helping out
within our community. Having been able to catch them
on 'camera' at long last, we mention, (with much
gratitude this month) Frances and Jonathan Mayor who
everyday for the last year have fetched, carried and
shopped for some of the more elderly residents in Sea
Lane. What wonderful people!



KITCHEN & BATHROOM FEATURES

Find us on <https://www.facebook.com/kandbfeatures>

SUPPLY & FIT OR SUPPLY ONLY

Kitchens, Bathrooms, En-suites, Plumbing
Floor & Wall Tiling and Electrics
Installation to the highest standard.
Fully insured & Free Quotations
Quality, at prices you can afford
Family business with over 30 years experience.
Home: 01278 651089
Mobile: 07894140533
Email: ridgmontc@yahoo.co.uk

Kilve's 'Renowned'
'Mr VIKTOR'
Reliable Carpenter
and 'Odd Job' Man
No job too small



Call VIKTOR
ON 07902327701

DATA CAB TAXIS

Doniford Watchet
4 and 7 seater taxis
16 seater Mini Bus
We can also offer
Executive Airport
Transfers
01984 639141



Jewellery repairs
and designs by
Stephen Howard

Commissions
Melts and remakes
Stone replacements
Restoration
Rhodium plating
Cleaning
FREE ESTIMATES

Find me on Facebook

The Goldbeach Studio

East Quantoxhead, by appointment. 07790 467536 | 01278 741570
goldbeach@btinternet.com | www.thegoldbeachstudio.com

WEST QUANTOXHEAD MOTORS

For all your motoring
needs

SERVICING M.O.T.

Cars, Vans 4x4s Trailers
TYRES A/C DIAGNOSTICS
COURTESY CAR

CALL BEN
for friendly advice & free quotes



BIDDISCOMBES of BRIDGWATER

Carpets & Furniture

Your local Experts
BEDS UPHOLSTERY
FURNITURE

Quality Service Value

Tel:- 01278 422364

www.biddiscombes.co.uk



Quantock Lodge Pool

Opening times 2019

Sunday 10.30 to 12.30 pm Family Swim

Monday 6.30 to 8.30 pm Lanes Swim

Tuesday 7.45 to 10.15 am Adult Swim

Thursday 7.45 to 10. am Adult Swim

6.30 to 8.15 pm Lanes Swim

Quantock Leisure Ltd.

Over Stowey

01278 733375

info@quantocklodge.co.uk



PARKE PLUMBING AND HEATING

Professional & reliable Plumber
Qualified in oil, gas and LPG
Boiler servicing, installation and
breakdown repairs
Bathrooms, radiators & system upgrades
01278 741723
07860 553704
parkeph@gmail.com

TWENTY FIVE YEARS AGO

From Issue 90 April 1996

It was reported that local resident Dennis Tomlinson had completed the London Marathon.. Dennis completed the race in 3 hours and 7 minutes, finishing in 1571st place out of a field of some 26,143 competitors, and in so doing, raised £250 from sponsorship, the monies being donated to the church tower restoration fund.

READING GROUP

from Sue Hares

For the latest book chosen, the Group took a nostalgic trip and read an Agatha Christie Miss Marple mystery. Some younger members were new to Agatha Christie! However it proved to be a total disappointment. The best thing to be said about it was it's short length! Sorry Agatha. Maybe we have been spoilt by some excellent TV adaptations and it did make us appreciate how fortunate we are now with such a wonderful selection of authors from which to choose. The Group will continue with meetings on Zoom until such time as "normal" life resumes! Unfortunately, the Group is at full capacity and there is currently a waiting list.



OUR NEXT ISSUE

Our next issue will be for June Contributions for the 346th edition to Robbie, or the Village Stores (marked Kilve News)



Please note NO LATER THAN MAY 15th

If you have reports, adverts or contributions to hand before the deadline please let us have them as soon as possible. It greatly helps having them well in advance of the 15th

DOGS ON LEADS...PLEASE!

Following a recent incident, we have been asked by Kilve Court to make a specific request to all dog owners who use the permissive path adjoining the A39 to ensure that dogs are kept on leads at all times. Thank you.



THE QUANTOCK FOODBANK

In thanking you all for your support, may I remind everyone that donations may be left at Kilve Stores and, as usual, I am very happy to collect at anytime.

Robbie



PAUL SMITH

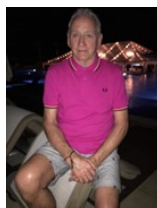
A big thank you to all of you who responded to our suggestion that a presentation should be made to our wonderful retiring postman Paul Smith.

We have arranged that the presentation will be made to Paul on the morning of

Saturday May 15th

This will take place in the Village Hall Garden at 11.15 am (we can seek refuge in the Hall should the weather be inclement) and all residents are cordially invited to come along, give thanks and say their farewells.

If you would still like to be associated with this retirement gift, donations may be left at the shop (addressed to Robbie) or, as always I am most happy to collect. Thank you.



CRICKET—LOVELY CRICKET!

Kilve Cricket Club is pleased to announce that their first social event of the year has been planned for

Saturday 26th June. The ground will

host a match between Kilve Cricket Club and a Kilve Village X1. There will be a BBQ, side stalls and entertainments. There will also be live music after the match and then a disco.

No tickets are required for the event and no charge for entry, the Club very much want the day to be a thank you after such a strange 12 months. Of course, the Club is subject to the government time lines for the easing of restrictions but they are optimistic of a really brilliant day out.

A note from the Editor:-

With the cricket season upon us I was interested to read in 'The Times' an article following Jofra Archer's (the England fast bowler) need to have surgery after cutting his finger on a fish tank in the bath while trying to clean it. He joins a noble line of cricketers who have suffered unusual injuries, such as Derek Pringle, who threw his back out stuffing an envelope, Chris Old, who cracked a rib with a sneeze, and Jimmy Adams who severed tendons while making a sandwich, mistaking his arm for a baguette!! No one, however, quite matches up to Ted Dexter, the former England captain, who was flattened by his own car in 1965. Having run out of petrol, he tried to push it to a garage, lost control and had it roll back and pin him against a factory gate, breaking his fibula.

Out, leg before wicket, I guess.!

Take care you cricketers!



West Somerset bike project

The extremely successful 'West Somerset Bike Project' has gained additional funding from Somerset West and Taunton Council using money from the Hinkley Point C Fund.



The project started from a simple idea; match someone who was able to donate a bike (that they did not use any more) and give it to someone who needed it. So that the bike was safe, a bike mechanic checked the bike over, made small repairs, added a helmet, lock and lights and the bike was ready to go! So far, the project has shared 100 bikes and now there is funding for 40 more.

The funding for this round of bikes is being offered to people who need a bike to access **work, education, or training**. That might mean needing a bike to attend an interview, take up a job offer or attend college or an apprenticeship.

The project wants to ensure that the bikes go to those people who need them most and are hoping to harness and work alongside the amazing work of agencies across the West Somerset area to ensure that anyone who might need transport can be referred easily. Email izzy@Somersetccc.org.uk with the contact details of anyone interested in accessing the scheme will mean that someone will be in touch to discuss their needs. It is important that they meet the criteria for needing the bike to access education, work, or training.

For the project to work, we still need donation of bikes (of reasonable quality) so if you know of anyone who has a bike that is unused at the moment, please get in touch. If you have a bike to donate, please get in touch with CCS Village Agent Izzy via email izzy@Somersetccc.org.uk with your name and phone number and a brief description of the bike or call **07931 018 045** to arrange for a free collection.



CHRIS GREEN MOWERS

Specialising in repairs and servicing of lawn mowers and other garden machinery.

Suppliers of spares and new machines
A collection and delivery service available

Tel: 07714 281188

Email chrisgreenmowers@hotmail.co.uk
Wibble Farm, West Quantoxhead

WOODLOUSE CONSERVATION

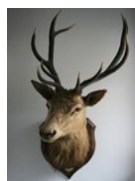
Recognised specialists in
Lime Rendering,

Lime Plastering
Building Restoration
and Conservation Projects

01984 629131

07788 810576

www.woodlouseconservation.co.uk



EXMOOR PLUMBING

Reliable plumber

No job to small

01984639629

07970632114

Radiators Cylinders

Tanks Ball valves

Bathroom Suites Taps Washers

Showers

Soil Pipes Waste Pipes Gutters

Drain Clearance

PLUMBING WORK COVERED



Pardlestone Farm

We would love to welcome your friends and family to Pardlestone Farm in Kilve where we offer bed and breakfast and a self-catering cottage – within walking distance of The Hood!

www.pardlestonefarm.co.uk

Please book online or call Mark or Ann on 01278 256629, 07721 763993 or email enquiries@pardlestonefarm.co.uk

Kelvin Henson
Painter and Decorator

Internal and External
Old, new and business premises
Property Maintenance

'35 YEARS EXPERIENCE'

Tel:-

01278 732949

Mobile

07817 641645



Purple Horse

07760 758 626

Embroidery, Rug Cleaning

*** Repairs**

sales@purplehorse.org

Personalised Embroidery

(Teamwear - Workwear - Equestrian)

Professional Rug Laundry and Repairs Service

Free Collections Available

Drop off at Williton Pet Equine



Williton Pet & Equine

Unit 11,
Roughmoor Enterprise Centre

Williton TA4 4AT

01984 631 508

www.willitonpetcare.com

Pet * Smallholder * Equestrian
Clothing for Horse & Rider
Local Delivery Available



RUSSELL H BRYANT

PROPERTY MAINTENANCE & REPAIR
TO DOMESTIC, AGRICULTURAL &
EQUINE PROPERTIES
Inc. PLUMBING REPAIRS ROOFING AND
PLASTERING

EST 1988

L.C.G.I. & A.C.I.O.B. QUALIFIED
FREE NO OBLIGATION QUOTES

01278 741054

Mobile 07787371741

email russellhbryant@yahoo.co.uk

KILVE GARDEN GROUP

Eager as always and, after having nearly a year off from gardening, we were FINALLY able to start 'tackling' the Village hall garden again.

I hope you have been out and seen the hard work that all of our volunteers have put into the garden; preparing for the re-opening of the hall and the hotter months that are on the way.

We've really enjoyed hearing from the residents who have been enjoying the garden and those that have had a socially distanced coffee there with friends. There are a few plans in the pipeline which we're very excited about and look forward to the garden being further developed.

If you wish to get involved, please call either myself, Kelly (741149), or Sally (741770).



On the subject of gardening you may be interested to know that Alicante and Moneymaker tomato plants are available to grow on in a greenhouse or summerhouse. Already in 3" pots, they are priced at £1 each with the proceeds to be split between the village hall and St Mary's Church. Available now. To arrange collection and payment call Joy and Colin Orritt on 741672 or 07711317903



ANOTHER 'GOLD STAR' FOR KILVE COURT

We were 'privy' to a posting on Facebook which revealed that Kilve Court had been hosting a thank you to Somerset education staff and their families.

'We have loved having Somerset education staff visit us with their family bubbles as a 'thank you' for all the incredible work they have done over the last year, we were just sorry we couldn't fit you all in!

Bravo to all the teachers and support staff who have kept learning going in all sorts of new and creative ways in the most difficult of circumstances!'

To all our friends up at the 'Court'...well done!

Kilve Village Hall News MESSAGE FROM THE CHAIR

The Hall has remained closed during the COVID-19 lockdowns and will next be open for voting in the local elections on the 6th May. The committee meet again in mid April and agreed the opening of the Hall for a coffee morning (plus plant sale) on the 29th May.

Contributions of plants, cuttings, seedlings etc. prior to the event would be much appreciated and any committee member can be contacted to arrange collection.

The committee would also like to thank the W.I. for their kind donation from their "winding up funds" to the Village Hall.

Any comments or enquiries in the meantime can be addressed to chairkvh@gmail.com
Regards Tony

COFFEE MORNING – 29th May (including plant sale.)

100 Club

A fundraiser for the Village Hall, this monthly draw offers a lucky punter the chance to scoop the jackpot.

The 100 club is a way of paying some of the running costs of our fantastic village hall!

Just £2 a month gets you one number in the draw; 50% goes to the hall and 50% in prizes.

There are two prizes each month, drawn on the last Saturday of each month at the Village Hall Coffee Morning and a new period will begin in July.

Kilve residents can join at the coffee morning, at Kilve Stores or ring Claire Heather on [01278 741654](tel:01278741654) (Direct debit scheme or via cheque payable to 'Kilve Village Hall').

The draw continues to be made remotely at the moment via a random number generator and the winners for March 2021 were:

Sheila Pickering and Ray Franklin

ST.MARY'S KILVE

We hope to be able to reopen St Mary's Church Kilve as usual this Summer, and, if so, we really need to restart a church cleaning rota! As we have had no response from our earlier plea we are asking once again if anyone is

a) willing to go on the cleaning rota (the more volunteers we get the less often our turn comes round!!) and
b) if anyone is willing to take on the organising of the cleaning rota please? If so, or should you want more details, please contact

Pam Cuff on 01278 741229, or email pam.cuff@hotmail.co.uk



ALAN MANCHIP

NICEIC Approved Electrical Contractor
Domestic Commercial Industrial Agricultural
Part P Domestic Installer Inspecting and Testing
Portable appliance testing

REFRIGERATION and AIR CONDITIONING

Design Supply Install Maintain

24 HOUR EMERGENCY

CALL OUT

01278 733536

Inwood farm Nether Stowey

E mail office@alanmanchip.co.uk

**GOUDE GARDENING**

Hedges, Lawns & Tree Care
Weeding & Planting
Garden Clearance

Call Paul on

01984 631899

07804 828193

goudegardening@yahoo.com



**LOCAL HARDWOOD LOGS
DELIVERED**

£70 PER CUBIC METRE

TO ORDER OR MORE

INFORMATION

CALL

NICK THORNE

741216 or

079774501511



**NEIL COBB
GENERAL BUILDER
EXTENSIONS**

BATHROOMS

ROOFING

KITCHENS

BRICKWORK

STONE WORK

FREE ESTIMATES

TEL 01278 425740

Or Mobile 07753620961

**LAKESSIDE CARPENTRY**

Custom - Design—Build

MYLES JONES

07503 312961

lakesidecarpentry@hotmail.com
ALL ASPECTS OF CARPENTRY & JOINERY
KITCHENS
FITTED WARDROBES
WINDOWS & DOORS
RENOVATIONS &
RESTORATION



**ROBIN PARKER
TREE SERVICES**

All aspects of tree work undertaken

Felling, dismantling, pruning.

Woodland maintenance

Garden maintenance

Hedge trimming

Contact us on

01984 568047



BROWNS
Hair & Beauty

Ladies, Gents & Children
Modern & Friendly Environment
Gift Vouchers Available
Full Disabled Access

**East Street Cannington TA5
2HJ**

01278-651251

www.browns-hairandbeauty.co.uk

CHIROPODIST

Grace Brown

M Inst CH P Reg no. Ch23926

FREE CONSULTATIONS

Nail Cutting & Filing. Hard skin & Thickened Nails

Corn & Callus Removal. Ingrowing Toe Nails

Diabetic Foot Care Advice. General Foot Health

Full Disabled Access

East Street Cannington TA5 2HJ

01278 651251

www.browns-hairandbeauty.co.uk

Continuing the lovely stories of the:- HONEYBEE DIARIES from Neil Wellum

I've been able to take advantage of the few warm sunny days amidst the cold to take my first thorough look at the three honeybee hives. To my relief, the colonies seem to be doing well.



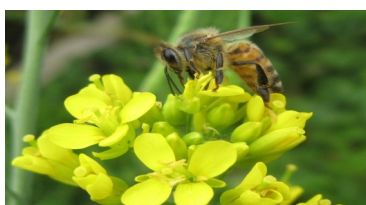
The first hive inspection of the year is an important one. You want to see how they have fared over the winter and make sure they are not showing any signs of disease. It's also an opportunity to change any old parts of the hive for new. I replaced the hive floors and will clean up the old ones for next season. I also replaced a few dirty old frames of comb. I managed to find all three queens and they were laying well. There were quite a lot of young larvae present in their individual comb cells, the older ones sealed in with wax caps, and lots of tiny eggs. Even if you can't find the queen, if you see eggs, it means she has been laying very recently. It is standard practice to mark a queen with a dab of paint on the top of the thorax, to make it easier to spot her when you do an inspection. The paint colour changes each year so you can see at a glance how old each queen is. A colony will tend to be more successful and settled if it has a young queen less than two years old.

One of the big tasks I need to try and manage from now until the end of July is the honeybees' natural and strong impulse to swarm. I can only describe a swarm as being a wonderful sight and sound; it's a real force of nature. There is a swirling noisy mass of bees that is assembling to move on to a new home that has been pre-selected and agreed upon democratically within the swarm. Yes, amazing isn't it? The small number of bees who are in the know about the location of the new home have the responsibility of getting the rest of them safely there. The temper of bees in a newly issued swarm is usually very benign, though it may not sound it! It is more a case of Corporal Jones' "Don't panic", rather than Private Fraser's "We're all doomed"! The bees in a swarm are gorged on honey so that they can make new wax comb for the queen to lay eggs just as soon as they move in and we all know how good a lovely meal makes you feel.

The best thing to do, if you ever see a swarm, is keep a respectful distance and call a local beekeeper. There are a network of swarm collectors online, unless you know someone local. Beekeepers get a lot of false alarms, whether it is wasps, or just a lot of bees feeding on blossom.

Swarming is the sign of a successful colony. They want to reproduce at colony level if they can, but it doesn't help the beekeeper get a good crop of honey. There are various things you can do to try and prevent or control swarming, but none of them are guaranteed 100% successful. I looked at the hives closely yesterday and the number of bees is growing rapidly now. There were no signs that swarming preparations have started in earnest, but I took a few swarm prevention measures as a precaution.

Now it is a case of weekly inspections to see how the population develops. Hopefully, by the time of the main nectar flow in summer (you remember summer?) I will have managed the swarm impulse successfully and have three strong colonies ready to take advantage of the nectar and make some honey.



BUILT TO LAST!



They don't build them like this today! The renovations been carried out at Putsham Farmhouse have caused a great deal of interest. Sheila and Steve Collins have just had the exterior exposed before a new rendering of lime mortar is applied. To the 'uninformed eye', one would be excused in thinking that the whole structure would tumble down any minute! Don't you believe it!..... This lovely Grade 2 listed building, certainly one of the oldest in Kilve has been standing there, resplendent, for over 360 years!

(Whilst on the subject of 'old buildings' I did mention in my article on the 'Chantry' back in April that I hoped to bring you more news about what actual restoration was expected. I have found out that it is 'Historic England' in charge, that they have secured enough funds to make an appreciable difference to the current look of the Chantry. I have 'Moriarty' on the case and will hopefully tell you more next month. Robbie)



Written by children.....

How do you decide who to marry?

Kirsten aged 10 replied:-

No person really decides before they grow up who they are going to marry. God decides it all way beforehand and you get to find out later, who you're stuck with!

Is it better to be single or married?

Anita aged 9 replied:-

It's better for girls to be single but not for boys. Boys need someone to clean up after them.

How would you make a marriage work?

Ricky aged 10 replied:-

Tell your wife that she looks pretty, even if she looks like the back end of a truck!

What would you do on a first date that was turning sour?

Craig aged 9 replied:-

I'd run home and play dead. The next day I would call all the newspapers and make sure they wrote about me in all the dead columns!

To finish with this particular group of children were asked :- What do most people do on a date?.

Lynette aged 8 replied:-

Dates are for having fun, and people should use them to get to know each other. Even boys have something to say if you listen long enough!



'THE HOOD ARMS' KILVE**Current Opening Times****Friday lunch** 12-2.30pm food (close 3pm)**Friday evening** 5.30 - 8pm food (close 11pm)**Saturday lunch** 12-2.30pm food (close 3pm)**Saturday evening** 5.30pm 8pm (close 11pm)**Sunday lunch** 12-30pm (close 4pm)**0-0-0-0-0-0**

We are still offering takeaway, the menu for the garden is the same as the takeaway menu.

We would recommend you book a table, but you don't have to.

Tel:- 01278 741114**Website :-****www.thehoodarms.co.uk****M H KELLAWAY****Chimney Sweep****Aga & Rayburn****Servicing****Wood Burners****serviced and installed****01278 741572****Chartered Architect**

*Specialising in work to historic properties
and buildings in sensitive landscape*

ALINA WISNICKA MSc Dip Arch RIBA MSc Building Conservation

Drawings for Planning
and Listed Building Consent
Working details and specification
Building Contract Management

Friendly and at reasonable ratesT:01278 741755 m:07870305309 alina@alinawisnicka.co.uk**Kilve Stores and Post Office****01278 741214****www.kilvestores.co.uk****mfhirst@hotmail.com**

Free, local home delivery service
Fresh Bakery Bread delivered daily
Fruit & Veg.

Over 65 different wines in stock

Calor & Flo Gas Stockist

Logs & Kindling

Compost available from March

Special Wine & Beer Offers

MONTHLY PREMIER SPECIAL OFFERS

Cheapest Coal in the Area!

Order 10 Bags for a further 10% discount

POST OFFICE -PAY POINT**NATIONAL LOTTERY****HOME DELIVERY****OPEN****MON — FRI 7.30am - 5.00pm****SAT 8.00am - 5.00pm****SUN 9.00am - 1.00pm**

Frenchic 
Furniture Paint®

KILVE STORES—OFFICIAL STOCKIST

Pop into Kilve Stores to view our range of
Frenchic Furniture Paint

We stock a wide range of paints from the Original
Artisan Range, the Lazy Range, and the Al Fresco
Range along with all the sundry items you need
including a variety of waxes, finishing coat,
Freshneen brushes, stencils, sugar soap and lots
more!

**Pop in and have a look and join the Frenchic
Craze!**

Contact us on**01278 741214 Or 07766018847****Facebook Kilve Stores and Post Office****W.W.REFURBISHING**

**TILING
SKIMMING
PAINTING
Call WALDI
ON 07837918337**





As promised in the last issue of Kilve News, the work on the Quiet Lanes initiative is continuing and we have just completed a vital step in the project. Radar counters have been mounted on posts on both Sea Lane and Hilltop Lane and, at time of writing, we await the results of vehicle numbers and speeds from Somerset County Council. We've also carried out some less high-tech vehicle monitoring over two days, thanks to the splendid help from several volunteers.

We logged every user of Sea Lane, as well as those coming down Hilltop Lane, for 7 hours on Easter Sunday and again on the following Wednesday. Unlike the radar counters, this manual count allowed us to differentiate between the different types of vehicle and to count 'vulnerable road users' – walkers, cyclists, horse riders and those using wheelchairs or mobility scooters. We thought you'd be interested to see the results, which are summarised in the graph.

We only counted traffic moving towards the beach between 08.30 and 15.30 but the numbers show that the proportion of vulnerable road users, as a percentage of total traffic, was 18% on Easter Sunday and 29% on the Wednesday.

We'll be adding this data to the radar counter results in our Quiet Lanes application and will report back on the next stage of the project as soon as we have more news to share.

Huge thanks are due to all the volunteers who braved the chilly winds to gather all this information – from Kilve they were: Trevor & Margaret Stanton, Sheila Collins, Karen Scott, Ian Pickering, Tessa Franklin, Mark Belcher, Bruce Eyley, Ann Hardy, Pat Woolley, Sarah & Pat Hayward, Graham & Dianne Keating, Mair Williams, Robbie Rutt and Greg Glendell. We were delighted to also have Mike & Kate Coplestone from Holford here to help as well. **THANK YOU** all for your valuable assistance.

Kilve Quiet Lanes

S	H	A	R	E	D	S	P	A	C	E	I	B	N
A	P	N	N	L	D	H	O	R	S	E	Y	E	H
C	O	U	N	T	R	Y	S	I	D	E	S	A	D
H	S	E	S	G	N	I	R	A	C	V	S	U	S
U	S	S	G	E	F	A	S	D	P	E	Y	T	R
R	E	I	C	I	N	H	O	E	N	R	A	I	P
C	Y	C	H	H	S	A	D	N	N	G	W	F	O
H	T	R	A	T	O	E	L	G	B	E	H	U	T
I	E	E	N	G	S	O	A	T	L	S	G	L	L
L	F	X	T	T	D	H	L	L	E	E	I	R	L
D	A	E	R	Y	O	J	N	E	A	I	H	H	I
R	S	I	Y	H	T	L	A	E	H	N	U	R	H
E	A	S	P	E	E	D	I	N	G	H	E	Q	E
N	T	L	P	A	R	D	L	E	S	T	O	N	E

QUIET LANES
SPEEDING
SHARED SPACE
CHURCH
PARDLESTONE
AONB
BEAUTIFUL
SAFETY
COUNTRYSIDE
SCHOOL
HORSE
CHILDREN
PEDESTRIAN
HEALTHY
HILLTOP
CHANTRY
VERGES
HIGHWAYS
ENJOY
SEA LANE
CARING
EXERCISE

Can you find all the words? A little 'topical' fun for you and perhaps the whole family! All the words in the right hand column are 'hidden' in the box. They can be solved across, up and down, diagonally etc. Good luck.

Sea Lane Traffic Survey, Sunday 4th & Wednesday 7th April

