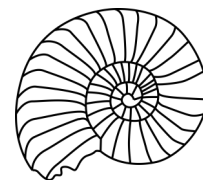


---

---

# KILVE NEWS



---

Issue 361

October 2022

---

## EDITORIAL

Pleas for help this month: a questionnaire about transportation for you to complete (see p3 for an explanation), and a standing order form for the Village Hall 100 Club (needs no explanation, just your support).

When we were house-hunting, before we moved to Kilve, one of our criteria for a village was that it must have a shop. We looked in villages without shops, which had become dormitories for local towns; they had very little soul or sense of community. A shop is one of the factors helping to cement village life: using it means that you don't have to drive 10 miles to buy something for lunch, you can catch up on the local news with the staff and other customers, and until you look you never know what unexpected treat you might find on the shelves. As you will see from Matt's piece on p5, village shops are currently under immense pressures which we probably don't appreciate from the outside. We don't want to lose the shop, so, please, use it!

Finally, what does Australia have that Kilve doesn't? The answer, for at least four currently absent residents, is their daughters.

*Jenny*

**Contact the Editor on 01278 741663**

**e-mail [jakent@btinternet.com](mailto:jakent@btinternet.com)**

**or text on 07745 805006**

## THANK YOU

After a number of years delivering Kilve News to the Rowditch Lane, Kilton Road and Puttenham Hill end of the village, Mike and Shirley Dixon have decided to bring their delivery days to an end. We are very grateful for all their efforts over the years; it isn't the most straightforward of rounds! Luckily, Steve Collins has volunteered to take over and will be delivering from this month. Many thanks to all three of you.

---

## HARVEST FESTIVAL

On the right are pictured just some of the gorgeous creations made by St Mary's flower group to celebrate harvest festival.

Joy and I would like to thank everyone involved in donating flowers, greenery and produce and making St Mary's church look even more beautiful.

*Sally Quinn*



## QUEEN ELIZABETH II

1926 – 2022

I am sure we have all been moved by the events of the last few weeks since the death of Her Majesty Queen Elizabeth II on 8 September. It is difficult to believe that only three months earlier we were celebrating her Platinum Jubilee. Her Majesty's dedication and continuous hard work were clear for everyone to see throughout her life, right until the end, as instanced by the letter below, which was received less than three weeks before her death.



BALMORAL CASTLE

20<sup>th</sup> August 2022

Dear Mr Rutt

The Queen wishes me to thank you for your recent letter with which you kindly enclosed a copy of the splendid souvenir brochure, produced by the village of Kilve.

Her Majesty greatly appreciated your thought in writing as you did, as Chair of the Kilve Jubilee Committee, and The Queen was interested to see the brochure featuring Kilve's many festive events to mark the Platinum Jubilee, and also the poem, 'I wonder how The Queen', written by Charlotte Scott.

Her Majesty has been deeply touched by the support and affection she has received throughout her long reign, and I am to thank you and all the residents of Kilve very much for your loyal greetings and warm good wishes at this time.

Yours sincerely  
Annabel Whithead

Lady-in-Waiting

Mr C R Rutt



## FURTHER RECOLLECTIONS OF KILVE

Mary Grace's 'Recollections of Kilve' reminded me of my first trip to Kilve, also in 1954, whilst on a cycling holiday.

A school friend and I, both aged 16, decided to cycle from South London to Cornwall and back, in the days when the roads were a good deal safer for cyclists.

We left London and followed a southern route, always staying overnight in Youth Hostels. Memorably we stayed at a converted mill in Winchester, travelled on to Dorset and into Devon. I'll always remember the long road across Dartmoor to Tavistock, uphill all the way, with several punctures that had to be mended on the road. We eventually made it to Tintagel, our furthest West Point.

We returned on a northern route and rode across Exmoor (where we overdosed on whortleberries!) and eventually found the Youth Hostel at the top of Pardlestone Lane, where we enjoyed a short stay. I well recall riding across the Quantocks where we met a group of girls, also on a cycling tour. They were, coincidentally, members of Herne Hill Harriers from South London. They cycled a lot faster than we did and we couldn't keep up with them!

From Kilve we travelled east to Street and then cycled as far as Wokingham in Berkshire. By this time the bikes were showing signs of wear and tear, Terry and myself weren't much better so for the final part of our journey we put the bikes on the train and gave our legs a well earned rest. This was a great summer adventure for two 16 year old boys in the mid 1950's. Little did I know that I would eventually come to live in Kilve, having moved to Higher Hill in 1985.

*Ray Franklin*

## HOLFORD GARDENERS GROUP



### **Otters**

**a talk by Ian Anderson**

Tuesday 18 October 7.30pm  
Holford and District Village Hall  
Members £1.00 Visitors £2.00  
All Welcome

## Quantock u3a monthly meeting

**Monday 24 October 2 pm**  
**Stogursey Village Hall**

### **Hinkley Point C: Meeting the challenges of climate change and energy security**

A talk by Jessica Harris, Environmental Engineer,  
Hinkley Point C



Hinkley Point C represents a vital part of Britain's low-carbon energy future whilst also reducing our reliance on fossil fuels. This talk will provide an update on the construction process, and also consider Hinkley Point C's part in meeting the pressing economic and energy challenges we see today.

Members and non-members very welcome

## CRISIS CONTINGENCY PLANNING

Remember Storms Dudley, Eunice and Franklin? I don't think anybody living in Kilve last February will forget them! Although we coped remarkably well with the disruption on the whole, it was very much on an ad hoc basis, and a few things fell through the gaps.

The Parish Council has decided that it would be helpful to plan for a more organised and constructive response to any future crises affecting the village (long-term power cuts or floods, for example).

A committee of volunteers is now developing such plans, in order to make sure that the village is as resilient as possible, and that anybody who needs help will receive it.

The plans will cover such aspects as equipment, transport, and communications both within the village and with essential services. When the plans are finalised, every household in the village will be given a document setting out what to do and who to contact in the event of an emergency.

The committee members are Steve Collins, Elizabeth Grigg, Brian House, Trish Martin, Simon Oliver and Jenny Kent. Please contact any member of the committee if you have any suggestions that would help in their work.

An initial questionnaire regarding transportation is attached to the back of this issue of Kilve News. It would help greatly with planning if you could complete and return it by Tuesday 1 November.

### **KITCHEN & BATHROOM FEATURES**

Find us on <https://www.facebook.com/kandbfeatures>

#### **SUPPLY & FIT OR SUPPLY ONLY**

Kitchens, Bathrooms, En-suites, Plumbing  
Floor & Wall Tiling and Electrics  
Installation to the highest standard.  
Fully insured & Free Quotations  
Quality, at prices you can afford  
Family business with over 30 years' experience.

Home: 01278 651089  
Mobile: 07894 140533  
Email: [ridgmentc@yahoo.co.uk](mailto:ridgmentc@yahoo.co.uk)

### **Kilve's Renowned 'Mr VIKTOR'**



Reliable Carpenter  
and Odd Job Man  
No job too small

Call VIKTOR  
ON 07902 327701

### **DATA CAB TAXIS**

Doniford Watchet  
4 and 7 seater taxis

We can also offer Executive Airport Transfers

01984 639141



### **BIDDISCOMBES of BRIDGWATER**

Carpets & Furniture

Your local Experts

**BEDS UPHOLSTERY  
FURNITURE**

Quality Service Value

01278 422364

[www.biddiscombes.co.uk](http://www.biddiscombes.co.uk)



### **WEST QUANTOXHEAD MOTORS**

For all your motoring needs

**SERVICING & M.O.T.**

Cars Vans 4x4s Trailers

TYRES A/C DIAGNOSTICS

COURTESY CAR



**CALL BEN**

for friendly advice & free quotes

01984 632437

or 07799 584700

### **PARKE PLUMBING AND HEATING**

Professional & reliable Plumber

Qualified in oil, gas and LPG

Boiler servicing, installation and breakdown repairs

Bathrooms, radiators & system upgrades

01278 741723

07860 553704

[parkeph@gmail.com](mailto:parkeph@gmail.com)

### **Quantock Lodge Pool**

**Opening times 2022**

Sunday 10.30 am to 12.30 pm Family swim

Monday 6.30 to 8.15 pm Lane swim

Tuesday 7.30 to 10 am Adults and toddlers swim

Wednesday 7.30 to 10 am Adults and toddlers

Thursday 7.30 to 10 am Adults and toddlers

Thursday 6.30 to 8.15 pm Lane swim

Quantock Leisure Ltd.

Over Stowey

01278 733375

[info@quantocklodge.co.uk](mailto:info@quantocklodge.co.uk)



**Jewellery repairs  
and designs by  
Stephen Howard**

Commissions  
Melts and remakes  
Stone replacements  
Restoration  
Rhodium plating  
Cleaning  
FREE ESTIMATES

[Find me on Facebook](#)

## **The Goldbeach Studio**

East Quantoxhead, by appointment. 07790 467536 | 01278 741570  
[goldbeach@btinternet.com](mailto:goldbeach@btinternet.com) | [www.thegoldbeachstudio.com](http://www.thegoldbeachstudio.com)

## KILVE STORES NEWS

2022 has certainly been a very up and down year. As autumn and winter are fast approaching, I wanted to reach out to our local customers to raise awareness on how the shop and Post Office sit in this current, unpredictable climate.

A year or so ago we were making respectable profit margins for a village shop on most of the items we stocked. Our suppliers were consistently holding prices steady, there were no minimum order fees or delivery costs, and electricity was considered a stable market.

And then, without much warning, **BOOM!!!** Everything has been turned upside down in a very short space of time.

Due to constant (sometimes daily) supplier increases our profit margins have dropped quite alarmingly.

Most of the items we sell in the shop are price-marked. This is great for the customer because price-marked products represent better value for money, but unfortunately it also means we can't raise prices on these items to cover the increases on our overheads.

We have seen significant increases in electricity, debit and credit card transaction fees, fuel, supplier delivery charges. Booker, our main supplier, now charges £30 per delivery; this equates to an extra £1560 per year if we have a weekly delivery! Our newspaper supplier charges £49 per week in delivery fees.

The *Premier* symbol group used to be owned by Booker Wholesale and was bought out by Tesco a few years ago. You will notice that the *Happy Shopper* range of products is being phased out and replaced with *Jacks* which is part of the Tesco family.

You may also have noticed that the ever-popular special offer shelves are not what they used to be. The new approach by Booker and Tesco is to focus on keeping everything in-store as competitively priced as possible, rather than ploughing budgets into special offers.

We still have lots of fantastic deals each month at very low prices and 'buy one get one free' deals, we just don't have the volume of offers we used to have.

To be fair, I think cheaper more competitive prices throughout the shop are better than a load of random offers no one's interested in.

I'm afraid we can't rely on selling a few newspapers these days: a Daily Mail contributes 17p a day profit, the I Paper makes us 13p for a weekday copy and so on. You can see that newspapers are more of a service than a profit maker! (Especially as it costs £49 to have them delivered each week.)

During the pandemic we were so busy, seven days a week, it was manic. From a business point of view, it was fantastic seeing our little village shop thriving everyday with all our locals.

We worked tirelessly every day, late into the evening, trying to source all the items the supermarkets had run out of. If you remember, Kilve Stores had toilet roll, flour,

yeast, paracetamol, pasta and many more items!

During this period our weekly takings went up substantially. We wondered whether covid and the lockdowns would have a long-term positive effect on the shop and people would realise how vital the village store is within our community, not just for day-to-day life but for when we're completely snowed in, or heaven forbid a repeat of 2020!

Unfortunately, this hasn't been the case, most people have slipped back into old habits and reverted to pre-covid days.

I know we have had a lot of new people move into the area who maybe don't understand or appreciate the history and importance of Kilve Stores, and how many people who don't drive any more rely on the shop, especially with very limited public transport these days.

Having a Post Office within our store is invaluable to many of our locals to enable them to withdraw cash or pensions, deposit cheques or cash, pay bills, send letters and parcels, or return online shopping. With the banks closing most of their branches locally, the Post Office is more important than ever!

I've seen how quickly village shops can go into decline and almost close overnight with little or no warning. Some of you will remember when I bought the shop in 2007, it was on the brink of bankruptcy. If I hadn't bought it fifteen years ago, I'm guessing there would be no vital Post Office, and Kilve Stores would just be a residential house now!

We really need your support, now more than ever. Maybe, if you can, pick up a basket of groceries a couple of times each week; if you work during the week pop in at the weekend and do a bit of shopping.

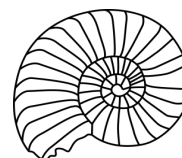
Encourage people new to the area to shop at Kilve Stores, visit the shop weekly and daily if that's possible, make full use of the Post Office. Any extra money you spend with us each week will make such a huge difference and hopefully help towards our rising costs and safeguard Kilve Stores for the future.

We are constantly working hard behind the scenes to negotiate better prices with suppliers and searching for new ones, and doing our best to cut costs and increase profit margins, and where possible to support other local businesses who are also struggling.

Many thanks in advance for your support and understanding and taking the time to read this piece.

We're always happy to chat to people about the shop, this piece, and how the current climate is affecting us and all the small, local businesses we buy from.

*Matt and Charlotte Hirst*





### CHRIS GREEN MOWERS

Specialising in repairs and servicing of lawn mowers and other garden machinery.

Suppliers of spares and new machines  
A collection and delivery service available

07714 281188

Email [chrisgreenmowers@hotmail.co.uk](mailto:chrisgreenmowers@hotmail.co.uk)  
Wibble Farm, West Quantoxhead

## WOODLOUSE CONSERVATION

Recognised specialists in

Lime Rendering

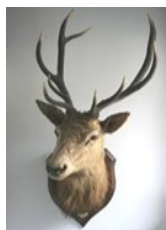
Lime Plastering

Building Restoration  
and Conservation Projects



01984 629131 07788 810576

[www.woodlouseconservation.co.uk](http://www.woodlouseconservation.co.uk)



### EXMOOR PLUMBING

Reliable plumber  
No job too small

01984 639629

07970 632114

Radiators Cylinders Tanks Ball valves  
Bathroom suites Taps Washers Showers  
Soil pipes Waste pipes Gutters  
Drain clearance

**PLUMBING WORK COVERED**

## Pardlestone Farm

We would love to welcome your friends and family to Pardlestone Farm in Kilve where we offer bed and breakfast and a self-catering cottage – within walking distance of The Hood!



[www.pardlestonefarm.co.uk](http://www.pardlestonefarm.co.uk)

Please book online or call Mark or Ann on  
01278 256629, 07721 763993 or email

[enquiries@pardlestonefarm.co.uk](mailto:enquiries@pardlestonefarm.co.uk)

Pardlestone Farm, Pardlestone Lane, Kilve TA5 1SQ

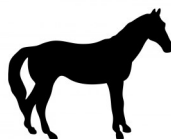
Kelvin Henson

Painter and Decorator

Internal and External  
Old, new and business premises  
Property Maintenance  
**35 YEARS EXPERIENCE**



01278 732949 07817 641645



## Purple Horse

07760 758 626

**Embroidery, Rug Cleaning & Repairs**

[sales@purplehorse.org](mailto:sales@purplehorse.org)

\*Personalised Embroidery\*

(Teamwear - Workwear - Equestrian)

\*Professional Rug Laundry and Repairs Service\*

\*Free Collections Available\*

\*Drop off at Williton Pet & Equine\*

## Williton Pet & Equine

Unit 11, Roughmoor Enterprise Centre  
Williton TA4 4AT

01984 631508

[www.willitonpetcare.com](http://www.willitonpetcare.com)

Pet \* Smallholder \* Equestrian  
Clothing for Horse & Rider

Local Delivery Available



## RUSSELL H BRYANT

PROPERTY MAINTENANCE & REPAIR  
TO DOMESTIC, AGRICULTURAL &  
EQUINE PROPERTIES  
Inc. PLUMBING REPAIRS ROOFING AND  
PLASTERING

EST 1988

L.C.G.I. & A.C.I.O.B. QUALIFIED  
FREE NO OBLIGATION QUOTES

01278 741054 07787 371741  
email [russellhbryant@yahoo.co.uk](mailto:russellhbryant@yahoo.co.uk)





I have to say, I really enjoy organising Ladies Who Lunch (LWL). We are such a diverse bunch but always have such a good laugh!! Add to that, a wonderful menu provided at such a phenomenal price.... we're so lucky!!

If you would like to join us, just contact me. I send out the menu each month for you to choose and pre-order your lunch ready for the last Thursday of the month.

Our next meals are Thursday 27 October and Thursday 24 November.

Kelly (741149)

[Kelly78stone@hotmail.co.uk](mailto:Kelly78stone@hotmail.co.uk)



It's nearly that time again.....

## HALLOWEEN!!!

I'm collecting names of any Haunted Houses that would be happy for Trick or Treaters to visit this year, as well as the names (and ages), of any witches or wizards that would like to join us! Let me know if you want to get involved!

We'll be walking round the village on Monday 31 October from 7pm!!

Everyone welcome!

Kelly (741149)

[Kelly78stone@hotmail.co.uk](mailto:Kelly78stone@hotmail.co.uk)



### KILVE CURRY NIGHT

By courtesy of, and supplied by

**Kilve's own**

**SPICE BOYS!**

*(Pat Hayward, Barry Jordan, Graham Keating, Dave Lindley, David Tansley, Neil Wellum)*

At Kilve Village Hall

**Friday 11 November 6—8pm**

Eat in or take away   Bar available!

Tickets £6.00 each, purchased on the door



## DANGER ON THE BEACH

At the end of the summer someone found a piece of what looked like military ordnance on Kilve beach. Coastguards identified it as a projectile from a WW2 tank from the range at Lilstock, which was used for training by American troops just before D-Day. It was very corroded, so the military explosive ordnance disposal team needed to examine it in case it was still live. Fortunately, they decided that it was inert, and they removed it for later destruction.

The Coastguards remind everyone to be very careful and not to pick up anything suspicious on the beach. If you find anything that might be dangerous, you should phone 999 and ask for the Coastguard. They recommend using a tracking app such as what3words to make it easier for them to locate the item.

Do be careful!

### COFFEE MORNING

Saturday 15 October  
10am — 12 noon  
Café/Bric-a-brac/Books



**East Quantoxhead Village Hall**

## MARY WEBBER

It is with much sadness that we have to record the death of Mary Webber.

Mary with her late husband was a very longstanding member of our community and although she suffered recently from limited mobility, she was a great stalwart of village life. She will be especially remembered for her enjoyment of bowling, being a keen member of the Kilve Short Mat Bowls Club.

On behalf of the village we extend much sympathy to her family.



## THE HOOD ARMS, KILVE

### Opening Times

#### BAR

Tuesday to Saturday:  
12 noon to 3 pm 6pm till close  
Sunday: 12 noon to 3pm

#### FOOD SERVICE

(Reservations recommended)  
Tuesday to Saturday:  
12 noon to 2pm 6pm to 9pm  
Sunday: 12 noon to 3pm

Closed Mondays

01278 741114

[www.thehoodarms.co.uk](http://www.thehoodarms.co.uk)



## M H KELLAWAY

### Chimney Sweep

Aga & Rayburn Servicing

Wood burners serviced and installed

01278 741572



## Chartered Architect

*Specialising in work to historic properties  
and buildings in sensitive landscape*

ALINA WISNICKA MSc Dip Arch RIBA MSc Building Conservation

Drawings for Planning  
and Listed Building Consent  
Working details and specification  
Building Contract Management

*Friendly and at reasonable rates*



T:01278 741755 m:07870305309 [alina@alinawisnicka.co.uk](mailto:alina@alinawisnicka.co.uk)

## Kilve Stores and Post Office

01278 741214

[www.kilvestores.co.uk](http://www.kilvestores.co.uk)

[mfhirst@hotmail.com](mailto:mfhirst@hotmail.com)

Free, local home delivery service  
Fresh bakery bread delivered daily  
Fruit & veg  
Over 65 different wines in stock  
Flo Gas stockist  
Logs & kindling  
Compost available all year  
Special wine & beer offers  
Brazier Smokeless Coal Stockist

**MONTHLY PREMIER SPECIAL OFFERS  
and MEGA DEALS**

**POST OFFICE - PAY POINT  
NATIONAL LOTTERY**

Newspaper deliveries to Holford & Hill Top



## KILVE STORES OFFICIAL STOCKIST

Pop into Kilve Stores to view our range of Frenchic Furniture Paint.

We stock a wide range of paints from the Original Artisan Range, the Lazy Range, and the Al Fresco Range along with all the sundry items you need including a variety of waxes, finishing coat, Freshneen brushes, stencils, sugar soap and lots more!

**Pop in and have a look  
and join the Frenchic Craze!**

**Contact us on 01278 741214 or 07766 018847  
Facebook: Kilve Stores and Post Office**

## W.W.REFURBISHING

TILING  
SKIMMING  
PAINTING

Call WALDI  
on 07837 918337





## HARVEST SUPPER



East Quantoxhead Village Hall  
 Wednesday 12 October 6.30pm  
 Tickets £10.00 Adult (children free)  
 Tel: 01278 653390 for details



bloomerangflowers1792   
 @bloomerangflowers1 

### Bloomerang Flowers

Flowers for all occasions: Weddings, Funerals,  
 Birthdays, Anniversaries etc!  
 Event decor for hire!

Contact Amy for more information  
 07377470355  
 bloomerangflowers1@gmail.com

## CHANTRY TEA GARDENS



Near Kilve Beach  
 Morning Coffee, Lunches,  
 Afternoon Teas, Home-made Cakes  
 and Ice Creams  
 Nick and Jacqui Dawe  
 01278 741457  
 chantry\_cottage@hotmail.com

## NEIL COBB GENERAL BUILDER

EXTENSIONS  
 BATHROOMS  
 ROOFING  
 KITCHENS  
 BRICKWORK  
 STONE WORK



FREE ESTIMATES  
 01278 425740 07753620961

## KILVE BEACH CLEAN UP

A small group, mainly of Kilve villagers, assembled on Kilve beach on 17 September to undertake a clean-up of the beach area. This event was facilitated by the Marine Conservation Society, so our thanks to Hannah Bester who organised everything, including us volunteers.

Although the beach when viewed looked pretty clear we found over a hundred items of litter including a syringe. There was also a dead conger eel. A detailed breakdown of all of the discovered items is available on the village website along with this short report. You can see the full breakdown at [killevillage.co.uk/News/Kilve Beach Clean – 17 September 2022 – Kilve Parish Council](http://killevillage.co.uk/News/Kilve%20Beach%20Clean%20-%2017%20September%202022%20-%20Kilve%20Parish%20Council)

A big thank you needs to be extended to Dianne, Graham, Jim, Greg, Sheila and Jill from Kilve, Sarah from Glastonbury, plus Hannah and her husband and son for giving up their time to make sure that Kilve beach is now a safer and cleaner place.

In closing, there is now an opportunity for Kilve to organise our own beach clean-up on a regular basis, supported but not attended by the Marine Conservation Society. A volunteer is therefore required to lead this very worthwhile cause. Please contact me if you are interested.

*Steve Collins*



## FORGET-ME-NOT CAFE

Jubilee Rooms (formerly Church Rooms),  
 Castle Street, Stogursey  
**Every other Wednesday 10.30 until 12.00**

### AUTUMN/WINTER DATES

Wednesday 12 October  
 Wednesday 26 October  
 Wednesday 9 November  
 Wednesday 23 November  
 Wednesday 7 November  
 Wednesday 21 December  
 Wednesday 4 January



Forget-Me-Not Cafés provide support, companionship and a warm welcome to those who are recognising issues with their memory, as well as their carers, family, and friends.

We are always happy to welcome new friends to come along for a cuppa and see what we do at the Café.

For more information please contact:

Helen: 07891 547982 [cuttelhelen@gmail.com](mailto:cuttelhelen@gmail.com)  
 Rose: 07507 374234 [rosechalk@icloud.com](mailto:rosechalk@icloud.com)

### ALAN MANCHIP

NICEIC Approved Electrical Contractor  
Domestic Commercial Industrial Agricultural  
Part P Domestic Installer Inspecting and Testing  
Portable appliance testing  
REFRIGERATION and AIR CONDITIONING  
Design Supply Install Maintain  
24 HOUR EMERGENCY CALL OUT

01278 733536

Inwood farm Nether Stowey  
E mail office@alanmanchip.co.uk



### Andy Reeves

#### General Handyman

I work by the hour or by estimates. I have over 16 years experience since retiring from my full time work. I have personal liability insurance and a Henry vacuum to clear up after myself.

07971 874839

andrewree@gmail.com

### ROBIN PARKER TREE SERVICES

All aspects of tree work undertaken  
Felling, dismantling, pruning  
Woodland maintenance  
Garden maintenance  
Hedge trimming  
Logs and firewood for sale

01984 568047



### LAKESIDE CARPENTRY

*Custom ~ Design ~ Build*

**MYLES JONES**

07503 312961

lakesidecarpentry@hotmail.com

ALL ASPECTS OF CARPENTRY & JOINERY  
KITCHENS  
FITTED WARDROBES  
WINDOWS & DOORS  
RENOVATIONS & RESTORATION



### Tracy Wint SOFT FURNISHINGS

Having spent hundreds or even thousands on your decor, why settle for ready made or only a near match when it comes to dressing your beautiful home?

A complete, fast, friendly and personal service with quality second to none... and at a price that will undoubtedly surprise.

For your made to measure curtains, blinds or other soft furnishings simply call an expert.

**TRACY WINT  
SOFT FURNISHINGS**

**01278 732734**

tracywint@btinternet.com

*Roman Blinds a speciality!*



### CHIROPODIST

*Grace Brown*

M Inst CH P Reg no. Ch23926

**FREE CONSULTATIONS**

Nail Cutting & Filing. Hard skin & Thickened Nails  
Corn & Callus Removal. Ingrowing Toe Nails  
Diabetic Foot Care Advice. General Foot Health

**Full Disabled Access**

East Street Cannington TA5 2HJ

01278 651251

www.browns-hairandbeauty.co.uk

### BROWNS Hair & Beauty

Ladies, Gents & Children  
Modern & Friendly Environment  
Gift Vouchers Available  
Full Disabled Access

East Street Cannington TA5 2HJ

**01278 651251**

[www.browns-hairandbeauty.co.uk](http://www.browns-hairandbeauty.co.uk)

## VILLAGE HALL NEWS

We are looking into getting some better signage for the hall to raise awareness of its existence and events that are happening there. Is there anyone in the village with graphic design experience and time who might help us with the design side? Contact Sarah Hayward on [kvh@hayward.uk.net](mailto:kvh@hayward.uk.net). Many thanks!

### 100 Club

The winners for August were:

Alan Keen

Arthur Williams

If you would like to join the club please contact us — the more members the bigger the prize and the funds raised!

**A direct debit form is included on p12.**

### Future events

**Friday 14 October 6—8pm:** Cheese & Wine and photograph competition prize giving (note change of date)

**Friday 21 October 7pm for 7.30pm:** @2K Theatre present *Playing Gooseberry* and *Lockdown in Little Grimley*. See [www.at2ktheatre.co.uk](http://www.at2ktheatre.co.uk). Tickets £12 on the day or £10 in advance, available from Kilve Stores or from [www.ticketsource/at2k-theatre.co.uk](http://www.ticketsource/at2k-theatre.co.uk). Refreshments will be available.

**Saturday 29 October 10:30am:** Coffee Morning (Coffee and Cake)

**Friday 11 November 6—8pm:** Kilve Curry Night Eat-in or take-away. Tickets £6 on the door; bar will be open. Calendars will be on sale!

### Looking ahead

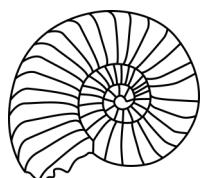
Friday 17 February 7pm: Sweethearts Evening — Song and supper. Details to follow.

Watch this space for Christmas bingo, quiz nights – and if **you** have any ideas or requests, please let us know.

For more information and tickets etc. contact: Claire (01278 741654), or [kvh@hayward.uk.net](mailto:kvh@hayward.uk.net)

To book the hall: [kvhbookings@gmail.com](mailto:kvhbookings@gmail.com) (forms are here: <https://killevillage.uk/about-kilve/village-hall/> )

Sarah Hayward



Don't forget, you can view all the editions of Kilve News plus much more information about the village on the Kilve village website:

**[www.killevillage.co.uk](http://www.killevillage.co.uk)**

## GENTLEMEN'S LUNCH

The next gentlemen's lunch is on Tuesday 4 October at The Hood, at 12.30 for 1pm.

To book, please contact Arthur on 01278 741429 or [Art\\_1948@yahoo.co.uk](mailto:Art_1948@yahoo.co.uk)

## TWENTY FIVE YEARS AGO

*From Issue 104 October 1997*

A group of local children organised a show in the village hall containing "a children's fashion show, two dramas, fancy dress and lots of songs".

Admission price for adults was £2 — children were free.

And the Parish Council was concerned at the continuing number of road accidents involving lorries, particularly at Kilton Cross.

this month  
**25**  
years ago

## The theatre comes to Kilve!

@2K Theatre's autumn production is two one act plays which form part of a six night touring show across West Somerset, visiting new locations such as **Kilve Village Hall on Friday 21 October**. This follows success at previous venues in the area and we have been asked to come to Kilve with our latest show. The two plays complement each other and will be an evening of fun. Refreshments will be available and the show will commence at 7.30pm.

***Playing Gooseberry*** by Kathryn West follows the story of Vernon who grows gooseberries, for competitive purposes. Daphne grows resentment. Old friends and old disagreements surface as gooseberries slowly grow ready for the big competition. But what is more important — Gooseberries or Relationships? And who is really the winner in the end?

*Directed by Jane Burt*

***Lockdown in Little Grimley*** by David Tristram is a new addition to the popular Little Grimley series, which follows the antics of a hapless Amateur Dramatic Society desperate for audiences. In a time of lockdown, Chairman Gordon calls an emergency meeting, complete with social distancing, to discuss his idea for their next production when restrictions ease — a touching love story set in a hospital, with all profits destined for the NHS. But based on their previous efforts, will the NHS actually end up worse off?

*Directed by Nick Gibbons and Daryl Scribbins*





## DIARY DATES

**Wed 12 October 6.30pm** Harvest Supper, EQVH

**Fri 14 October 6—8pm** Cheese & Wine and photograph competition judging and prize-giving, KVH

**Sat 15 October 10—12 noon** Coffee Morning, EQVH

**Tues 18 October 7.30pm** Holford Gardeners Group, Holford VH

**Fri 21 October 7.30pm** Theatre night (see p11), KVH

**Mon 24 October 2pm** Quantock u3a, Stogursey VH

**Mon 31 October 7pm** Halloween walk round village

**Fri 11 November 6—8pm** Curry night — Eat-in or take-away, KVH

## OUR NEXT ISSUE

Our next issue will be for November.

Please send contributions to the Editor (contact details below) or the Village Stores (marked Kilve News).



Please note:

**NO LATER THAN 18 OCTOBER**

If you have reports, adverts or contributions ready before the deadline please let us have them as soon as possible. It really does help having them well in advance of the 18th.

Contact the Editor on 01278 741663  
e-mail jakent@btinternet.com  
or text on 07745 805006

## STANDING ORDER FORM — KILVE VILLAGE HALL 100 CLUB (REGISTERED CHARITY 304569)

PLEASE POST DIRECT TO YOUR BANK OR SET UP VIA ONLINE BANKING USING DETAILS BELOW

To the Bank Manager (name and full address of Bank)

.....  
.....

I/We hereby authorise and request you to debit my/our account

Name ..... Sort code: ..... Account number: .....

Amount (eg £12/£24): ..... Frequency (6 months membership): half yearly on \_\_\_\_ January and \_\_\_\_ July

Beginning Date: ..... End Date: Until further notice ..... Number of Payments: n/a

And Credit Kilve Village Hall Sort Code 60-03-27 Account Number 53248198

Quoting Reference: ..... 100 Club

(e.g. Ann Smith 100 Club if £12 paid for one membership or Ann and Andrew Smith 100 Club if £24 paid for two memberships)

Signed: ..... Name in block capitals: ..... Date: .....

=====

Please detach and hand this section to Claire at Coffee Morning or leave at Kilve Stores marked Kilve VH 100 Club, or in Village Hall post box.

To: Kilve VH 100 Club (c/o Claire Heather)

From: ..... Contact Number: .....

Address: .....  
.....

I have set up a standing order for ONE/TWO/THREE (delete as appropriate) membership(s) of the Kilve VH 100 Club starting in ..... (please insert date of commencement).

I agree to you keeping my details in order that I/we may be contacted regarding my/our membership i.e. notification of prize win.

Signed: ..... Name in block capitals: ..... Date: .....

# **KILVE CRISIS CONTINGENCY PLAN**

## **TRANSPORT**

Following the disruption of Storm Eunice to our village electricity supply for two days back in February it did raise the point of how prepared we are for another similar or crisis event. Although the response to help those who were worst affected was magnificent, could we have been better organised ? With that in mind the Parish Council has started to set up a Crisis Contingency Plan to address issues which might arise from any emergency and to produce an action plan.

One of those issues is **TRANSPORTATION** for villagers, delivery of food and supplies etc, so a questionnaire has been drawn up for those who want to help.

If you would like to help please complete the questionnaire overleaf and return it to:

Brian House, Moonrakers, Hilltop Lane, Kilve TA5 1SR  
Tel. 741384  
email [brian.moonrakers@gmail.com](mailto:brian.moonrakers@gmail.com)

**OR**

Leave it in an envelope at the Village Stores marked for my attention.

**Please return by TUESDAY 1 NOVEMBER 2022**

## TRANSPORTATION QUESTIONNAIRE

1 Do you own a vehicle? Yes No

*If No then you do not need to complete further.*

2 Are you prepared to use it in a “crisis” for any of the following reasons?

A Transporting villagers to a place of safety Yes No

B Delivering food to villagers’ homes Yes No

C Collecting supplies Yes No

D Delivering messages Yes No

3 About your vehicle:

A How many passenger seats does it have? 1 2 3 4

B Is it a four wheel drive? Yes No

C Do you have access to a trailer? Yes No

D Would you be prepared to be contacted during the night if needed? Yes No

You will not be asked to carry unaccompanied children under the age of 14.

Please complete and return:

Name .....

Address .....

.....

.....

Contact tel. no .....

E-mail address (not essential) .....