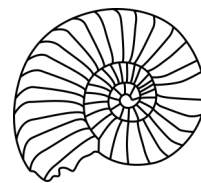


KILVE NEWS



Issue 360

September 2022

EDITORIAL

Mary Grace's article last month stirred memories among a number of residents. Mervyn Coles contacted me to say that he has lived in the same house in Quantock View since 1937, when he was born there. His grandfather moved into the house when it was first built (in the early 1920s, we think), and it has stayed in the family. Norman Pinn sent a piece which appears in this issue, and there is another already waiting for next month. Any more recollections will be very welcome!

Many congratulations to Janet and Mandy, whose cream tea on 6 August raised £525 for charity; details are on p3.

And the fitness equipment has now been installed in the Christopher Robin field by the car park. Having had a quick go on all the machines, I wonder if the defibrillator should be moved across the road?

Jenny

KILVE BEACH CLEAN UP Sat 17 September

Organised by the Marine Conservation Society and the Parish Council: see Diary Dates on back page for registration details.

WELCOME

This month we are pleased to welcome several newcomers to Kilve. Barbara Eminson and David Royle have moved into 12 Millands Lane; Kathryn and Jonathan Cresswell now live in Steephelm, in Pardlestone Lane; and Camilla Desmond and Peter Cox have moved into 2B Quantock View.

We hope you all have a long and happy life in Kilve.

AND FAREWELL to Shane and Julie Hunns, with Freya and Erica, who are moving to East Anglia. We shall miss you all very much, and wish you the best of luck. But where will we now get our pictures framed?

DO YOU KNOW THIS ELEPHANT?

I always thought elephants were supposed to have a good memory. Apparently not.

This elephant visited Oakdene, Rowditch Lane, on Open Gardens Day in early July and forgot to go home.

If you know where home is, please contact Claire Heather on 01278 741654 or 07490 137317.



HISTORIC BUILDING RECORDING

Preserving the historic heritage of the Quantocks



Would you like to help preserve knowledge of historic buildings in and around the Quantock Hills?

The Quantock Hills are home to many historically significant structures and buildings, including not only residential dwellings, but also farm buildings, and old industrial structures such as lime kilns. Often, these important historical structures are in places without public access, and some are at risk of loss through abandonment or development.

The Quantock Landscape Partnership Scheme is now recruiting volunteers to form a small team of dedicated Historic Building Recorders who will help create detailed written, photographic, and drawn records of historic buildings and structures across the LPS area. No experience is necessary as full training will be provided. If you are interested in acquiring new, specialist skills, and making a valuable and lasting contribution to the historic heritage of the area, please do get in touch. We are also keen to hear from anyone who owns a historic building or structure that they would be interested in having recorded as part of the project.

To learn more about the project and express your interest in taking part, please contact the Historic Heritage Officer, Dan Broadbent, at dbroadbent@somerset.gov.uk

To learn more about the Quantock Landscape Partnership Scheme, visit qlps.org.

The photograph shows the lime kiln to be found at Kilve Pill.

Contact the Editor on 01278 741663
e-mail jakent@btinternet.com
or text on 07745 805006

KITCHEN & BATHROOM FEATURES

[Find us on https://www.facebook.com/kandbfeatures](https://www.facebook.com/kandbfeatures)

SUPPLY & FIT OR SUPPLY ONLY

Kitchens, Bathrooms, En-suites, Plumbing
Floor & Wall Tiling and Electrics
Installation to the highest standard.
Fully insured & Free Quotations
Quality, at prices you can afford
Family business with over 30 years' experience.

Home: 01278 651089
Mobile: 07894 140533
Email: ridgmentc@yahoo.co.uk

Kilve's Renowned 'Mr VIKTOR'



Reliable Carpenter
and Odd Job Man
No job too small

Call VIKTOR
ON 07902 327701

DATA CAB TAXIS

Doniford Watchet
4 and 7 seater taxis

We can also offer Executive Airport Transfers

01984 639141



BIDDISCOMBES of BRIDGWATER

Carpets & Furniture

Your local Experts

**BEDS UPHOLSTERY
FURNITURE**

Quality Service Value

01278 422364

www.biddiscombes.co.uk



WEST QUANTOXHEAD MOTORS

For all your motoring needs

SERVICING & M.O.T.

Cars Vans 4x4s Trailers

TYRES A/C DIAGNOSTICS

COURTESY CAR



CALL BEN

for friendly advice & free quotes

01984 632437

or 07799 584700

PARKE PLUMBING AND HEATING

Professional & reliable Plumber

Qualified in oil, gas and LPG

Boiler servicing, installation and breakdown repairs

Bathrooms, radiators & system upgrades

01278 741723

07860 553704

parkeph@gmail.com

Quantock Lodge Pool

Opening times 2022

Sunday 10.30 am to 12.30 pm Family swim

Monday 6.30 to 8.15 pm Lane swim

Tuesday 7.30 to 10 am Adults and toddlers swim

Wednesday 7.30 to 10 am Adults and toddlers

Thursday 7.30 to 10 am Adults and toddlers

Thursday 6.30 to 8.15 pm Lane swim

Quantock Leisure Ltd.

Over Stowey

01278 733375

info@quantocklodge.co.uk



**Jewellery repairs
and designs by
Stephen Howard**

Commissions
Melts and remakes
Stone replacements
Restoration
Rhodium plating
Cleaning
FREE ESTIMATES

f Find me on Facebook

The Goldbeach Studio

East Quantoxhead, by appointment. 07790 467536 | 01278 741570
goldbeach@btinternet.com | www.thegoldbeachstudio.com

FURTHER RECOLLECTIONS OF KILVE

Reading about Mary Grace's early days in Kilve reminded me of my own, in the early 1950s.

As a very keen hill walker, I would often spend Saturday nights at the youth hostel (now *Seven Acres, at the top of Pardlestone Lane*). If there was to be a barn dance in the village hall, a party of us would walk down to join in. The local villagers would always make us feel very welcome.

We were not very good dancers, but we always had a lot of fun trying. It was at one of these dances that I met a very pretty teenager called Margaret.

On Sunday we would often walk down to St Mary's for morning service and afterwards walk back over the hills to Crowcombe and then catch the bus back to Taunton.

Norman Pinn

A WONDERFUL DAY

Wow! What a wonderful day we had hosting our cream tea for charity on a very hot 6 August. We are both overwhelmed with the support, kindness, and donations we received from the village and the surrounding area. The tea raised £525 for cancer research and St. Margaret's Hospice. We would like to thank everyone who helped us to make this event so successful — we couldn't have done it without you.

Janet Bowyer and Mandy Smith



Take part in the World's Biggest Coffee Morning

**Come to The Cider Barn in Kilve
Friday 30 September
9.30am until 1.00pm**

ALL WELCOME

Nick and Nicky Thorne are hosting this coffee morning in aid of Macmillan Cancer Support.

For further information, contact Nicky on
01278 741216 or 07971 884683



WHAT'S IN MY HONEY?

Last year I sent off a sample of honey for DNA analysis, and I recently received the results. The honey comprised 81% sugars, 17% water and 2% other nutrients (eg vitamins, minerals).

The main aim of the analysis was to find out what the bees had been foraging on, and it found the DNA of 23 different species in the sample. I know the bees will have visited more than that, but these were the ones that were common enough to be detected. About 65% was brambles, so the blackberries that you picked last year may well have received a visit from my bees. Bell heather came in at 32%. Other plants visited included brassicas, white clover, borage, gorse, bindweed (now I have an excuse to leave it in the garden!), broad beans, turnips, wild rose, broom, speedwell, red ash, flax, meadowsweet and Chilean myrtle.

You can see that, during the summer nectar flow, the bees really favour certain wild and crop plants.

No spring bloom flowers were found in the sample, but I know that my bees were incredibly busy on the fruit blossom (cherry, apple, etc). All the spring nectar was used to make brood food to feed to the larvae as the colonies built up their numbers. It is the summer bloom that will sustain them through the next winter and end up in the honey. That is why I must make sure to leave them enough honey, or supplement what I take off.

Neil Wellum

KILVE HELP AND INFORMATION

Pat Woolley coordinates an email service keeping residents up to date with information from local organisations (the shop, Hood Arms, Parish Council, Village Hall and so on) and with more personal or ad hoc items (a piano needing a good home, or a planned charity event, for example).

This service is particularly valuable for urgent matters. If you would like to be added to the circulation list, please let Pat have your name, address and email address. Her contact details are:

Pat Woolley, Streamside, 2 Sea Lane, Kilve
01278 741157 pwkilve@yahoo.co.uk



CHRIS GREEN MOWERS

Specialising in repairs and servicing of lawn mowers and other garden machinery.

Suppliers of spares and new machines

A collection and delivery service available

07714 281188

Email chrisgreenmowers@hotmail.co.uk

Wibble Farm, West Quantoxhead

WOODLOUSE CONSERVATION

Recognised specialists in

Lime Rendering

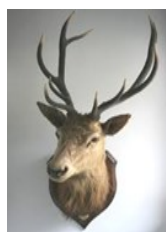
Lime Plastering

Building Restoration
and Conservation Projects



01984 629131 07788 810576

www.woodlouseconservation.co.uk



EXMOOR PLUMBING

Reliable plumber

No job too small

01984 639629

07970 632114

Radiators Cylinders Tanks Ball valves
Bathroom suites Taps Washers Showers
Soil pipes Waste pipes Gutters
Drain clearance

PLUMBING WORK COVERED

Pardlestone Farm

We would love to welcome your friends and family to Pardlestone Farm in Kilve where we offer bed and breakfast and a self-catering cottage – within walking distance of The Hood!



www.pardlestonefarm.co.uk

Please book online or call Mark or Ann on
01278 256629, 07721 763993 or email

enquiries@pardlestonefarm.co.uk

Pardlestone Farm, Pardlestone Lane, Kilve TA5 1SQ

Kelvin Henson

Painter and Decorator

Internal and External

Old, new and business premises

Property Maintenance

35 YEARS EXPERIENCE



01278 732949 07817 641645



Purple Horse

07760 758 626

Embroidery, Rug Cleaning & Repairs

sales@purplehorse.org

Personalised Embroidery

(Teamwear - Workwear - Equestrian)

Professional Rug Laundry and Repairs Service

Free Collections Available

Drop off at Williton Pet & Equine

Williton Pet & Equine

Unit 11, Roughmoor Enterprise Centre
Williton TA4 4AT

01984 631508

www.willitonpetcare.com

Pet * Smallholder * Equestrian

Clothing for Horse & Rider

Local Delivery Available



RUSSELL H BRYANT

PROPERTY MAINTENANCE & REPAIR
TO DOMESTIC, AGRICULTURAL &
EQUINE PROPERTIES
Inc. PLUMBING REPAIRS ROOFING AND
PLASTERING

EST 1988

L.C.G.I. & A.C.I.O.B. QUALIFIED

FREE NO OBLIGATION QUOTES

01278 741054 07787 371741

email russellhbryant@yahoo.co.uk



I have to say, I really enjoy organising Ladies Who Lunch (LWL). We are such a diverse bunch but always have such a good laugh!! Add to that, a wonderful menu provided at such a phenomenal price....we're so lucky!!

If you would like to join us, just contact me. I send out the menu each month for you to choose and pre-order your lunch ready for the last Thursday of the month.

Our next meals are Thursday 29 September and Thursday 27 October.

Kelly (741149)

Kelly78stone@hotmail.co.uk

HARVEST FESTIVAL CELEBRATIONS AT ST MARY'S

Kilve Harvest Songs of Praise will be held at the church at 5pm on Sunday 25 September. By popular request, this will take the same format as the Jubilee Songs of Praise, following tea and cake at 4pm.

Unfortunately, fresh produce cannot be distributed these days, but if anyone would like to send/bring a donation of tinned or dried non-perishable goods, or make a cash donation, these will be forwarded to the local Food Bank after the service. Thank you.

Pam Cuff

WOMEN'S SOFTBALL CRICKET

The newly formed Women's Softball Cricket team held its inaugural inter-club match in the sunshine at Kilve Cricket Club on Friday 29 July. It was a great evening and a fabulous learning experience for the new club members, with the pinks narrowly beating the oranges.



Thanks to everyone who came along to cheer us on and especially to the chaps at KCC for the umpiring, BBQ and bar.

New members and all abilities are always welcome, aged 13 and over. For further information, please call Angela Wilcox on 07967 372164 or visit our Facebook page 'Kilve Cricket Club — Women's Team'.

THE TAUNTON STOP LINE

THE WEST COUNTRY'S LAST LINE OF DEFENCE*

*As Hitler's German forces spread through Europe in the late 1930s, nations across the continent began preparing their own defences. The threat of invasion on home soil seemed unlikely at first but as the Nazi advance continued, by June 1940 a series of 'stop lines' were created across Britain in an effort to delay any invasion.**

Should you follow the line of the River Parrett to/from Langport and the Bristol Channel beyond Burnham on Sea (a level route, ideal for cycling) you could not fail to notice the many brick-built 'pill boxes' on the way. These formed strong defensive positions along the formidable barrier of the river itself ... at both high and low tide!

As noted in the preface reproduced above, this is just a part of one such stop line which stretched from Axmouth on the South Devon coast through Axminster, Chard and Ilminster (this part built along the embankment of the Southern Railway's Chard Junction branch line). Closer to home, the defences made use of the Taunton to Bridgwater canal, merging with the River Parrett near Creech St Michael.

As well as the pill boxes many other buildings remain that were integral to the overall plan. The canal needed to be frequently topped up with water, and a pump house, with its own defensive arrangements, can still be seen at Creech St. Michael.

Viewed most easily from the Combs area on 'our' side of the river, a huge balloon hangar stands out on the flat river edges below Pawlett, like a rusting relic from the industrial era. It housed a barrage balloon — a tethered blimp that would be rolled out, floated high and secured with a wire cable — the aim being to cut the wing off any enemy airplane using the river as a navigation aid searching for the Royal Ordnance Factory (ROF) near Pawlett. A further decoy, of which no trace now remains, was a dummy ROF laid out in the fields near Chedzoy on the other side of Bridgwater.

Altogether a very relevant piece of local history — no longer recent but nevertheless of some considerable interest.

Peter Hares

**The book from which the preface is quoted is titled as above and is available from Amberley Books — last published price, £14.99.*

COFFEE MORNING

Saturday 17 September
10am — 12 noon
Café/Bric-a-brac/Books/DVDs



East Quantoxhead Village Hall



THE HOOD ARMS, KILVE

Opening Times

BAR

Tuesday to Saturday:
12 noon to 3 pm 6pm till close
Sunday: 12 noon to 3pm

FOOD SERVICE

(Reservations recommended)
Tuesday to Saturday:
12 noon to 2pm 6pm to 9pm
Sunday: 12 noon to 3pm

Closed Mondays

01278 741114

www.thehoodarms.co.uk



M H KELLAWAY

Chimney Sweep

Aga & Rayburn Servicing

Wood burners serviced and installed

01278 741572



Chartered Architect

*Specialising in work to historic properties
and buildings in sensitive landscape*

ALINA WISNICKA MSc Dip Arch RIBA MSc Building Conservation

Drawings for Planning
and Listed Building Consent
Working details and specification
Building Contract Management

Friendly and at reasonable rates



T:01278 741755 m:07870305309 alina@alinawisnicka.co.uk

Kilve Stores and Post Office

01278 741214

www.kilvestores.co.uk

mfhirst@hotmail.com

Free, local home delivery service
Fresh bakery bread delivered daily
Fruit & veg
Over 65 different wines in stock
Flo Gas stockist
Logs & kindling
Compost available all year
Special wine & beer offers
Brazier Smokeless Coal Stockist

**MONTHLY PREMIER SPECIAL OFFERS
and MEGA DEALS**

**POST OFFICE - PAY POINT
NATIONAL LOTTERY**

Newspaper deliveries to Holford & Hill Top



KILVE STORES OFFICIAL STOCKIST

Pop into Kilve Stores to view our range of Frenchic Furniture Paint.

We stock a wide range of paints from the Original Artisan Range, the Lazy Range, and the Al Fresco Range along with all the sundry items you need including a variety of waxes, finishing coat, Freshneen brushes, stencils, sugar soap and lots more!

**Pop in and have a look
and join the Frenchic Craze!**

**Contact us on 01278 741214 or 07766 018847
Facebook: Kilve Stores and Post Office**

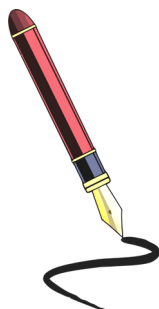
W.W.REFURBISHING

TILING
SKIMMING
PAINTING

Call WALDI
on 07837 918337



WRITING FOR FUN



Would anyone fancy joining me in a new writing group? Just writing for enjoyment once a month, probably in the cooler months of the year from October to April. Who knows, it could inspire your first novel!

Please email me if you're interested:
gillian.l.parsons@gmail.com.

Gill Parsons

NOT AGAIN...!

Sadly, dog fouling appears to be on the increase again.

It is particularly noticeable in Sea Lane, the track up by Park House, and the permissive path from the car park to Winrush; it is also becoming more evident in Hilltop Lane.

It doesn't take much effort to act responsibly and considerately. Nobody should need to be reminded by a sign like this one outside the Village Hall.



PLEASE —

BAG IT AND BIN IT.

CHANTRY TEA GARDENS



Near Kilve Beach

Morning Coffee, Lunches,
Afternoon Teas, Home-made Cakes
and Ice Creams

Nick and Jacqui Dawe

01278 741457

chantry_cottage@hotmail.com

NEIL COBB GENERAL BUILDER

EXTENSIONS
BATHROOMS
ROOFING
KITCHENS
BRICKWORK
STONE WORK



FREE ESTIMATES

01278 425740 07753620961

HOLFORD GARDENERS GROUP

Glorious weather on 6 August brought many visitors to our 16th annual Flower Show. The floral exhibit numbers were slightly less than in 2021 but that's hardly surprising after the past dry months. The Art and Craft classes were well supported and showcased a wonderful selection of local talent. The 'Overall Winner of the Show' was Ailsa Robbins with Mike Copleston as runner-up. Cream teas at Glen Close rounded off an enjoyable afternoon.

For Group membership details call 01278 741173.

Our next meeting:

Tuesday 20 September at 7.30pm

'Fragrant Beauties' a talk by Caradoc Doy

Members £1.00 Visitors £2.00

All Welcome

Holford and District Village Hall



FORGET-ME-NOT CAFE

Jubilee Rooms (formerly Church Rooms),
Castle Street, Stogursey

Every other Wednesday 10.30 until 12.00

RECENT EVENTS

We enjoyed our summer trip to Doniford Farm Park with a bus provided by Nick & Jim from Somerset Passenger Solutions. It was a day full of fun and laughter. The trip wouldn't have been possible without the support from Somerset Passenger Solutions and Hinkley Point C. Our entire group would like to say a big THANK YOU to them both, and to our wonderful helpers. We hope to have another outing soon.

We look forward to welcoming the Strummers of Stogursey Ukulele Group again soon.

LATE SUMMER / AUTUMN DATES

Wednesday 14 September
Wednesday 28 September
Wednesday 12 October
Wednesday 26 October
Wednesday 9 November
Wednesday 23 November

Forget-Me-Not Cafés provide support, companionship and a warm welcome to those who are recognising issues with their memory, as well as their carers, family, and friends.

We are always happy to welcome new friends to come along for a cuppa and see what we do at the Café.

For more information please contact:

Helen: 07891 547982 cuttellhelen@gmail.com

Rose: 07507 374234 rosechalk@icloud.com

ALAN MANCHIP

NICEIC Approved Electrical Contractor
Domestic Commercial Industrial Agricultural
Part P Domestic Installer Inspecting and Testing
Portable appliance testing
REFRIGERATION and AIR CONDITIONING
Design Supply Install Maintain
24 HOUR EMERGENCY CALL OUT

01278 733536

Inwood farm Nether Stowey
E mail office@alanmanchip.co.uk



Andy Reeves

General Handyman

I work by the hour or by estimates. I have over 16 years experience since retiring from my full time work. I have personal liability insurance and a Henry vacuum to clear up after myself.

07971 874839

andrewree@gmail.com

ROBIN PARKER TREE SERVICES

All aspects of tree work undertaken
Felling, dismantling, pruning
Woodland maintenance
Garden maintenance
Hedge trimming
Logs and firewood for sale

01984 568047



LAKESIDE CARPENTRY

Custom ~ Design ~ Build

MYLES JONES

07503 312961

lakesidecarpentry@hotmail.com

ALL ASPECTS OF CARPENTRY & JOINERY
KITCHENS
FITTED WARDROBES
WINDOWS & DOORS
RENOVATIONS & RESTORATION



Tracy Wint SOFT FURNISHINGS

Having spent hundreds or even thousands on your decor, why settle for ready made or only a near match when it comes to dressing your beautiful home?

A complete, fast, friendly and personal service with quality second to none... and at a price that will undoubtedly surprise.

For your made to measure curtains, blinds or other soft furnishings simply call an expert.

**TRACY WINT
SOFT FURNISHINGS
01278 732734**

tracywint@btinternet.com

Roman Blinds a speciality!



CHIROPODIST

Grace Brown

M Inst CH P Reg no. Ch23926

FREE CONSULTATIONS

Nail Cutting & Filing. Hard skin & Thickened Nails
Corn & Callus Removal. Ingrowing Toe Nails
Diabetic Foot Care Advice. General Foot Health

Full Disabled Access

East Street Cannington TA5 2HJ

01278 651251

www.browns-hairandbeauty.co.uk

BROWNS Hair & Beauty

Ladies, Gents & Children
Modern & Friendly Environment
Gift Vouchers Available
Full Disabled Access

East Street Cannington TA5 2HJ

01278 651251

www.browns-hairandbeauty.co.uk

VILLAGE HALL NEWS

We have great news — Sheila Collins has joined the Village Hall Committee as Treasurer and Trustee. We would again like to thank Ailsa for all her past work and the next effort required to transfer everything over to Sheila, and we look forward to working with Sheila as she gets to grips with all things Village Hall finance!

100 Club

The winners for July were:

- 1st Dave Lindley
2nd Robbie Rutt

If you would like to join the club please contact us — the more members the bigger the prize and the funds raised!

Things to look forward to

Friday 14 October 6—8pm Cheese & Wine and photograph competition prize giving. (Note new date)

Friday 21 October 7.30pm Visiting theatre company — see box on right for details. Tickets from the shop or Committee members.

Friday 11 November 6—8pm Curry night — Eat-in or take-away. £6 tickets from 1 October from Kilve Stores or any committee member; bar will be open. Calendars will be on sale!

Bingo in December (date to be confirmed)

Take Art next year (date to be confirmed)

Reminder: 2023 Kilve Calendar Scenes and characters of Kilve Photograph Competition

Closing date for submission is Saturday 1 October.

Photographs (non-returnable) in envelopes labelled *Calendar Competition* to Village Hall Post Box, Village Stores, or any member of the Committee, with your name and contact details on the reverse — by submitting the photograph you agree to publication by the village hall. Please keep a digital copy for publication in the event of winning a place in the calendar.

Judging will be by village members at the Annual Cheese and Wine evening on Friday 14 October.

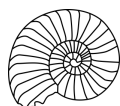
Calendars will be for sale from mid-November; pre-orders would be much appreciated

Watch this space for quiz nights, songs and supper night and more. And if you have any ideas or requests, please let us know.

For more information and tickets etc, contact: Claire (01278 741654), or kvh@hayward.uk.net

To book the hall: kvhbookings@gmail.com (forms are here: <https://kilvevillage.uk/about-kilve/village-hall/>)

Sarah Hayward



The theatre comes to Kilve!



@2K Theatre's autumn production is two one act plays which form part of a six night touring show across West Somerset, visiting new locations such as **Kilve Village Hall on Friday 21 October**. This follows success at previous venues in the area and we have been asked to come to Kilve with our latest show. The two plays complement each other and will be an evening of fun. Refreshments will be available and the show will commence at 7.30pm.

Playing Gooseberry by Kathryn West follows the story of Vernon who grows gooseberries, for competitive purposes. Daphne grows resentment. Old friends and old disagreements surface as gooseberries slowly grow ready for the big competition. But what is more important — Gooseberries or Relationships? And who is really the winner in the end?

Directed by Jane Burt

Lockdown in Little Grimley by David Tristram is a new addition to the popular Little Grimley series, which follows the antics of a hapless Amateur Dramatic Society desperate for audiences. In a time of lockdown, Chairman Gordon calls an emergency meeting, complete with social distancing, to discuss his idea for their next production when restrictions ease — a touching love story set in a hospital, with all profits destined for the NHS. But based on their previous efforts, will the NHS actually end up worse off?

Directed by Nick Gibbons and Daryl Scribbins

GENTLEMEN'S LUNCH

The next gentlemen's lunch is on Tuesday 6 September at The Hood, at 12.30 for 1pm.

To book, please contact Arthur on 01278 741429 or Art_1948@yahoo.co.uk

The Stoggymen return!

East Quantoxhead Village Hall

Saturday 10 September 7.30pm

Tickets £10.00 to include Ploughmans

Raffle — BYOB

Tel: 01278 741241 for details

DIARY DATES

- Sat 3 September 2pm** Cricket Match Kilve CC v The Villagers, Beach Ground
- Tues 6 September 12.30pm** Gentlemen's Lunch, Hood Arms
- Sat 17 September** Kilve Beach Clean Up; register at <https://www.mcsuk.org/beach-cleans/mcs-kilve-great-british-beach-clean-17-09-2022/>
- Sat 24 September 10:30am** Coffee Morning (Coffee and Cake), KVH
- Mon 26 September 2pm** Quantock u3a, Holford VH
- Mon 26 September 7pm** Short Mat Bowls restarts, KVH
- Thurs 29 September 12 noon** Ladies Who Lunch, Hood Arms
- Fri 30 September 9.30am—1pm** Coffee morning in aid of Macmillan Cancer Support, The Cider Barn, Kilve
- Fri 14 October 6—8pm** Cheese & Wine and photograph competition judging and prize-giving, KVH NB new date
- Fri 21 October 7.30pm** Theatre night (see p9), KVH
- Fri 11 November 6—8pm** Curry night — Eat-in or take-away, KVH

SHORT MAT BOWLS IS BACK

The new season will start on

Monday 26 September

at 7pm

Kilve Village Hall

New members are very welcome. If you are interested, please contact Robbie on 01278 741594 for details.

OUR NEXT ISSUE

Our next issue will be for October.

Please send contributions to the Editor (contact details on page 1) or the Village Stores (marked Kilve News).

Please note:

NO LATER THAN 18 SEPTEMBER

If you have reports, adverts or contributions ready before the deadline please let us have them as soon as possible. It really does help having them well in advance of the 18th.



*'Haunted houses,
Curdling screams,
Freezing bats, torn at the seams!*

*Full white moon,
Dripping candles,
Roaming forgetful zombie vandals!*

*Gnarled old trees,
Tossed in the breeze
Cold ghosts shivering, knocking their knees!*

*Trick and treating,
From door to door,
Not enough sweets, I MUST HAVE MORE!!!*

It's nearly that time again.....

HALLOWEEN!!!



I'm collecting names of any Haunted Houses that would be happy for Trick or Treaters to visit this year, as well as the names (and ages), of any witches or wizards that would like to join us! Let me know if you want to get involved!

We'll be walking round the village on Monday 31 October from 7pm!!

Everyone welcome!

Kelly (741149)

Kelly78stone@hotmail.co.uk

