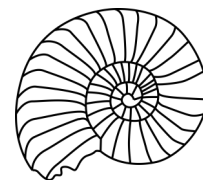

KILVE NEWS



Issue 359

August 2022

EDITORIAL

You may notice a slight change in appearance this month, with a new typeface for most items. This is Constantia, and I think it is slightly clearer than the previous Times New Roman. Do let me know whether you agree.

I was tempted to combine the July and August issues of Kilve News, but in the end decided not to. Perhaps that was as well, because you have responded brilliantly to my request for contributions last month — thank you!

I gather that luckily no fights broke out over whether cream or jam should go on first at the afternoon tea in aid of the Air Ambulance. It would have been unfortunate if an event to support the service had ended up calling on it. A final question—have you heard of The Spice Boys?

Jenny

Contact the Editor on 01278 741663

e-mail jakent@btinternet.com

or text on 07745 805006

WANTED URGENTLY

A Treasurer for the Kilve Village Hall Committee

The Committee, as trustees of this historical and vital village building, meet once a month. The job is not onerous but is essential to keep our beautiful Village Hall economically viable.

If you are interested, please contact Elizabeth Grigg for further information: 01278741645 or 07765 994013

AN EXCITING MATCH

On 17 July Kilve CC played VRA Amsterdam at the Beach Ground. We agreed to play a 40 over game and invited the tourists to bat first. They scored quickly in the sunshine but the Kilve bowlers kept chipping away and eventually bowled them out for 219. You will be pleased to hear that one former international was playing but was bowled by 16-year-old Tom Sherburn for 37.

Kilve's run chase started well with Dan Sefton and Andy Coulthard putting on 48 together. After a few wickets fell, Carl Clemenson and Jim Taylor took up the mantle and put on 70 runs for the 4th wicket stand. Jim was recognised as Kilve's player of the match by the opposition and awarded a cap from their captain. Eventually, our run chase fell just short as we finished on 194-5 after our 40 overs.

A really lovely day in the sunshine with a good game of cricket played in just the right spirit. Hopefully, more international friendlies can follow.

Pete Stone



ARTS, CRAFTS AND GARDENS

The Arts and Crafts and Open Gardens event on 2 July, put on by the Kilve Village Hall committee, was, despite the appalling weather, a successful day.

There were nine gardens open, all very different: from the more ordered and colourful to the less formal and wilder, which included walks through fields and woods and took in the glorious views towards the Bristol Channel and the Quantocks.

The Arts and Crafts on display in the Village Hall were exceptional and showed the enormous talent of the people who exhibited their work. There were seven very varied exhibits, some with items for sale and some just for people to view. There was a steady flow of villagers and non-villagers viewing and buying paintings, craft and pet essentials, and commissioning further art and craft from exhibitors.

Teas, coffees and delicious cakes were on sale and a very welcome bar was opened as soon as the clock struck midday!

Elizabeth Grigg

THANK YOU

A message from Phyllis Lemon

Thank you all for your lovely birthday cards, and thank you, Pat, for the beautiful cake.

Also thank you to all who came and sang with Alison and Bruce. What a treat you all gave me! The flowers were all beautiful, too.

I'm sorry I missed thanking you all last month, but I really appreciate everything that you all did.

Phyllis

KITCHEN & BATHROOM FEATURES

Find us on <https://www.facebook.com/kandbfeatures>

SUPPLY & FIT OR SUPPLY ONLY

Kitchens, Bathrooms, En-suites, Plumbing
Floor & Wall Tiling and Electrics
Installation to the highest standard.
Fully insured & Free Quotations
Quality, at prices you can afford
Family business with over 30 years' experience.

Home: 01278 651089
Mobile: 07894 140533
Email: ridgmentc@yahoo.co.uk

Kilve's Renowned 'Mr VIKTOR'



Reliable Carpenter
and Odd Job Man
No job too small

Call VIKTOR
ON 07902 327701

DATA CAB TAXIS

Doniford Watchet
4 and 7 seater taxis

We can also offer Executive Airport Transfers

01984 639141



BIDDISCOMBES of BRIDGWATER

Carpets & Furniture

Your local Experts

**BEDS UPHOLSTERY
FURNITURE**

Quality Service Value

01278 422364

www.biddiscombes.co.uk



WEST QUANTOXHEAD MOTORS

For all your motoring needs

SERVICING & M.O.T.

Cars Vans 4x4s Trailers

TYRES A/C DIAGNOSTICS

COURTESY CAR



CALL BEN

for friendly advice & free quotes

01984 632437

or 07799 584700

PARKE PLUMBING AND HEATING

Professional & reliable Plumber

Qualified in oil, gas and LPG

Boiler servicing, installation and breakdown repairs

Bathrooms, radiators & system upgrades

01278 741723

07860 553704

parkeph@gmail.com

Quantock Lodge Pool

Opening times 2022

Sunday 10.30 am to 12.30 pm Family swim

Monday 6.30 to 8.15 pm Lane swim

Tuesday 7.30 to 10 am Adults and toddlers swim

Wednesday 7.30 to 10 am Adults and toddlers

Thursday 7.30 to 10 am Adults and toddlers

Thursday 6.30 to 8.15 pm Lane swim

Quantock Leisure Ltd.

Over Stowey

01278 733375

info@quantocklodge.co.uk



**Jewellery repairs
and designs by
Stephen Howard**

Commissions
Melts and remakes
Stone replacements
Restoration
Rhodium plating
Cleaning
FREE ESTIMATES

[Find me on Facebook](#)

The Goldbeach Studio

East Quantoxhead, by appointment. 07790 467536 | 01278 741570
goldbeach@btinternet.com | www.thegoldbeachstudio.com

RECOLLECTIONS OF KILVE

from Mary Grace

I first visited Kilve in the summer of 1954. We cycled a lot, and my friend suggested coming to Kilve from Over Stowey. The A39 was then very safe for cyclists. I met my husband-to-be that day. He lived with his parents at the Old Thatched Cottage (*now Old Thatch, in Sea Lane*). That, and many of the houses in the village, were owned by the East Quantoxhead Estate.

When we married in 1959, we lived with my in-laws for a short time. Although the house had electricity, my mother-in-law cooked on an oil stove which had two burners, one with an oven over it. She also used a primus stove and had a safe to keep meat in. There was no bathroom or indoor sanitation, a tin bath hung outside the back door. No flush toilet, that was a shed in the garden.

We moved to Church Cottage South in the early 1960s. Still no bathroom, but we had a flush toilet outside. My two younger children were born there. The large farmhouse beside the priory was converted to two cottages during our time there. When we moved from Church Cottages, they were sold to people from Southampton, who kept them mainly as holiday lets.

Most homes had open fireplaces, often with tiles around them, which kept the coalman from Nether Stowey busy. Washing machines were mostly twin-tubs. To my knowledge, there were not many fitted kitchens then, but kitchen cabinets were quite common, with room for storage, and a flap to pull out for rolling out pastry.

The school bus collected the children from beside the pond outside Meadow House (*now Old Rectory House*), as several children from the village attended the local school, which was just past Winrush on the way to East Quantoxhead. There were two teachers, and a local lady prepared and cooked their lunch. I think there were over thirty children when the school closed in 1970.

In 1964, we moved to Parkhouse Cottage. In those days, everything was delivered. Our milkman came whistling each morning, our papers were delivered, even Sundays, a butcher came from Nether Stowey twice a week, and International Stores every Saturday. We also had a delivery from the local bakery and a greengrocer. We rented a TV set.

The village shop and post office was opposite the bakery, in what is now The Old Post Office. It was quite a small shop, owned by Mr Barker senior. Where the shop is now was a guest house. When Mr Barker retired, his son had the guest house converted to the shop we have today.

At the top of Sea Lane, where Little Orchard garage and the post box stand, were two cottages. My husband's grandmother lived in one. The front entrance was down two steps from the main road. After a heavy downpour one winter, the rain ran in from the front and out the back door. In the late 1960s Little Orchard was a tearoom for several years.

The owner of Aldenham House kept cows in the field where our bungalows (*Old Ham*) are now. Millands Lane at that time was mainly two fields and about three or four houses. The local children played in the fields.

We had a good local football team and won many cups. Mrs Stevens, who was landlady of the Hood Arms, enjoyed travelling to support them whenever possible, and if it was a cup match, would fill the cup with port and lemon on returning.

Our local doctor had a surgery at Holford. If anyone in the village needed medical assistance, a lady from Quantock View was often in demand, because she had Red Cross training, so all cuts and minor injuries were dealt with promptly. We had our own village policeman, who lived at Hilltop. The vicarage (*now The Old Rectory*) was in the village, beside the telephone box. We used the public phone a lot at that time as not everyone had their own.

As very few people had their own transport, the buses were used a lot – Streets Buses when I first came to Kilve, and then Western National. One resident organised coach trips for the villagers, which were very popular. The motor bus, which is shown in many photographs, was run by the Aplin family. When I first came to Kilve, Miss Aplin lived in a large farmhouse on the right just before Hunts Lane. But a fire razed the farmhouse to the ground during the seventies. Miss Aplin had the bungalow at the top of Hunts Lane built, and she lived there for the remainder of her life.

Thank you very much for this, Mary. I found it fascinating, and wonder if any other long-term residents also have memories that they would like to share.

Jenny

HOLFORD GARDENERS GROUP FLOWER SHOW



Saturday 6 August

2 — 4.15pm

Holford and District Village Hall

**Look out for
The Spice Boys!
They're on their way!**



CHRIS GREEN MOWERS

Specialising in repairs and servicing of lawn mowers and other garden machinery.

Suppliers of spares and new machines
A collection and delivery service available

07714 281188

Email chrisgreenmowers@hotmail.co.uk
Wibble Farm, West Quantoxhead

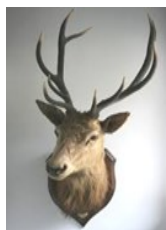
WOODLOUSE CONSERVATION

Recognised specialists in
Lime Rendering
Lime Plastering
Building Restoration
and Conservation Projects



01984 629131 07788 810576

www.woodlouseconservation.co.uk



EXMOOR PLUMBING

Reliable plumber
No job too small

01984 639629

07970 632114

Radiators Cylinders Tanks Ball valves
Bathroom suites Taps Washers Showers
Soil pipes Waste pipes Gutters
Drain clearance

PLUMBING WORK COVERED

Pardlestone Farm

We would love to welcome your friends and family to Pardlestone Farm in Kilve where we offer bed and breakfast and a self-catering cottage – within walking distance of The Hood!



www.pardlestonefarm.co.uk

Please book online or call Mark or Ann on
01278 256629, 07721 763993 or email

enquiries@pardlestonefarm.co.uk

Pardlestone Farm, Pardlestone Lane, Kilve TA5 1SQ

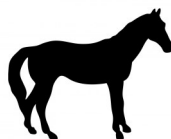
Kelvin Henson

Painter and Decorator

Internal and External
Old, new and business premises
Property Maintenance
35 YEARS EXPERIENCE



01278 732949 07817 641645



Purple Horse

07760 758 626

Embroidery, Rug Cleaning & Repairs

sales@purplehorse.org

Personalised Embroidery

(Teamwear - Workwear - Equestrian)

Professional Rug Laundry and Repairs Service

Free Collections Available

Drop off at Williton Pet & Equine

Williton Pet & Equine

Unit 11, Roughmoor Enterprise Centre
Williton TA4 4AT

01984 631508

www.willitonpetcare.com

Pet * Smallholder * Equestrian
Clothing for Horse & Rider

Local Delivery Available



RUSSELL H BRYANT

PROPERTY MAINTENANCE & REPAIR
TO DOMESTIC, AGRICULTURAL &
EQUINE PROPERTIES
Inc. PLUMBING REPAIRS ROOFING AND
PLASTERING

EST 1988

L.C.G.I. & A.C.I.O.B. QUALIFIED
FREE NO OBLIGATION QUOTES

01278 741054 07787 371741
email russellhbryant@yahoo.co.uk



The next meals will be on Thursday 28 July and Thursday 25 August at 12.00 for 12.30pm.

The menu provided by The Hood is always amazing and at such a fabulous price too!!

If you are interested in joining us, please let me know.

Kelly (741149)

Kelly78stone@hotmail.co.uk



CREAM TEA SUCCESS

The cream tea organised in aid of the Air Ambulance on 12 July was very successful even though the numbers were low due to a variety of reasons (mostly Covid related). Several people had a takeaway delivered.

The event raised £223 for the Air Ambulance which included some generous donations.

WHAT IS A VILLAGE AGENT?

From Izzy Sylvester

The Village Agent service is part of the Community Council for Somerset (CCS). It offers free, confidential, practical support to anyone in need, including community groups. CCS Village Agents are local, problem-solving solution finders. There are over 60 Village Agents all over Somerset.

Sounds interesting but WHO can they help?

A Village Agent can help if...

- You are an unpaid carer or looking after someone else informally and need a little help & support – for you and the person you care for.
- You are struggling with a problem, big or small, but don't know where to turn.
- You are feeling lonely and isolated.
- You are part of a community with a collective problem and need a kick-start to solve.

It doesn't matter how big or small the problem is, CCS Village Agents are here to help.

If you receive help from Adult Social Care, you may be referred to a CCS Community Agent, who works directly with referrals from the ASC team. They are very similar to a Village Agent but may have different experiences and knowledge in specific areas, such as mental health or learning difficulties. All CCS Agents work closely with local GP surgeries and the Adult Social Care team, so a person has well-rounded, co-ordinated support.

OK that's great – but HOW exactly can a Village Agent help?

It's probably easier to list the things Agents CAN'T do!

It's very difficult to pin down exactly how a Village Agent can help, as each person's situation is unique. In short, they can help make life better with the right connections, and practical community-based solutions. Here are a few recent examples of how they have helped people:

- Supported clients to access transport so that they can

attend medical appointments.

- Arranged with the local food bank to supply food to individuals, families, couples.
- Sourced & arranged delivery of white goods, furniture & household items to people in need.
- Made sure that the clients are supported to get the financial help they need.
- Arranged translations for clients who don't speak fluent English but need our support.
- Supported people who need help collecting prescriptions.
- Conducted welfare calls on behalf of local GP's to ensure clients are safe and well.
- Gave emotional support to people who are feeling isolated and lonely.
- Supported people (particularly unpaid carers) with brokering a Micro-Provider. This is specialist paid-for support - from personal care to cleaning - whatever your need is, a Micro-Provider can help with daily living tasks.
- Supported elderly Somerset residents to 'survive winter' by making sure that they had sufficient heating and cooking facilities, and distributed Surviving Winter grants.
- Gifted refurbished mobiles to people who are cut off from their family & friends.
- Helped people to get home from hospital or temporary accommodation.
- Found & made connections between clients & the right community-based support.

If you think your local CCS Village Agent could help you in any way, please call either Izzy or Ruth:

Izzy (07931 0180455) or email izzy@somersetccc.org.uk

Ruth (07947 901240) or email Ruthw@somersetccc.org.uk

Our main helpline is 01823 331 222 or visit

www.somersetagents.org/agent-call-back and request a call back.



THE HOOD ARMS, KILVE

Opening Times

BAR

Tuesday to Saturday:
12 noon to 3 pm 6pm till close
Sunday: 12 noon to 3pm

FOOD SERVICE

(Reservations recommended)
Tuesday to Saturday:
12 noon to 2pm 6pm to 9pm
Sunday: 12 noon to 3pm

Closed Mondays

01278 741114

www.thehoodarms.co.uk



M H KELLAWAY

Chimney Sweep

Aga & Rayburn Servicing

Wood burners serviced and installed

01278 741572



Chartered Architect

*Specialising in work to historic properties
and buildings in sensitive landscape*

ALINA WISNICKA MSc Dip Arch RIBA MSc Building Conservation

Drawings for Planning
and Listed Building Consent
Working details and specification
Building Contract Management

Friendly and at reasonable rates



T:01278 741755 m:07870305309 alina@alinawisnicka.co.uk

Kilve Stores and Post Office

01278 741214

www.kilvestores.co.uk

mfhirst@hotmail.com

Free, local home delivery service
Fresh bakery bread delivered daily
Fruit & veg
Over 65 different wines in stock
Flo Gas stockist
Logs & kindling
Compost available all year
Special wine & beer offers
Brazier Smokeless Coal Stockist

**MONTHLY PREMIER SPECIAL OFFERS
and MEGA DEALS**

**POST OFFICE - PAY POINT
NATIONAL LOTTERY**

Newspaper deliveries to Holford & Hill Top



KILVE STORES OFFICIAL STOCKIST

Pop into Kilve Stores to view our range of Frenchic Furniture Paint.

We stock a wide range of paints from the Original Artisan Range, the Lazy Range, and the Al Fresco Range along with all the sundry items you need including a variety of waxes, finishing coat, Freshneen brushes, stencils, sugar soap and lots more!

**Pop in and have a look
and join the Frenchic Craze!**

**Contact us on 01278 741214 or 07766 018847
Facebook: Kilve Stores and Post Office**

W.W.REFURBISHING

TILING
SKIMMING
PAINTING

Call WALDI
on 07837 918337



GENTLEMEN'S LUNCH

The next gentlemen's lunch is on Tuesday 9 August at The Hood, at 12.30 for 1pm. (NB Not the first Tuesday this time, by popular request.)

To book, please contact Arthur on 01278 741429 or Art_1948@yahoo.co.uk

NOW SCREENING...

Did you know that we have a new local cinema? I was recently dragged to the Avenue Cinema in Minehead to see the new Top Gun film. I have to admit that I enjoyed the film more than I expected to, though I was disappointed that it didn't feature Berlin's beautiful song *Take My Breath Away*, which was apparently composed specifically for use in the original film.

You can book tickets on-line and collect them when you arrive. Tickets are a flat £4.00 no matter where you sit or what time you go. And the seats are very comfortable. You can buy drinks and sweets when you go in, but a member of the staff comes round with ice-creams just before the main feature. (I'm not sure whether you would call her an usherette nowadays.)

The cinema has three screens, so there is always a choice of film. It's possible that I will be the one doing the dragging next time.

Jenny

CHANNY TEA GARDENS



Near Kilve Beach

Morning Coffee, Lunches,
Afternoon Teas, Home-made Cakes
and Ice Creams

Nick and Jacqui Dawe

01278 741457

chantry_cottage@hotmail.com

NEIL COBB GENERAL BUILDER

EXTENSIONS
BATHROOMS
ROOFING
KITCHENS
BRICKWORK
STONE WORK

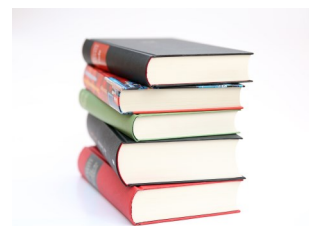


FREE ESTIMATES

01278 425740 07753620961

KILVE READING GROUP

The book chosen for the July meeting was *A Necessary Evil* written by Abir Mukherjee. It was our "favourite" genre — a Whodunit — but set in 1920s India. The hero, a British policeman, and his Indian Sergeant provided an



interesting insight into the British Raj and involved maharajas, maharanis, princes, harems, concubines, eunuchs et al. The purdah car was a fascinating concept. It was a tale full of historical detail of the time with many references to some of the Hindu deities.

The story itself was described by one member of the Group as a "rollicking good yarn". The majority of the Group enjoyed it and all agreed it was an easy read, which is always nice to have in the summer when the garden calls! The author himself proved to be an interesting man brought up in Glasgow by his Indian parents. Naturally, he was curious as to his cultural heritage and thus became an author! He portrays the differences in the two cultures in the novel in a very amusing and seemingly accurate manner. The writing was very descriptive and drew the reader in to the wonderful rich, atmosphere of India. All in all a very enjoyable book.

We also enjoyed our Summer Supper at this meeting. The food was excellent and very friendly service — thank you The Hood staff. It was a good meeting and we now have a summer break until September.

Sue Hares



Table Tennis

Holford and District Village Hall

Thursdays 7.30 - 9pm

New members welcome to join us.

Please just turn up or contact the Secretary, Andrew Mew,
01278 741437 for further information.

Equipment provided

Members £2 per session - Non-Members £3

ALAN MANCHIP

NICEIC Approved Electrical Contractor
Domestic Commercial Industrial Agricultural
Part P Domestic Installer Inspecting and Testing
Portable appliance testing
REFRIGERATION and AIR CONDITIONING
Design Supply Install Maintain
24 HOUR EMERGENCY CALL OUT

01278 733536

Inwood farm Nether Stowey
E mail office@alanmanchip.co.uk



Andy Reeves

General Handyman

I work by the hour or by estimates. I have over 16 years experience since retiring from my full time work. I have personal liability insurance and a Henry vacuum to clear up after myself.

07971 874839

andrewree@gmail.com

ROBIN PARKER TREE SERVICES

All aspects of tree work undertaken
Felling, dismantling, pruning
Woodland maintenance
Garden maintenance
Hedge trimming
Logs and firewood for sale

01984 568047



LAKESIDE CARPENTRY

Custom ~ Design ~ Build

MYLES JONES

07503 312961

lakesidecarpentry@hotmail.com

ALL ASPECTS OF CARPENTRY & JOINERY
KITCHENS
FITTED WARDROBES
WINDOWS & DOORS
RENOVATIONS & RESTORATION



Tracy Wint SOFT FURNISHINGS

Having spent hundreds or even thousands on your decor, why settle for ready made or only a near match when it comes to dressing your beautiful home?

A complete, fast, friendly and personal service with quality second to none... and at a price that will undoubtedly surprise.

For your made to measure curtains, blinds or other soft furnishings simply call an expert.

**TRACY WINT
SOFT FURNISHINGS
01278 732734**

tracywint@btinternet.com

Roman Blinds a speciality!



CHIROPODIST

Grace Brown

M Inst CH P Reg no. Ch23926

FREE CONSULTATIONS

Nail Cutting & Filing. Hard skin & Thickened Nails
Corn & Callus Removal. Ingrowing Toe Nails
Diabetic Foot Care Advice. General Foot Health

Full Disabled Access

East Street Cannington TA5 2HJ

01278 651251

www.browns-hairandbeauty.co.uk

BROWNS Hair & Beauty

Ladies, Gents & Children
Modern & Friendly Environment
Gift Vouchers Available
Full Disabled Access

East Street Cannington TA5 2HJ

01278 651251

www.browns-hairandbeauty.co.uk

VILLAGE HALL NEWS

from Sarah Hayward

Sadly Ailsa has resigned from the committee and as a trustee. She will be much missed and we would like to thank her for all her hard work over the years for the hall, especially during the difficult times of the lockdowns. She has kindly offered to hold the fort on book-keeping for now.

We therefore need a new trustee and treasurer — please get in touch with Elizabeth Grigg if you are interested.

100 Club

The winners for June were:

1st Sarah Hayward

2nd Debbie Stanway

If you would like to join the club please contact us — the more members the bigger the prize and the funds raised! The second 6 month tranche starts this month.

Reminder: 2023 Kilve Calendar Scenes and characters of Kilve Photograph Competition

Closing date for submission Saturday 1 October

Photographs (non-returnable) in envelopes labelled Calendar Competition to Village Hall Post Box, Village Stores, or any member of the Committee, name and contact details on reverse — by submitting the photograph you agree to publication by the village hall. Please keep a digital copy for publication in the event of winning a place in the calendar.

Judging will be by village members at the Annual Cheese and Wine evening on Friday 7 October.

Calendars will be for sale from the end of October; pre-orders would be much appreciated.

Curry Evening

Saturday 11 November, 6.00 pm — 9.00 pm

Curries prepared and cooked by six local SPICE BOYS. £6.00 to include portion of curry, rice and nan bread. EAT IN OR TAKE OUT!!

Bar available with local ales and good wine!!

Come and support your local Village Hall.

Tickets will be available from Saturday 1 October and can be purchased from the shop or a committee member.

Watch this space for more activities — quiz nights, Christmas party, theatre visit, Take Art events, bingo — and if **you** have any ideas or requests, please let us know.

For more information and tickets etc. contact: Claire (01278 741654), or kvh@hayward.uk.net

To book the hall: kvhbookings@gmail.com (forms are here: <https://kilvevillage.uk/about-kilve/village-hall/>)

CHARITY CREAM TEA

Saturday 6 August, 2 — 5pm

2A Quantock View

Cream teas — Cake sale — Raffle

In aid of cancer research and St Margaret's Hospice

For more details, contact Janet Bowyer
on 07784 946813

FUND RAISING FOR ST.MARY'S

After an absence of two years, the annual Gin Tasting evening received a very good measure of support when it was held on 16 July.

St. Mary's PCC would like to extend a very big thank you to all who supported the event, and the very generous people of Kilve who very kindly donated auction and raffle prizes.

We are truly pleased to tell everyone that the evening resulted in some much needed funds for St. Mary's to the tune of £865.

Robbie



FORGET-ME-NOT CAFE

Jubilee Rooms (formerly Church Rooms),
Castle Street, Stogursey

Every other Wednesday 10.30 until 12.00

SUMMER DATES

Wed 3 August

Wed 17 August

Wed 31 August

Forget-Me-Not Cafés provide support, companionship and a warm welcome to those who are recognising issues with their memory, as well as their carers, family, and friends.

All are welcome to come along for a cuppa and a friendly chat.

For more information please contact:

Helen: 01278 734818 cuttelhelen@gmail.com

Rose: 07507 374234 rosechalk@icloud.com

DIARY DATES

Mon 25 July 2pm Quantock u3a, KVH

Thurs 28 July 12 noon Ladies Who Lunch, Hood Arms

Sat 30 July 10:30am Coffee Morning (Coffee and Cake), KVH

Sat 6 August 2 — 5pm Charity Cream Tea, 2A Quantock View

Tues 9 August 12.30pm Gentlemen's lunch, Hood Arms

Sat 20 August 10:30am Coffee Morning (Coffee and Cake), KVH
NB NOT the last Saturday due to Bank Holiday

Thurs 25 August 12 noon Ladies Who Lunch, Hood Arms

Sun 4 September 1.00pm Cricket Match Kilve CC v The Villagers, Beach
 Ground **NB rescheduled from 28 August**

Sat 24 September 10:30am Coffee Morning (Coffee and Cake), KVH

Fri 7 October 6 — 8pm Cheese & Wine and photograph competition
 judging and prize-giving, KVH

OUR NEXT ISSUE

Our next issue will be for September.

Please send contributions to the Editor (contact details on page 1) or the Village Stores (marked Kilve News).



Please note:

NO LATER THAN 18 AUGUST

If you have reports, adverts or contributions ready before the deadline please let us have them as soon as possible. It really does help having them well in advance of the 18th.

Neighbourhood Watch

Kilve Neighbourhood Watch is actively supported by the Avon and Somerset Police and by Kilve Parish Council in promoting and actively improving personal safety, security and crime prevention. In addition, we work with other voluntary organisations: public and private sector bodies concerned with reducing crime and anti-social behaviour, and improving the safety, well-being, security and resilience of communities and the general public.

Kilve Neighbourhood Watch aims to provide information and co-ordination in support of a safe and secure environment for individuals and the community. Your

safety and security, and that of your friends, family, colleagues and the community, depend on:

- Receiving up-to-date information and advice on issues of safety and security
- Implementing advice on safety, security and crime prevention
- Reporting crime and issues that affect your safety and security and that of others

If you would like to join the Kilve Neighbourhood Watch scheme, please complete the form below and leave it at the shop in a sealed envelope addressed to Dr Elizabeth Grigg. The email circulation list is kept confidential.

Kilve Neighbourhood Watch scheme registration details

I wish to be a member of the Kilve Neighbourhood Watch (KNW) scheme and consent for my details to be used for KNW purposes. My details are below.

Title/Name _____

Address _____

Post code _____

Email address _____

Telephone number (optional) _____

Mobile _____

Signature _____ Date _____