



KILVE NEWS



Issue 342

January/February 2021



EDITORIAL

2020—what a year!

I can't imagine any of us thinking back in January 2020 that it would be such an eventful year. The Coronavirus pandemic brought heartache, trauma, untold problems for health and mental well-being, not forgetting the ultimate tragedy of losing loved ones. Yet, for all of the horrific moments that we have all so readily seen, one of the most memorable moments of the year for me will be having witnessed the kindness, generosity and out pouring of love by so many of you here in Kilve. I am not going to 'single out' any particular kindness but so many of you have ensured that neighbours and friends have not been forgotten and that their every need has been catered for. Glimmers of hope on the horizon, with a vaccination programme under way, and here's hoping that in the not too distant future, we might just be able to have a big village celebration to welcome in 'better times'.

On behalf of all of us here at Kilve News I extend to you,
your family and friends

**'Very best wishes for Good Health,
Peace and Happiness in 2021.'**

Robbie

Contact the Editor on 01278 741594
or e-mail at davidandrobbie@talktalk.net

You will be receiving this issue a little later than anticipated as our good friends at Kilve Court were closed over the Christmas period. However it does give me the opportunity to place on record my humble thanks for all they have done to enable the printing of Kilve News over the last nine months. Without the kindness of Sharon, Director Daniel and the rest of his staff we would not have been able to continue.



WELCOME!

This month it is a pleasure to welcome Paula, Andy and their lovely dog Twiglet, who have moved in to 'Steep Holm' at the top of Pardlestone Lane.

We hope very much that you have a long and happy stay in Kilve.

(We have a long and happy tradition of welcoming new residents to our village but alas on some occasions, a few 'slip through the net'. If you have a new neighbour at anytime please be kind enough to let the Editor know so that we can include 'a welcome' in our columns).



GREETINGS

Our deadline was passed for inclusion on the Christmas Greeting page in our last issue, but we are most pleased to add this extra greeting:-

To all neighbours and friends,

Best wishes for a Very Happy and Peaceful New Year

Ween, Alan and Poppy Pincot



Ali Davison decided he would try to cycle 2000 miles during 2020. His rides were mainly from Kilve to Minehead and Kilve to Porlock. He completed his 2000 miles at the beginning of December and was presented with a certificate and commemorative mug in recognition of his fantastic achievement. Since then he has continued his rides and just lately he rode up Porlock Hill which has a gradient of 1 in 4!

Well done Ali.

KILVE VILLAGE WEBSITE

www.killevillage.co.uk



KITCHEN & BATHROOM FEATURES

Find us on <https://www.facebook.com/kandbfeatures>

SUPPLY & FIT OR SUPPLY ONLY

Kitchens, Bathrooms, En-suites, Plumbing
Floor & Wall Tiling and Electrics
Installation to the highest standard.
Fully insured & Free Quotations
Quality, at prices you can afford
Family business with over 30 years experience.
Home: 01278 651089
Mobile: 07894140533
Email: ridgmontc@yahoo.co.uk

Kilve's 'Renowned' 'Mr VIKTOR'

Reliable Carpenter
and 'Odd Job' Man
No job too small



Call VIKTOR
ON 07902327701

DATA CAB TAXIS

Doniford Watchet

4 and 7 seater taxis

16 seater Mini Bus

We can also offer

Executive Airport

Transfers

01984 639141



The Goldbeach Studio



Stephen Howard
Jewellery Repairer & Designer

#4AllYourJewelleryNeeds



East Quantoxhead Somerset TA5 1EL
01278 741570 07790467536

WEST QUANTOXHEAD MOTORS

For all your motoring
needs

SERVICING M.O.T.

Cars, Vans 4x4s Trailers

TYRES A/C DIAGNOSTICS

COURTESY CAR

CALL BEN

for friendly advice & free quotes



BIDDISCOMBES of BRIDGWATER

Carpets & Furniture

Your local Experts

BEDS UPHOLSTERY

FURNITURE

Quality Service Value

Tel:- 01278 422364

www.biddiscombes.co.uk



Quantock Lodge Pool

Opening times 2019

Sunday 10.30 to 12.30 pm Family Swim

Monday 6.30 to 8.30 pm Lanes Swim

Tuesday 7.45 to 10.15 am Adult Swim

Thursday 7.45 to 10. am Adult Swim

6.30 to 8.15 pm Lanes Swim

Quantock Leisure Ltd.

Over Stowey

01278 733375

info@quantocklodge.co.uk



PARKE PLUMBING AND HEATING

Professional & reliable Plumber

Qualified in oil, gas and LPG

Boiler servicing, installation and
breakdown repairs

Bathrooms, radiators & system upgrades

01278 741723

07860 553704

parkeph@gmail.com

In our December issue, I was asked if we could include a few words to encourage, those who are able, to help 'Light up Kilve for Christmas'. The response was quite outstanding, so I 'sent' David and 'ace-cameraman', Trevor Stanton, off around the village to capture on film some of the many wonderful decorations which certainly 'lit up' our village.





CHRIS GREEN MOWERS

Specialising in repairs and servicing of lawn mowers and other garden machinery.

Suppliers of spares and new machines
A collection and delivery service available

Tel: 07714 281188

Email chrisgreenmowers@hotmail.co.uk
Wibble Farm, West Quantoxhead

WOODLOUSE CONSERVATION

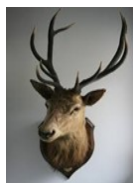
Recognised specialists in
Lime Rendering,

Lime Plastering
Building Restoration
and Conservation Projects

01984 629131

07788 810576

www.woodlouseconservation.co.uk



EXMOOR PLUMBING

Reliable plumber

No job to small

01984639629

07970632114

Radiators Cylinders

Tanks Ball valves

Bathroom Suites Taps Washers

Showers

Soil Pipes Waste Pipes Gutters

Drain Clearance

PLUMBING WORK COVERED



Pardlestone Farm

We would love to welcome your friends and family to Pardlestone Farm in Kilve where we offer bed and breakfast and a self-catering cottage – within walking distance of The Hood!

www.pardlestonefarm.co.uk

Please book online or call Mark or Ann on 01278 256629, 07721 763993 or email enquiries@pardlestonefarm.co.uk

Kelvin Henson
Painter and Decorator
Internal and External
Old, new and business premises
Property Maintenance
'35 YEARS EXPERIENCE'



Tel:-
01278 732727
Mobile
07817 641645

Purple Horse

07760 758 626

Embroidery * Rug
Cleaning * Repairs
sales@purplehorse.org



Personalised Embroidery
(Teamwear - Workwear - Equestrian)

Professional Rug Laundry and Repairs Service

Free Collections Available

Drop off at Williton Pet Equine

Williton Pet & Equine

Unit 11,
Roughmoor Enterprise Centre
Williton TA4 4AT
01984 631 508

www.willitonpetcare.com

Pet * Smallholder * Equestrian
Clothing for Horse & Rider
Local Delivery Available



RUSSELL H BRYANT

PROPERTY MAINTENANCE & REPAIR
TO DOMESTIC, AGRICULTURAL &
EQUINE PROPERTIES
Inc. PLUMBING REPAIRS ROOFING AND
PLASTERING

EST 1988

L.C.G.I. & A.C.I.O.B. QUALIFIED
FREE NO OBLIGATION QUOTES

01278 741054

Mobile 07787371741

email russellhbryant@yahoo.co.uk

Somerset Micro Providers

Not many people may know of the army of registered professional self employed people that can offer care and support within your home. Since 2015 self employed care workers have signed up to the community catalysts programme, founded by Somerset County Council. The programme which supports people in their own homes, enabling hundreds of people to remain in their familiar surroundings. The scheme has proved successful as now the membership has grown to over 360 micro providers, working across Somerset today. What makes this level of help different is micro providers can offer a friendly one to one level of affordable care, tailored to customer's needs. The micro provider can plan their work rota so that they can meet the times that customers want them to arrive., having a familiar friendly face, has also benefited customers and has taken the stress out of getting the professional care that they need. Micro providers are local to their area and can support each other when cover is needed for sickness or holiday leave. In order for micro provider to join the accredited scheme they have to be DBS Checked, have appropriate training, relevant insurance, and policies and procedures for their services. What do we do ? anything and everything to enable someone to stay at home. We can be cleaners, carers, dog walkers, and gardeners. There is a full list of micro providers on the Somerset County Council web site and also your local Village Agent knows who works in your area.

For any more information on Micro Providers across West Somerset please contact - Vicki James on 07475803652 16 Coastguard Cottages .Lilstock Somerset TA5 1SU



2021 CENSUS

Census day 2021 is March 21st. By taking part and encouraging others to do the same , you'll make sure that the community gets the services it needs. In our next issue of Kilve News we will be able to give you more details and in the meantime up to date information may be found on the internet at :-

www.census.gov.uk

DO YOU BELIEVE IN ANGELS?

This picture should prove the point beyond doubt.!

We managed to 'capture' Marlene Payne who heads up the Quantock Food Bank, and presented her with a bouquet of flowers from the village of Kilve as a token of our appreciation for the tremendous hard work she undertakes to ensure that all the donated food parcels go out to needy families in our area.

The village has been generous beyond belief in their donations and we hope that all of you can take comfort in the knowledge that you have brought a little seasonal cheer to many families who would otherwise have been without.

The following couple of months will continue to be very demanding for the Food Bank. May we remind you all that donations may be left at the Village Stores and that I am most willing to collect if asked. (Robbie 741594)



Kilve Stores News – from Charlotte

(not Matt!)

Some exciting news from me this time rather than Matt!

Over the last few months, I have started to upcycle old furniture which I have bought very cheap from junk shops, online, charity shops etc.

I discovered a range of paints called 'Frenchic', perfect for furniture restoration along with all the other general household painting tasks.

The range is suitable for beginners or seasoned professional DIY experts. The great thing about this furniture paint is, how quick and easy it is to apply and the range of colours and finishes you can achieve.

It's also toxin, solvent free, no nasty chemicals added, virtually no odour whatsoever and the coverage and depth of colour is amazing. This paint can be even be applied to PVC doors and windows to bring them back to life and it's so toxic free it can be used in a babies nursery!!

The 'Frenchic' range has been featured in lots of places including, 'The Telegraph', 'Good Housekeeping Magazine', 'Grand Designs', and even 'Escape to the Chateaux' a very popular TV programme.

'Frenchic' paint is really hot property at the moment and I am excited to announce that **Kilve Stores** will be a stockist of all 'Frenchic' paint along with their range of paint brushes, finishing waxes, stencils and lots more.

If you love to upcycle old furniture, or you are looking for some inspiration for a room in your house, please visit the 'Frenchic' website www.frenchicpaint.co.uk and read all about the fantastic range of products on offer and watch some demonstrations on how to use and the end results.

As we will be the only supplier of 'Frenchic' paint and between Taunton and Minehead and with Kilve Stores being advertised on the Frenchic website and Facebook pages, we are expecting our first delivery of stock to sell exceptionally quickly, so we are advertising to our regular, local customers first.

Please feel free to have a chat to me (Charlotte) about the paints and keep an eye out in-store for the arrival of the paint that's gripping the nation at the moment.

Thanks very much

Charlotte

Frenchic
Furniture Paint®

Kilve Stores and Post Office

**Traditional Premium House Coal
& Bright Flame Smokeless Coal at
Low discounted prices!**

**Cheapest supplier in the area
Free delivery**

**Special Wine and Beer offers
Monthly MEGA deals!**

**National Lottery Newspa-
pers Magazines
Logs and kindling**



01278 741214

ALAN MANCHIP

NICEIC Approved Electrical Contractor
Domestic Commercial Industrial Agricultural
Part P Domestic Installer Inspecting and Testing
Portable appliance testing

REFRIGERATION and AIR CONDITIONING

Design Supply Install Maintain

24 HOUR EMERGENCY

CALL OUT

01278 733536

Inwood farm Nether Stowey
E mail office@alanmanchip.co.uk

**GOUDE GARDENING**

Hedges, Lawns & Tree Care
Weeding & Planting
Garden Clearance

Call Paul on

01984 631899

07804 828193

goudegardening@yahoo.com



LOCAL HARDWOOD LOGS
DELIVERED

£70 PER CUBIC METRE

TO ORDER OR MORE

INFORMATION

CALL

NICK THORNE

741216



NEIL COBB
GENERAL BUILDER
EXTENSIONS

BATHROOMS

ROOFING

KITCHENS

BRICKWORK

STONE WORK

FREE ESTIMATES

TEL 01278 425740

Or Mobile 07753620961

**LAKESIDE CARPENTRY**

Custom - Design—Build

MYLES JONES

07503 312961

lakesidecarpentry@hotmail.com

ALL ASPECTS OF CARPENTRY & JOINERY

KITCHENS

FITTED WARDROBES

WINDOWS & DOORS

RENOVATIONS &

RESTORATION

**ROBIN PARKER
TREE SERVICES**

All aspects of tree work undertaken

Felling, dismantling, pruning.

Woodland maintenance

Garden maintenance

Hedge trimming

Contact us on

01984 568047



BROWNS
Hair & Beauty

Ladies, Gents & Children
Modern & Friendly Environment

Gift Vouchers Available

Full Disabled Access

East Street Cannington TA5

2HJ

01278-651251

www.browns-hairandbeauty.co.uk

CHIROPODIST

Grace Brown

M Inst CH P Reg no. Ch23926

FREE CONSULTATIONS

Nail Cutting & Filing. Hard skin & Thickened Nails

Corn & Callus Removal. Ingrowing Toe Nails

Diabetic Foot Care Advice. General Foot Health

Full Disabled Access

East Street Cannington TA5 2HJ

01278 651251

www.browns-hairandbeauty.co.uk

HONEYBEE DIARIES from Neil Wellum

It takes about 50,000 honeybee flights to make a pound of honey. Incredible! A queen honeybee can lay up to 2,000 eggs a day at the height of the breeding season. Incredible!



A queen can determine whether to lay an egg that will produce a female bee or a male bee. Incredible! I'm over halfway through my second year of keeping bees and 'incredible' seems to be the most fitting word to describe these amazing creatures. After I retired four years ago, I knew that I wanted to try and keep honeybees because they fascinated me so much. Also, I am very fond of honey. So, in spring 2019 I attended an introductory course run by the Exmoor Beekeepers Association – a bit of theory and as much practical training as you liked. After that I brought my first bee colony home in a hive in July, just too late for a honey crop. My first challenge was to get them through the winter in as strong and healthy a condition as I could. They did get through, and then with a bit of drama, some luck and a little input from me, that colony is now three colonies and I'm going to try and get all three through this winter and stay at that level.

Winter is a critical time for the bees. They can starve, get diseases and the damp is more of a killer than the cold. Roughly 20% of bee colonies in the UK are lost in the winter. This is often attributed to the weather, but the arrival of a pest with the apt name *Varroa destructor*, from Asia in the early 1990s, is a major culprit. Before it arrived, winter losses in the UK were about 5%. *Varroa* is a little brown mite that feeds on the blood and fatty tissue of the bee, but it is the viruses it transmits which weaken the bees and can cause problems. I'm sure, given time, honeybees will evolve to cope with them. Until then, beekeepers can help. Fighting varroa is a multi-stage procedure throughout the year with two key stages: in August, after honey extraction and in mid-winter, when the queen takes a break from laying eggs. A few days ago, I carried out the mid-winter treatment and vaporised the inside of the hives with oxalic acid. This doesn't bother the bees, but the varroa certainly don't like it.

You also have to make sure the bees have enough honey to get them through the winter. A healthy colony in August, say 50,000 bees, will need approximately 40lbs of honey for the winter months. By mid-winter, the number of bees in the hive will be down to something like 10,000. The bees don't hibernate, but they do go into a cluster. This keeps the cluster's internal temperature at about 26C and this can rise to 35C when the queen starts laying again. The worker bees take turns on the outside of the cluster, where it is coldest, much like male Emperor penguins in Antarctica when they are protecting the young chicks. The last job of the year is to give each colony a Christmas present in the form of some bakers' icing fondant, to make sure they don't go hungry. No tinsel or crackers, though!

All insect pollinators are vitally important to us; arguably the honeybee is man's best friend. Our greengrocery shelves would be very depleted without their good work. In the UK, some 70 crops rely upon insect pollination, not to mention many of our wild flowers and trees.

Sadly, across the world, insect numbers are in decline. A combination of the usual factors – climate change, pesticides, fertilisers, insect diseases and habitat loss – have led to this, but we have become more aware in recent years and with that awareness things can improve.

Continued in the next column>>>>>

In some countries people carry out the pollination themselves, due to the dearth of insects. In South-west China you will see people up apple trees doing just that. Can you imagine? Then, in the vast almond orchards of California, the farmers have to bring in millions of honeybees by the lorry load to pollinate the almond trees. After the bees have done their good work, the farmers have to ship them out again because there are no other flowers there to keep the bees alive. Plant biodiversity is best.

You don't need to keep bees to help. We can all do little things, whether or not you are a keen gardener. I'm old enough to remember playing in lovely flower meadows as a child, and we need to restore those vital habitats. If you walked around the village and the fields this summer, you would have seen examples of this happening. The little flower meadow behind the Church was a vision of beauty, as was the area just to the south of East Wood. The rich and diverse hedgerows round here are something to be proud of too. The honeybee absolutely loves brambles, hawthorn, blackthorn, wild cotoneaster, ivy and many more.

Through January and February I will be keeping an eye on the colonies as the winter weather does its worst and making sure they have enough food. I will also be making up new comb frames in preparation for the first big hive inspections of the year, probably in March, where a health check of the bees will be the priority.

(Thank you, very much, Neil. A most interesting article which I am sure will interest many of our readers. We look forward to your next contribution in our next issue. :Editor)



**EXMOOR
HEATING
FUELS**

01643 706099

www.exmoorheatingfuels.co.uk

**Excellent and reliable local service based
in Minehead**

M H KELLAWAY

**Chimney Sweep
Aga & Rayburn
Servicing
Wood Burners**



**serviced and installed
01278 741572**

TWENTY FIVE YEARS AGO

From Issue 87 January 1996
It was announced that 'The Hood Arms' had changed hands in the middle of December. A 'chap called Robbie' had, after 17 1/2 years sold the business to a Barry and Vanessa Eason who were welcomed to the village. There was also a significant change to the look of Kilve Stores as the proprietors, Mike and Chris, had extended the shop floor area to take in what was previously the tea room.



READING GROUP

from Sue Hares

The last meeting of 2020 saw the Group discussing "Here We Are" a novel by Graham Swift. This proved to be rather a disappointing book, although well written with nice language. The most interesting part appeared to be the back story of the evacuee, one of the three main characters. It was not a book we would recommend to our friends, although it was a Booker prize winner. Obviously they are easier to please than the Kilve Book Group! The Group will continue with meetings on Zoom until such time as "normal" life resumes! Unfortunately, the Group is at full capacity and there is currently a waiting list.



OUR NEXT ISSUE

Our next issue will be for March Contributions for the 343rd edition to Robbie, or the Village Stores (marked Kilve News)



Please note

NO LATER THAN FEBRUARY 15th

If you have reports, adverts or contributions to hand before the deadline please let us have them as soon as possible. It greatly helps having them well in advance of the 15th



A great surprise to everyone when they realised that Santa's reindeer were having the day off when he visited Kilve!

Kilve Golf Society 2020-year end review from Mark Walton

Despite it being a very challenging year for everyone, the society managed to have an enjoyable and competitive third season, in between lockdowns.



The first game at Cannington, was memorable for last years winner Mark Walton, accepting the forfeit of playing with a bag of 1960's golf clubs and the surprise winner of the "Longest Drive" Trevor Stanton, demonstrating the value of accuracy over power. Among the courses played were, Cannington, Minehead, Worlebury, Long Sutton, Wedmore and Oake Manor. At most places we managed bacon rolls and coffee beforehand and meal afterwards, lockdown permitting. Sadly, our two day trip to Devon had to be cancelled. By the time we reached the last fixture, there looked like only one winner barring a "Devon Lock" slip up which didn't happen and Dan Sefton was duly crowned champion of 2020 season sweeping the board and winning every category. That bag of 1960's club and a 4-stroke handicap cut await Dan in 2021!

Dan was not entirely infallible. He did lead his playing group down the wrong fairway at Worlebury, in the driving rain and arrived at Long Sutton in a roll neck jumper and cardigan, it was 25 degrees, so a trip to the club shop was required for suitable summer wear.

The other performance worth noting, was Bruce Eyley's mid-table finish, in his first year of retirement and vindicating the purchase of a new set of golf clubs. Also proving you have "got to be in it to win it".

Whilst writing this review we have just entered Tier 4 lockdown, so our ability to play as a group in 2021, is on hold.

At the first opportunity we will meet to present trophies to Dan and discuss plans for the new season, which will include new venues to visit, competition formats and any other thoughts to make our matches as social as possible. The society has a Mens and Womens section and a wide range of handicaps. We would welcome new members, who may have moved into the village/area this year or found their golf clubs at the back of the garage, during that lockdown clearance purge we all seemed to have had. We meet to play once a month. If you are interested in joining us, please contact Mark Walton tel: 741095 or email mtwalton@btinternet.com.

'LOVE IS IN THE AIR'

Dianne and Graham Keating set up a 'Mistletoe Station' just prior to Christmas when they invited passers by to help themselves to a bunch of mistletoe in return for a donation to the Watchet and Quantock Dementia Group. A total of £53 was donated and this has been forwarded to the Group together with the 'Kilve News Greetings' donations making a grand total of £490.



Chartered Architect

*Specialising in work to historic properties
and buildings in sensitive landscape*

ALINA WISNICKA

MSc Dip Arch RIBA MSc Building Conservation

**Drawings for Planning
and Listed Building Consent
Working details and specification
Building Contract Management
Friendly and at reasonable rates**



T: 01278 741755 m: 07870305309 email: alina@alinawisnicka.co.uk